



Samsung Galaxy Fame S6812i Midframe Replacement

The midframe holds the inner components of the phone together as well as providing a compartment for the battery. We are going to go through the steps of how to successfully replace the midframe.

Written By: Charles



 **TOOLS:**

- [Phillips #00 Screwdriver](#) (1)
 - [iFixit Opening Tools](#) (1)
-

Step 1 — Remove back cover



- Start by removing the back cover by using your thumbnail to pry the cover off the midframe.

Step 2



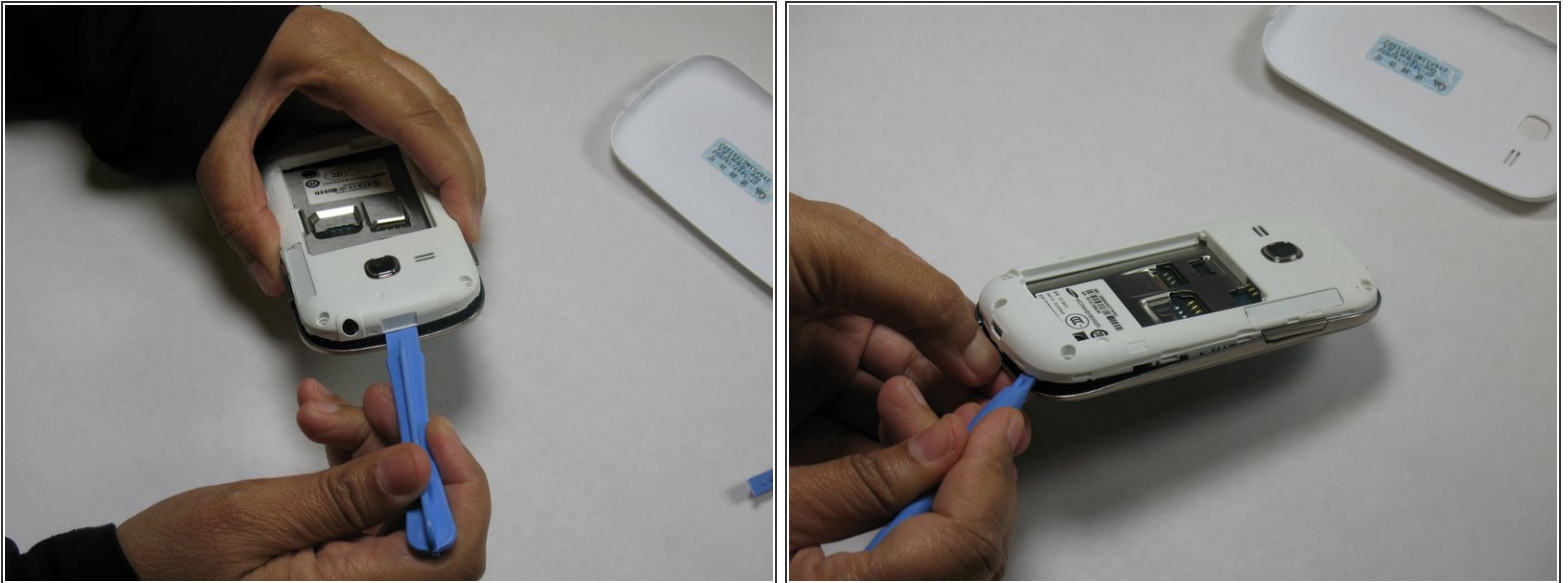
- i** Note: one of the screws is hidden under a plastic sticker.
- Remove the five 4 mm screws with a Phillips#00 screwdriver.

Step 3



- Remove the battery with plastic opening tool

Step 4 — Separating the midframe



- Using the plastic opening tool pry into the bezel to remove the mid-frame
 - Continue moving the plastic opening tool around the mid-frame to separate it from the display assembly.
- ⚠** Be gentle the plastic mounting clips are very fragile. Pay extra attention when working around the volume button.

Step 5 — Final step



- Once you have separated the mid-frame it should look like this.
- Replace the old mid-frame with the new one and follow the steps in reverse.

To reassemble your device, follow these instructions in reverse order.