



Sony Xperia M2 Battery Replacement

Sony Xperia M2 Battery Replacement

Written By: ZFix



INTRODUCTION

If your battery does not hold charge, we will show you how to open the phone and replace the old battery.

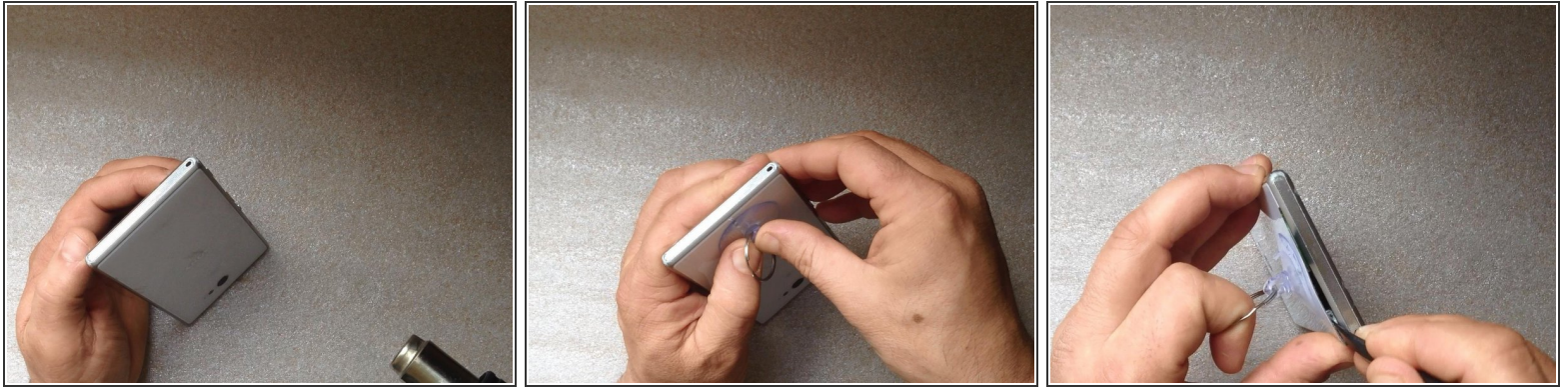
[Please SUBSCRIBE to my channel ツ](#)

[video: http://youtu.be/TpZRy6rl_hc]


TOOLS:

- [iFixit Opening Tools](#) (1)
 - [Suction Handle](#) (1)
 - [Spudger](#) (1)
-

Step 1 — Rear Cover



- Warm the Back Cover. You can use a hairdryer.

 Be careful, the Cover is plastic.

- Use a small suction cup and plastic tools for separating the Rear panel.
- Before installing the new cover, you must clean the phone from the old adhesive tape and install a new one if your spare part has come without double sided adhesive tape.

Step 2 — Battery



- Disconnect the Battery Cable.
- The battery is stuck to the phone frame. Use the white tape to remove it.
- Li-Polymer Battery, 2230 mAh
- Part number: LIS1551ERPC
- [Please SUBSCRIBE to my channel ツ](#)

To reassemble your device, follow these instructions in reverse order.