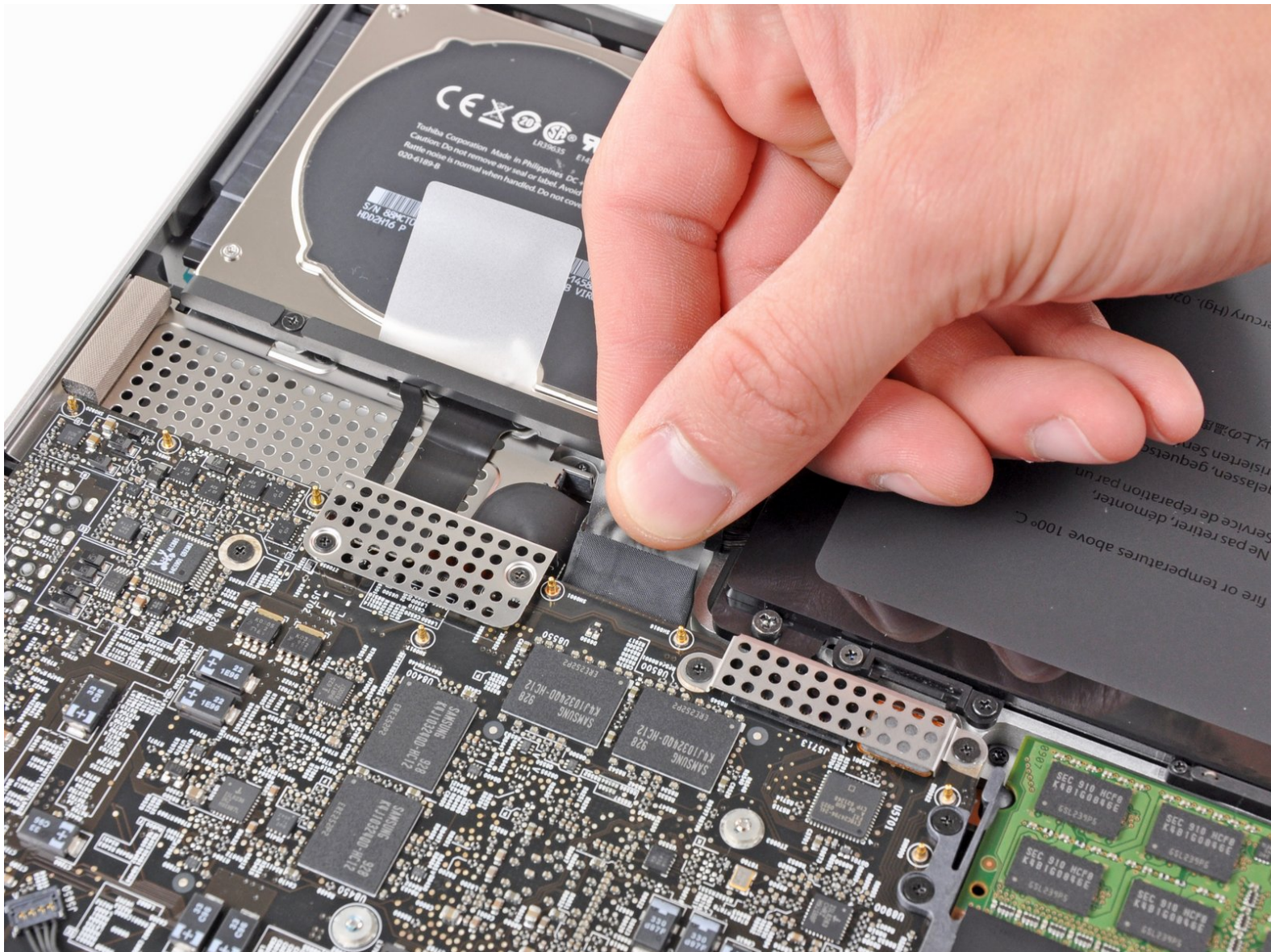




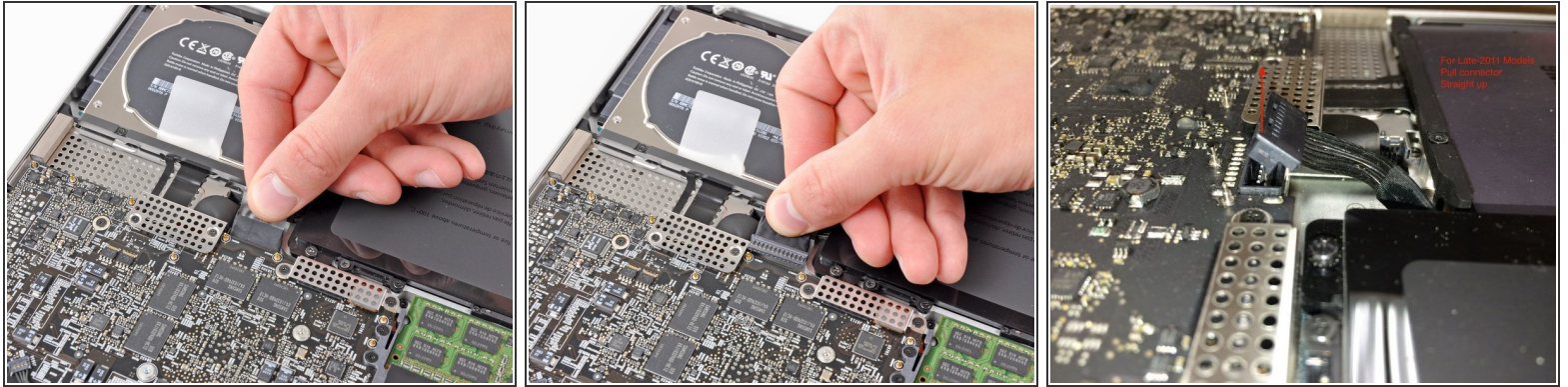
MacBook Pro 17" Unibody Battery Replacement

Disconnecting the battery without removing it.

Written By: Andrew Bookholt



Step 1 — Battery



⚠ Whenever working near the logic board, it is always wise to first disconnect the battery to avoid short circuits.

- If present, grab the plastic tab attached to the battery connector and pull it toward the front edge of the device. For Late-2011 models the battery connector will not have a tab and is simply a plug that inserts straight down into the motherboard--to remove pry the plug straight up.
- ⓘ If the plastic tab is missing, use a spudger to pry the connector up from its socket.
- 👉 Pull the tab parallel to the face of the logic board.

To reassemble your device, follow these instructions in reverse order.