



# Texas Instruments TI-30Xa Battery Replacement

This guide will show, step by step, the battery replacement for the TI-30Xa scientific calculator.

Written By: Chris L



## INTRODUCTION

This guide will show, step by step, the battery replacement for the TI-30Xa scientific calculator.



### TOOLS:

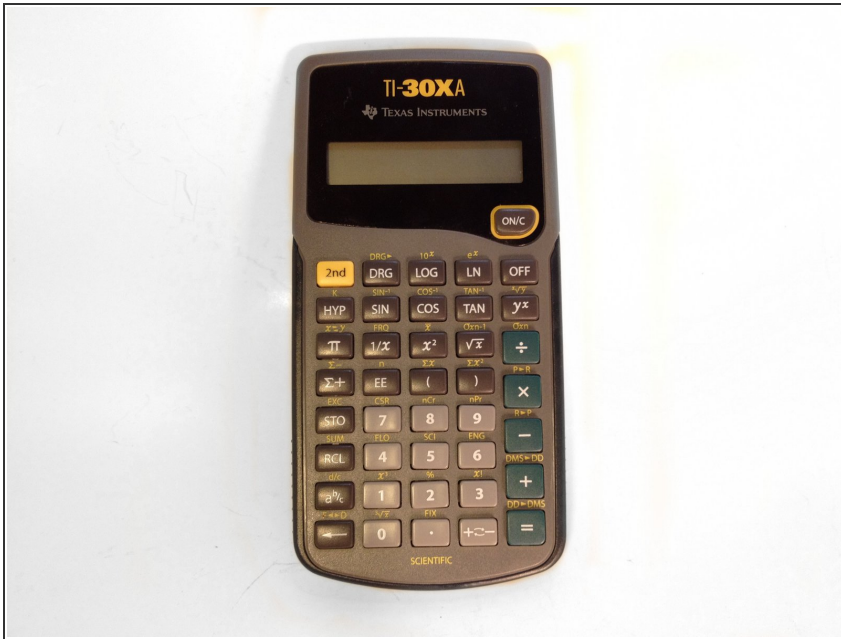
- [Phillips #1 Screwdriver](#) (1)



### PARTS:

- [LR44 \(A-76\) Batteries](#) (1)

## Step 1 — TI-30XA Battery Replacement



- Here's the fully assembled TI-30XA calculator.

## Step 2



- Locate the six screws on the back of the calculator.
- With a Phillips #1 screwdriver, loosen and remove the screws.

## Step 3



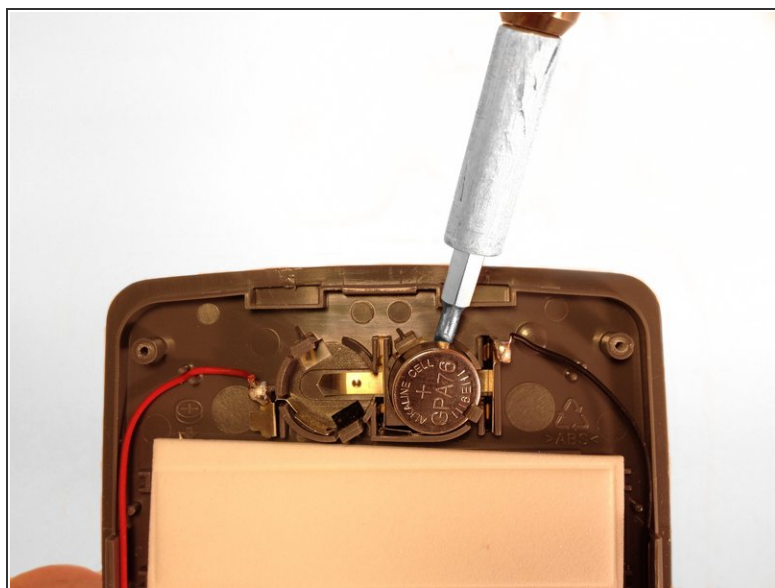
- Find the two notches at the top of the calculator.
  - Insert a flat-head screwdriver into one of the notches and carefully pry open the top end of the case.
  - Locate where the case is still attached at the sides.
  - Insert the flat-head screwdriver into one side where the gap has widened.
  - Now gently pry apart the sides of the case.
- i** Prying only one side will release the other side as well.

## Step 4



- Now separate the two panels from one another.

## Step 5



- The two LR44 batteries are located at the top.
- Slide the flat-head screwdriver underneath each battery and they will easily pop out.

To reassemble your device, follow these instructions in reverse order.