



PowerBook G4 Aluminum 15" 1.5-1.67 GHz Left Ambient Light Sensor Replacement

Written By: iRobot



INTRODUCTION

This detects the light level in the room to adjust the backlit keyboard.



TOOLS:

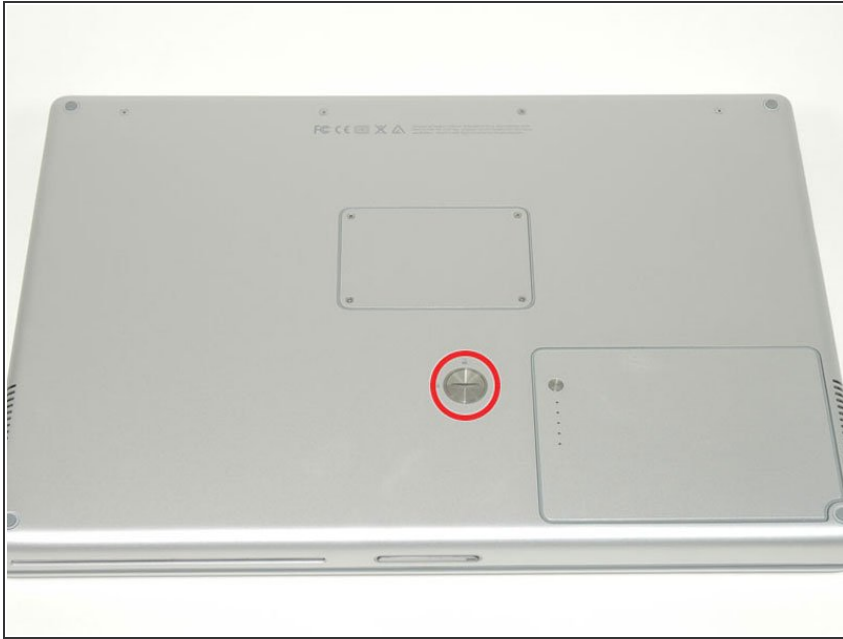
- [Coin](#) (1)
- [Phillips #00 Screwdriver](#) (1)
- [T6 Torx Screwdriver](#) (1)



PARTS:

- [G4 Aluminum 15" Left Ambient Light Sensor](#) (1)

Step 1 — Battery



- Use a coin to turn the battery locking screw 90 degrees clockwise.
- Lift the battery out of the computer.

Step 2 — Upper Case



- Remove the four Phillips screws from the memory door.
- Slide the memory door away from the memory compartment.

Step 3



- Remove the following 8 screws:
 - Two 3 mm Phillips in the battery compartment, on either side of the battery contacts.
 - Two 12 mm Phillips on either side of the memory compartment.
 - Four 16 mm Phillips along the hinge.

Step 4



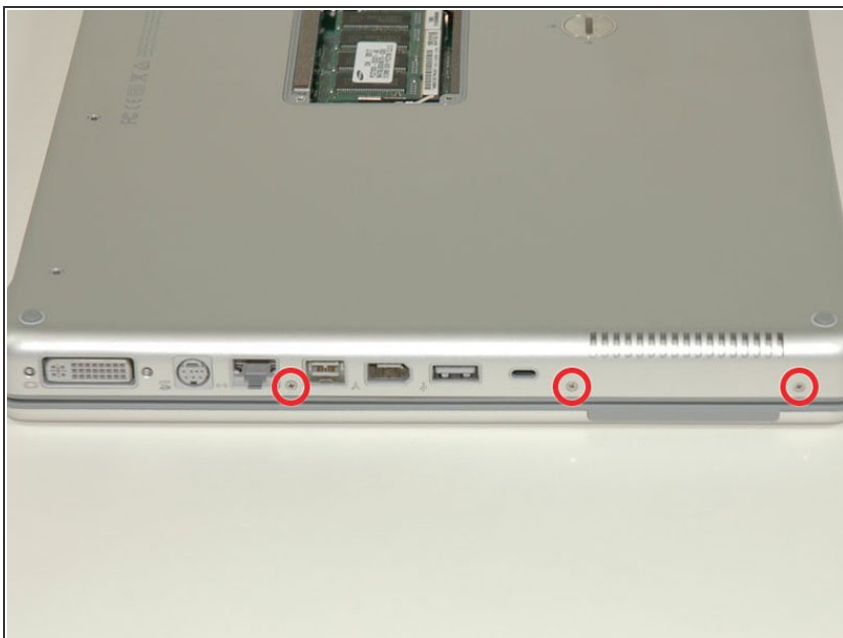
- Rotate the computer 90 degrees clockwise, so that the power receptacle faces you.
- Remove the three 3 mm Phillips screws.
- ☑ When replacing these screws, you must place each screw in the correct order. Begin by installing the screw closest to the display hinge, and go out from there.

Step 5



- Turn the computer 90 degrees clockwise so that the hinge faces you.
- Remove the bottom 5 mm Phillips screw on either side of the hinge (two total).

Step 6



- Rotate the computer 90 degrees clockwise, so that the ports face you.
- Remove the three 3 mm Phillips screws.
- ☑ When replacing these screws, you must place each screw in the correct order. Begin by installing the screw closest to the display hinge, and go out from there.

Step 7



- Turn the computer over and open the display.
- Remove the two 1.5 mm hex screws in either corner, next to the display (a T6 Torx driver will work, but repeated use will strip the screws).

Step 8



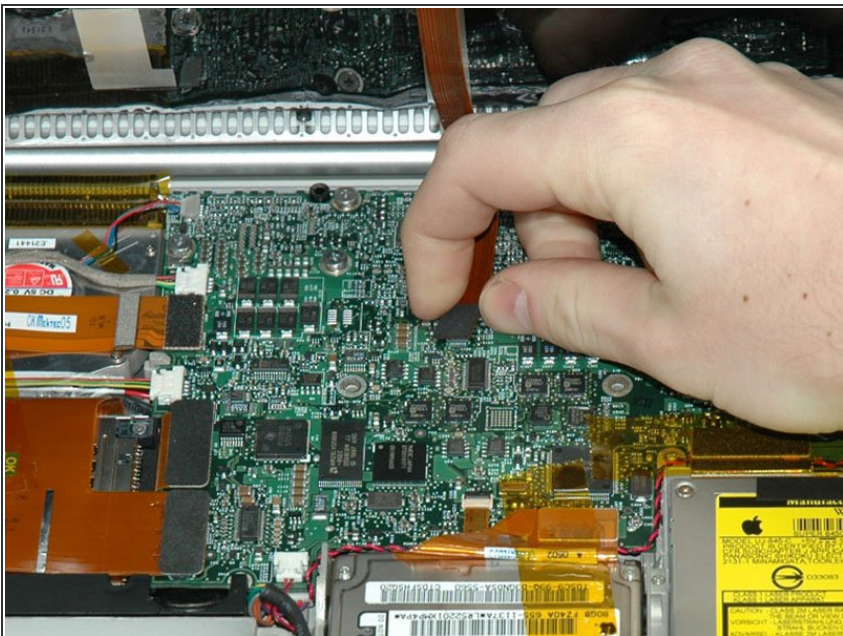
- Grasp the back corners of the upper case and pull up. Do not pull the upper case off yet; you still need to disconnect the keyboard and trackpad cable.
- Lift the back of the case up and work your fingers along the sides, freeing the case as you go. Once you have freed the sides, you may need to rock the case up and down to free the front of the upper case.

Step 9



- Rotate the upper case up and toward the screen, so that the upper case rests against it.

Step 10



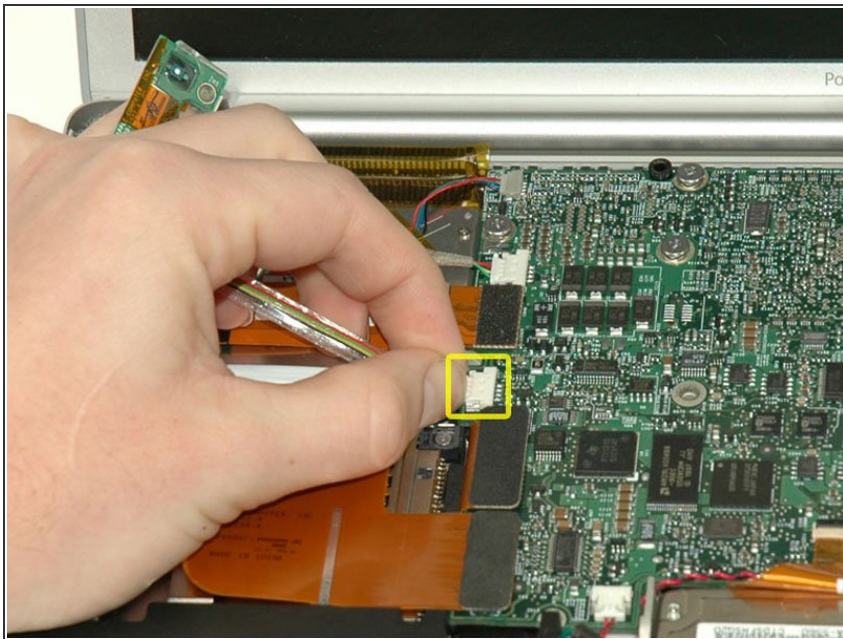
- Remove the orange tape securing the trackpad ribbon to the logic board.
- Disconnect the trackpad ribbon from the logic board.
- Remove the upper case from the computer.

Step 11 — Left Ambient Light Sensor



- Remove the two small black Phillips screws from the left ambient light sensor board.

Step 12



- There may be a large piece of orange tape securing the left ambient light sensor cable. Remove the tape.
- Disconnect the left ambient light sensor cable, freeing the board.

To reassemble your device, follow these instructions in reverse order.

This document was last generated on 2019-07-11 02:32:23 AM.