



iPad Mini 3 Wi-Fi Front Facing Camera Cable Replacement

Prereq to disconnect the front-facing camera.

Written By: Sam Goldheart



INTRODUCTION

Prereq only.

TOOLS:

- [Tweezers](#) (1)
 - [iFixit Opening Tools](#) (1)
-

Step 1 — Front Facing Camera Cable



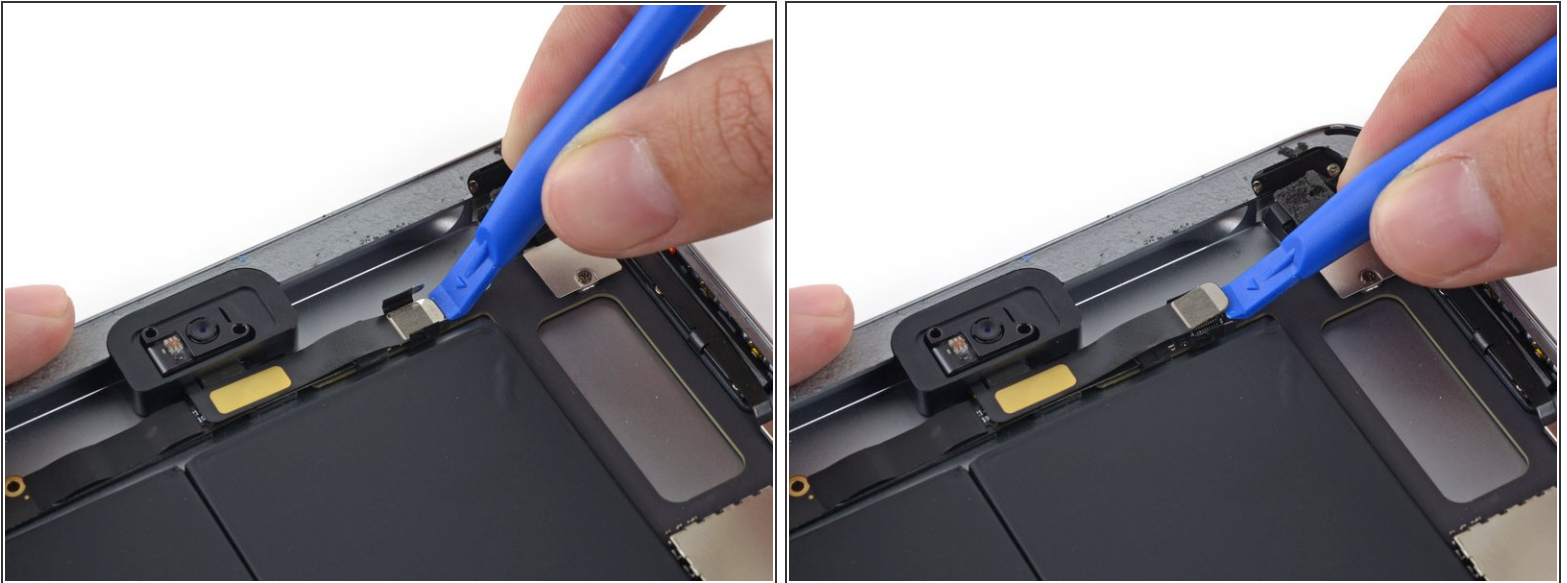
- Use a set of tweezers to remove any tape covering the front-facing camera cable clips.

Step 2




- Use a plastic opening tool to fold the front-facing camera cable clips outward, away from the cable, freeing the cable connector.

Step 3



- Use a plastic opening tool to lift the front-facing camera cable connector straight up off of its socket on the logic board.

 Be sure to only pry on the connector, **not** the socket itself.

To reassemble your device, follow these instructions in reverse order.