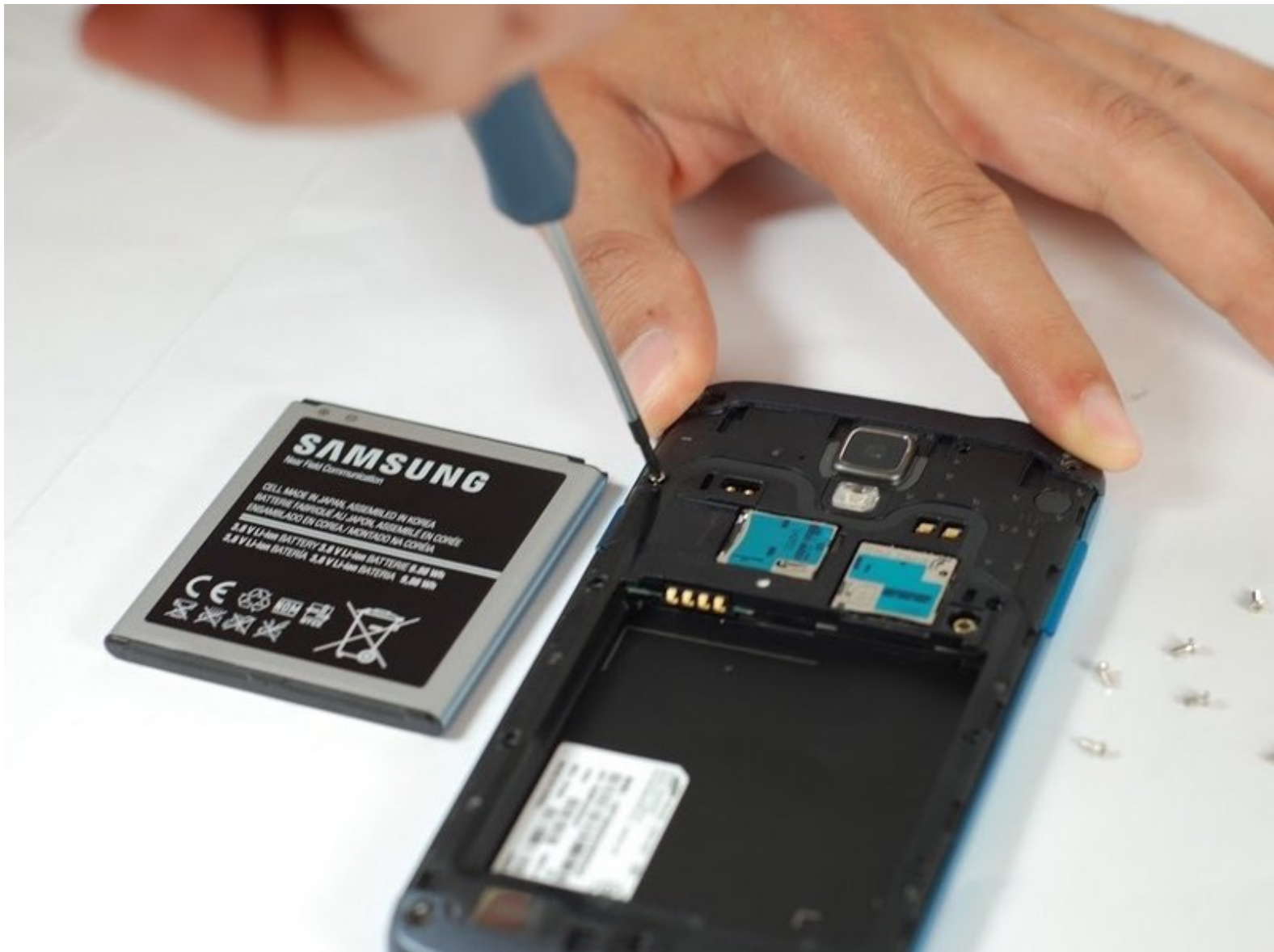




Samsung Galaxy S4 Active Midframe Replacement

Replace the midframe.

Written By: Geoff Wacker



INTRODUCTION

Use this guide to replace the midframe on your Samsung Galaxy S4 Active.



TOOLS:

- [iFixit Opening Tools](#) (1)
- [Phillips #00 Screwdriver](#) (1)
- [Spudger](#) (1)



PARTS:

- [Samsung Galaxy S4 Active Midframe](#) (1)

Step 1 — Rear Case



- Pry with a plastic opening tool, or your fingernail, in the divot to the left of the rear-facing camera, near the power button.
- Lift the rear case by the corner nearest the divot and remove it from the phone.

Step 2 — MicroSD Card



- Use a plastic opening tool, or your fingernail, to press the microSD card slightly deeper into its slot until you hear a click.
- After the click, release the card and it will pop out of its slot.
- Remove the microSD card.

Step 3 — Battery



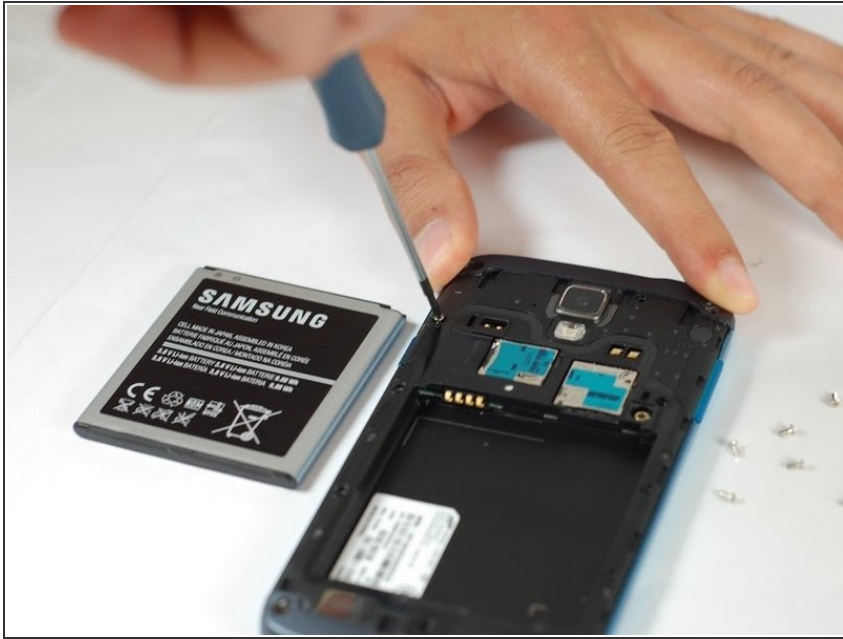
- Insert a plastic opening tool, or your finger, into the notch of the battery compartment and lift the battery upward to remove it.

Step 4 — SIM Card



- Use a plastic opening tool, or your fingernail, to press the SIM card slightly deeper into its slot until you hear a click.
- After the click, release the card and it will pop out of its slot.
- Remove the SIM card.

Step 5 — Midframe



- Use the tip of a spudger to remove the four metallic pads located in each corner of the device.
- Using a Phillips #00 screwdriver, remove the 12 screws connecting the midframe to the device.

Step 6



- Use the plastic opening tool to pry around the entire edge of the midframe now to release it from the front case.

To reassemble your device, follow these instructions in reverse order.