



JBL Spyro Bottom Plate Replacement

This provides access to the subwoofer itself.

Written By: Ryan McLeod



INTRODUCTION

This guide shows you how to remove the bottom plate, this provides access to the subwoofer itself.

TOOLS:

- [Heavy-Duty Spudger](#) (1)
-

Step 1 — Locate the risers



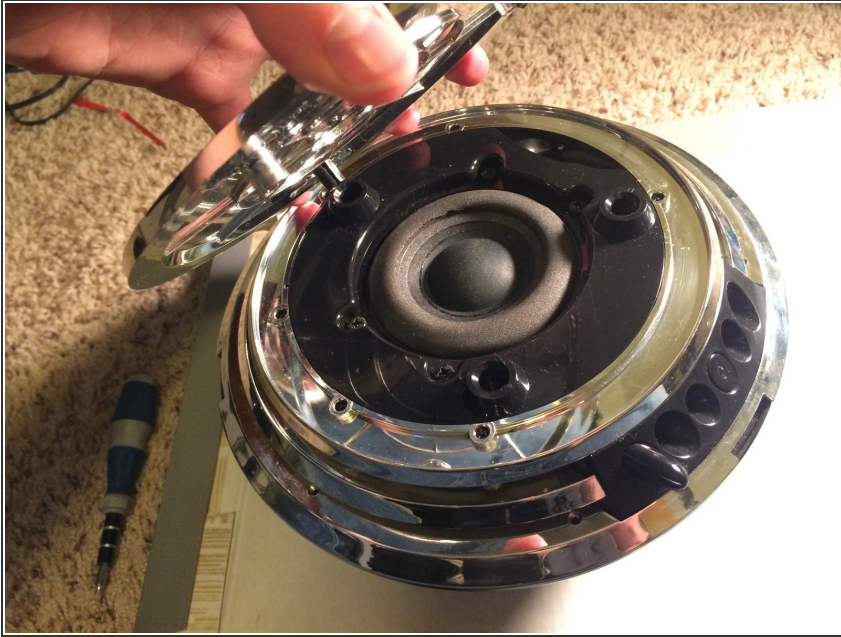
- Locate the **3 risers** the hold the base plate in place

Step 2 — Pry the plugs from the risers



- Insert a strong spudger or flathead near the riser and gently pry until the plug starts to come out. Work your way around to loosening each one.

Step 3 — Remove the base plate



- With all three loosened remove the base!
- Note the not equilateral placement of the risers when replacing the base.

To reassemble your device, follow these instructions in reverse order.