



LG G Watch R Teardown

The new LG G watch R teardown

Written By: Dustin Richards



INTRODUCTION

This is a simple teardown of the LG G watch R.

TOOLS:

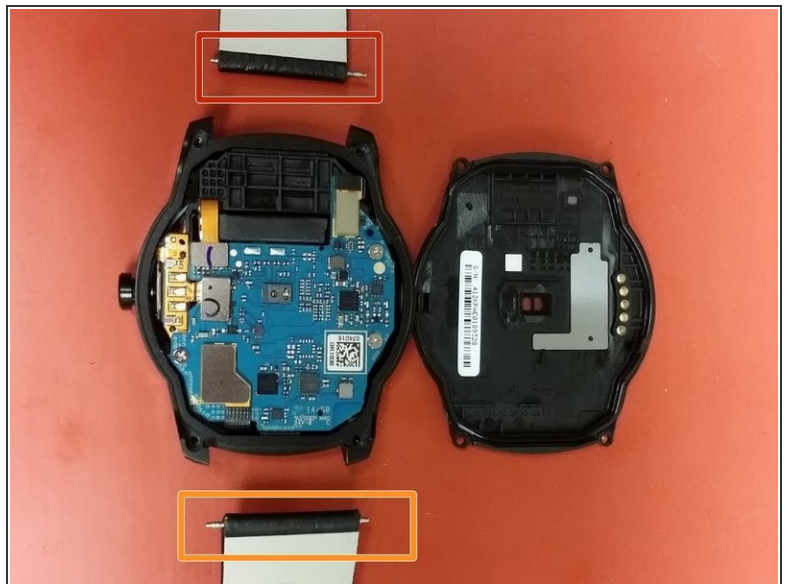
- [Essential Electronics Toolkit \(1\)](#)
-

Step 1 — Front and Back



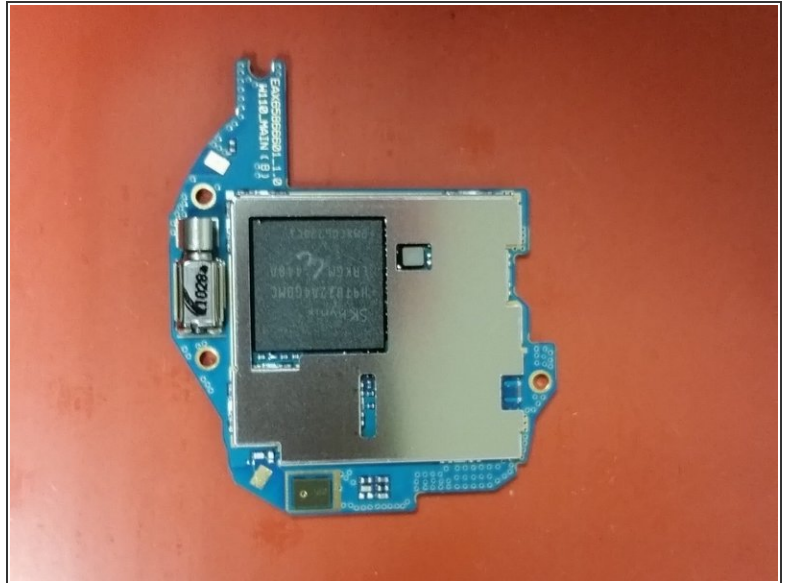
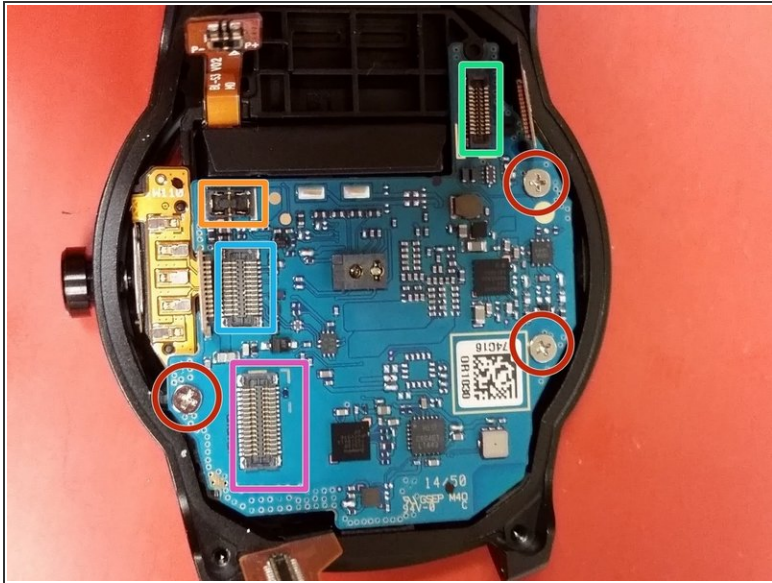
- LG G Watch R assembly.

Step 2 — Removing the back cover



- First remove the watch band using a small flat screw driver to compress the spring loaded pin.
- Remove the four T4 torx screws (Green).
- Carefully pry the base off using a thin flat screw driver

Step 3 — Removing the Board



- Disconnect the four electrical connectors from the board
- Orange - Battery connector
- Blue - button and charging connector
- Green - Backlight
- Purple - O-LED Controller + Mic
- Remove the three phillips screws securing the board down. Then lift the board off the base

Step 4 — The Battery



- The battery is below the board.
- The battery can easily be pried out using a small flat head screwdriver.

Step 5 — Battery housing



- Using a small pliers and a small flat screwdriver the battery housing comes out easily.

Step 6 — P-OLED Panel



- Pictures of the front and back of the 1.3" P-OLED.
- The screen is glued in.