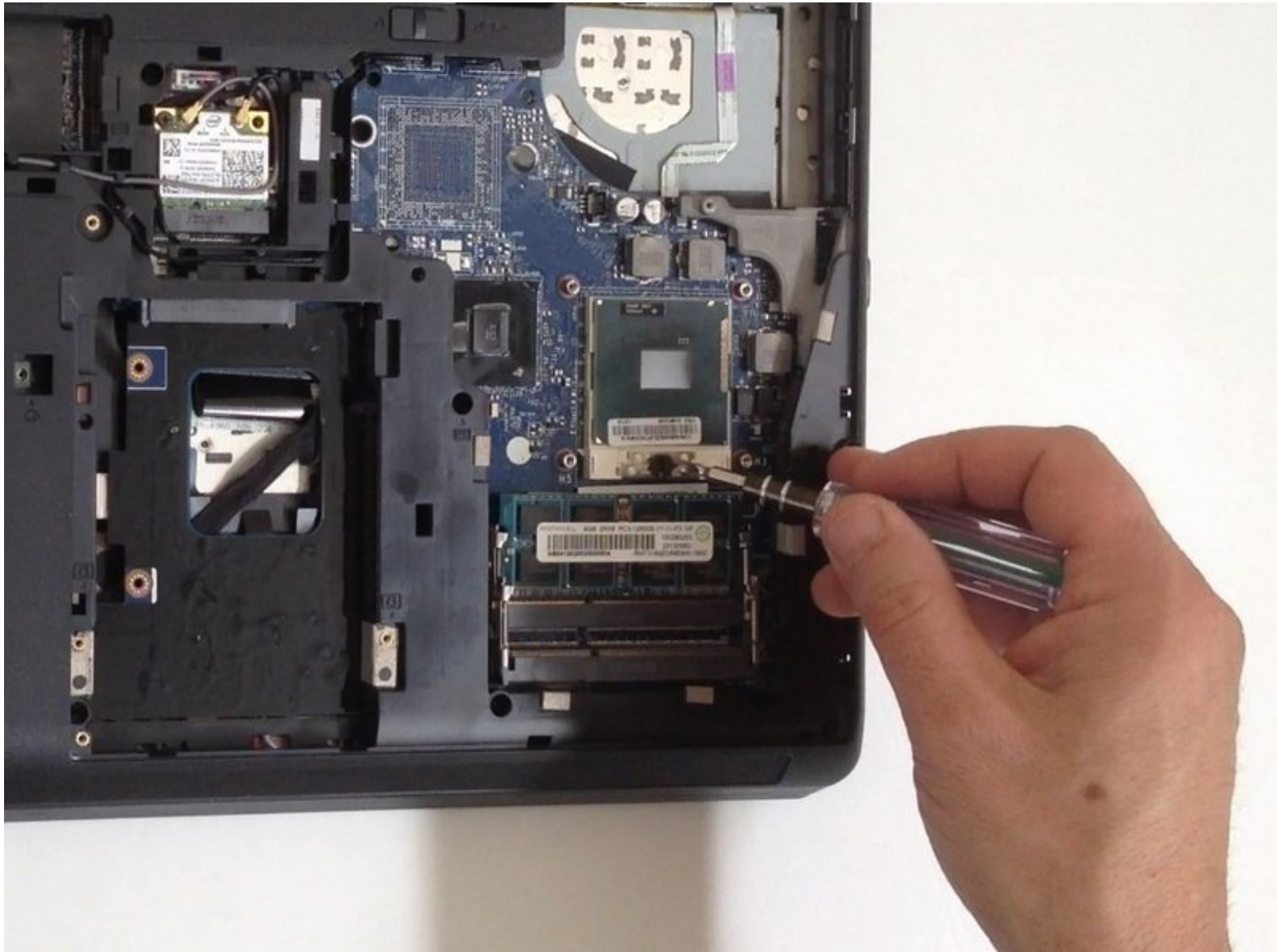




Lenovo ThinkPad Edge E530, E530c Processor / CPU Replacement

Lenovo ThinkPad Edge E530, E530c Main Processor / CPU Replacement

Written By: ZFix



INTRODUCTION

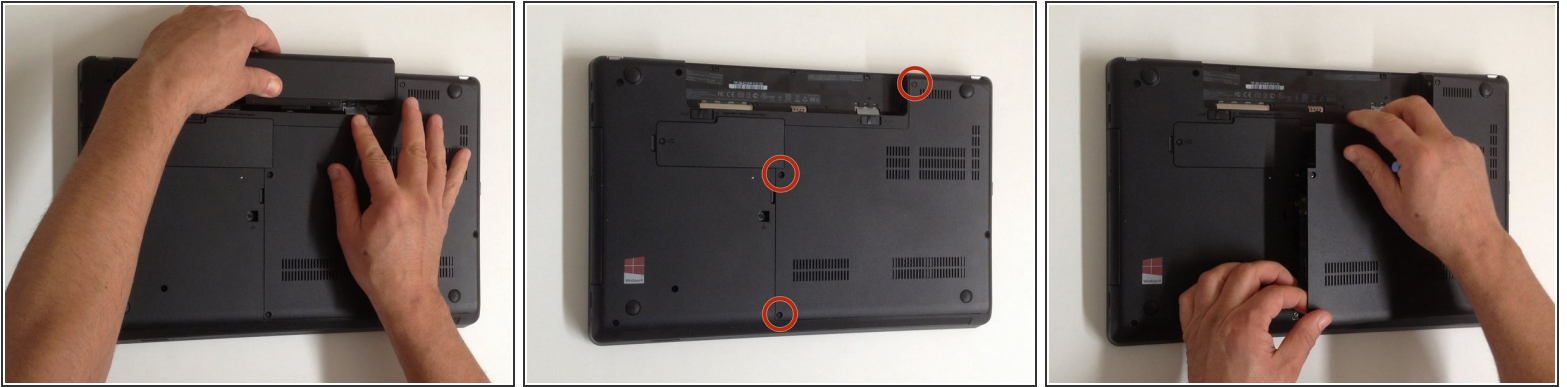
Lenovo ThinkPad Edge E530, E530c - how to replace / upgrade the Processor.

[video: <http://youtu.be/MM-G4OkeagQ>]

TOOLS:

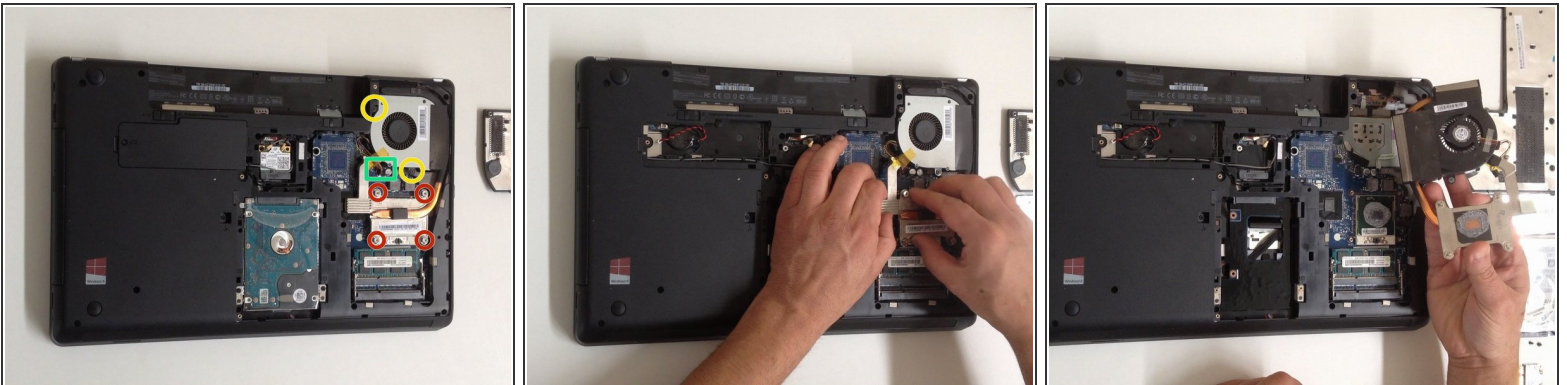
- [iFixit Opening Tools](#) (1)
 - [Spudger](#) (1)
 - [Phillips #0 Screwdriver](#) (1)
 - [Tweezers](#) (1)
 - [Isopropyl Alcohol](#) (1)
 - [Arctic Silver Thermal Paste](#) (1)
 - [Anti-Static Brush](#) (1)
-

Step 1 — HDD Cover



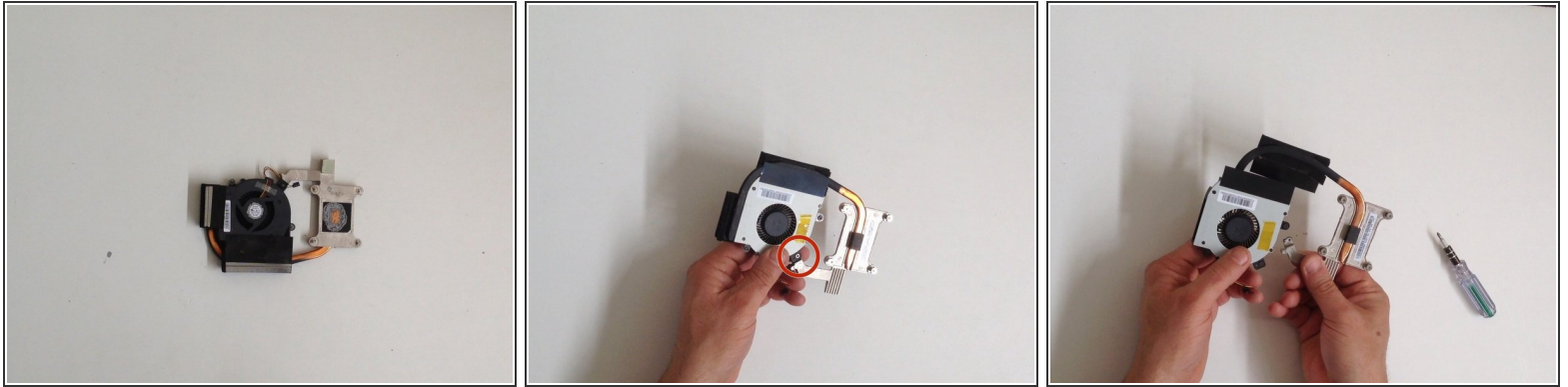
- Switch-off the Laptop and remove the battery.
- The HDD/Memory Cover is held by 3x Phillips screws. Remove them.
- Remove the Cover.

Step 2 — Fan / Cooling System



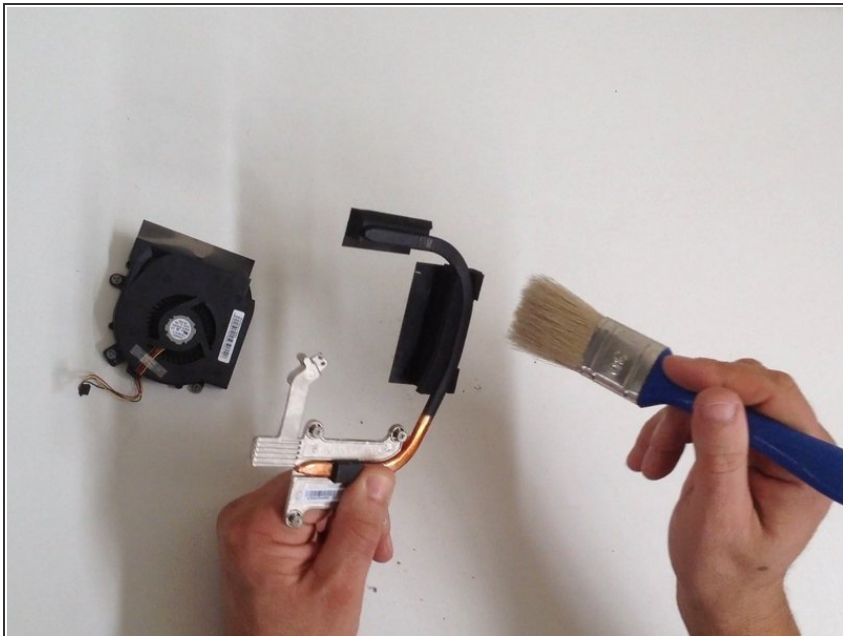
- Disconnect the Fan cable.
- Remove the 2x screws from the Fan module.
- Unscrew 4x screws around the processor.
- Carefully lift the Cooling System.

Step 3



- Use a lint-free cloth and isopropyl alcohol to clean the old thermal compound.
- ⓘ If the thermal compound is solidified, you can use a flat end of any plastic tool to scrape it off.
- Separate the Fan from the Heat-sink.

Step 4



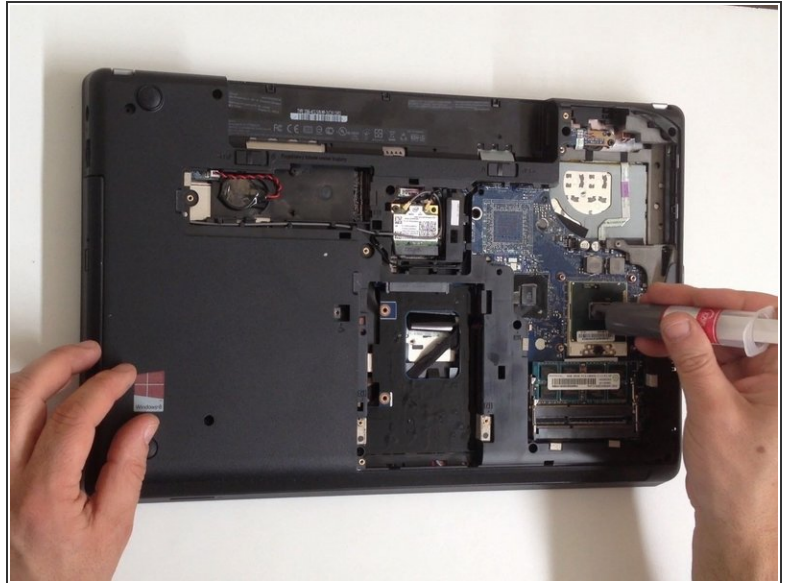
- Use a soft anti static brush and clean the Heat-sink on the inside.
- ⚠ Before installing a new Cooling System or reinstalling the old one, you must clean the processor from the old thermal compound and put a new one.

Step 5 — Processor / CPU



- Clean the old thermal compound. Use a lint-free cloth and isopropyl alcohol to clean the old thermal compound.
- ⓘ If the thermal compound is solidified, you can use a flat end of any plastic tool to scrape it off.
- To remove the Processor, turn the CPU socket screw 90 degrees to open the socket.
- Lift the Processor from the socket.
- ⚠ Be careful to lift straight up without bending the CPU pins.

Step 6



- ⓘ Before you place the new Processor, be sure the socket screw is in the open position.
- ⚠ Delicately place the Processor into the socket.
 - Close the socket with the socket screw.
 - Put thermal compound on the processor surface and carefully install back the Cooling system.

To reassemble your device, follow these instructions in reverse order.