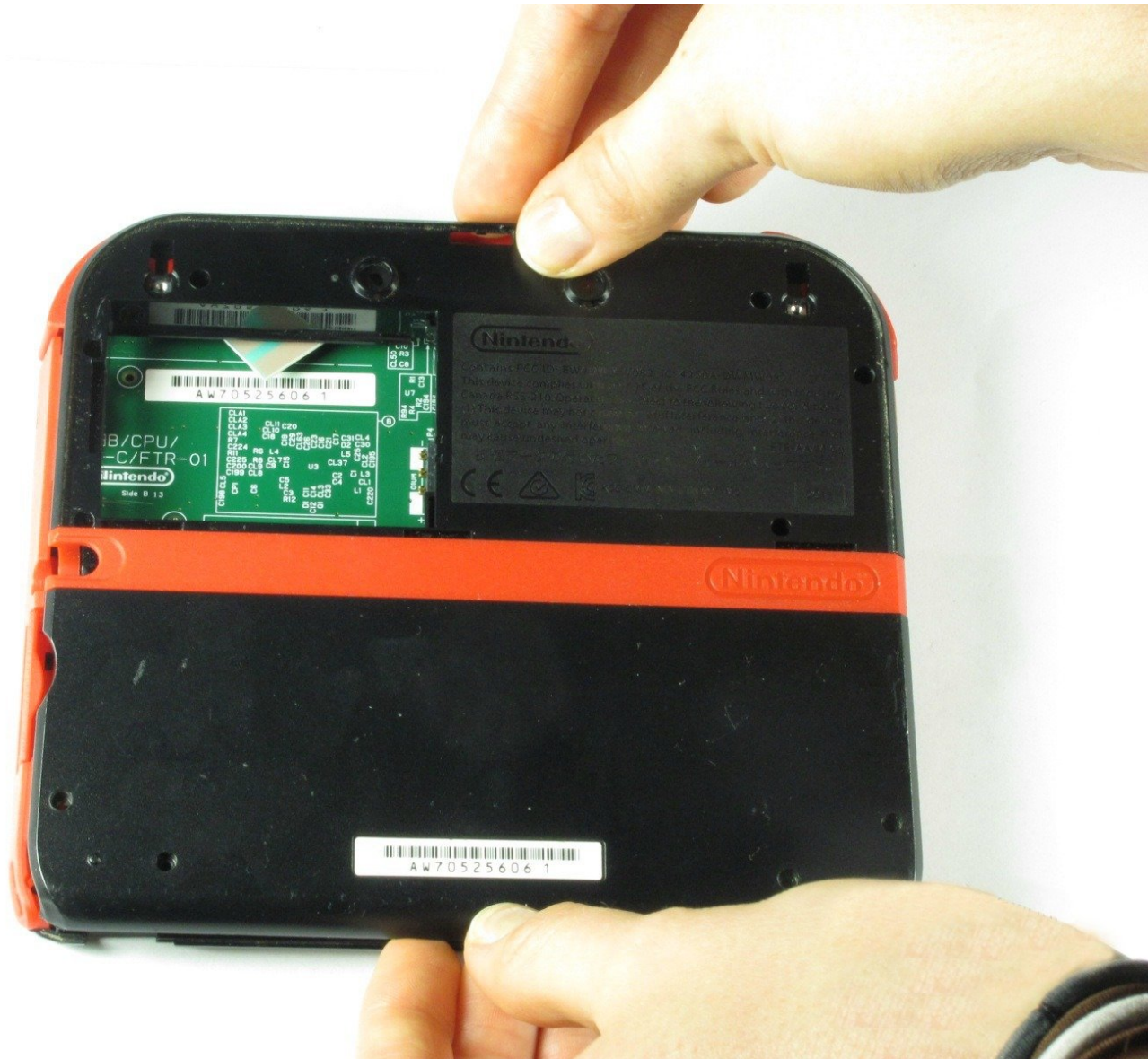




Nintendo 2DS Rear Panel Replacement

This guide will accomplish removing the back panel from the Nintendo 2DS.

Written By: Fina Beauchamp



INTRODUCTION

This is a guide for the removal of the back panel of the Nintendo 2DS. This guide will illustrate how to remove the screws attaching the back panel in order to access other parts of the Nintendo 2DS.

TOOLS:

- [Phillips #00 Screwdriver](#) (1)
-

Step 1 — Rear Panel



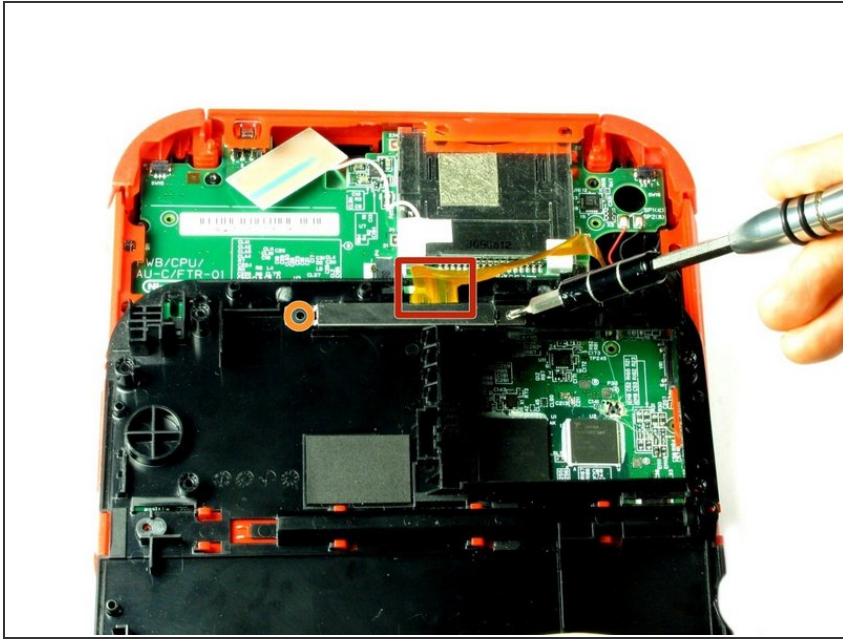
- Remove the ten Phillips screws attaching the rear panel.

Step 2



- ⓘ The rear panel is attached to the motherboard by a ribbon cable, so be careful not to lift the rear panel too far from the device.
- Carefully pull the rear panel straight up from the device.

Step 3



- Carefully flip the back panel over to locate the attached ribbon cable.
- Remove the two Phillips screws attaching the ribbon cable to the rear panel.
- ⓘ Take the opportunity to remove the Left and Right triggers, they have hinges that may break and springs that may jump away.

To reassemble your device, follow these instructions in reverse order.