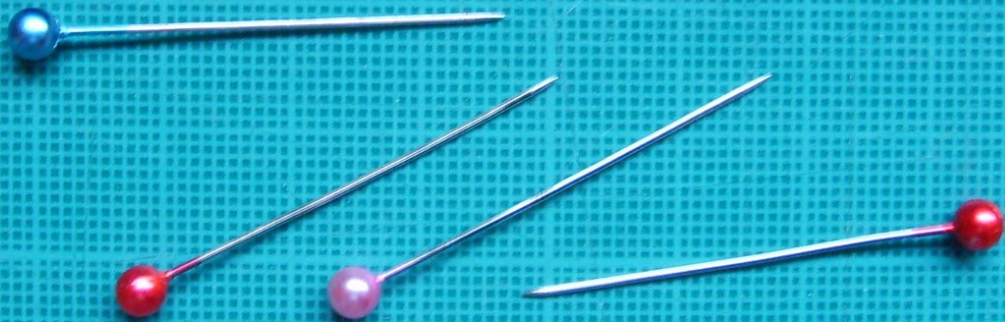




Alternative Opening Procedure

An alternative to the "crowbar" method using a putty knife. This method uses no force and causes no damage.

Written By: Donald Todd



INTRODUCTION

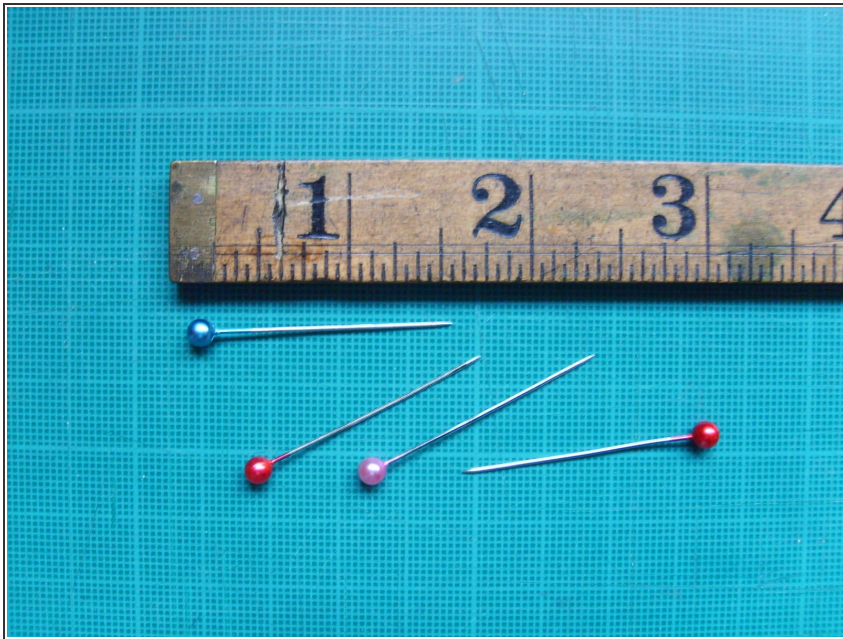
Prying the case open will inevitably cause damage. This method disengages the catches to allow the case to be easily opened by hand.

The technique is probably applicable to the Intel Mini which has similar catches, but has not been tried.

TOOLS:

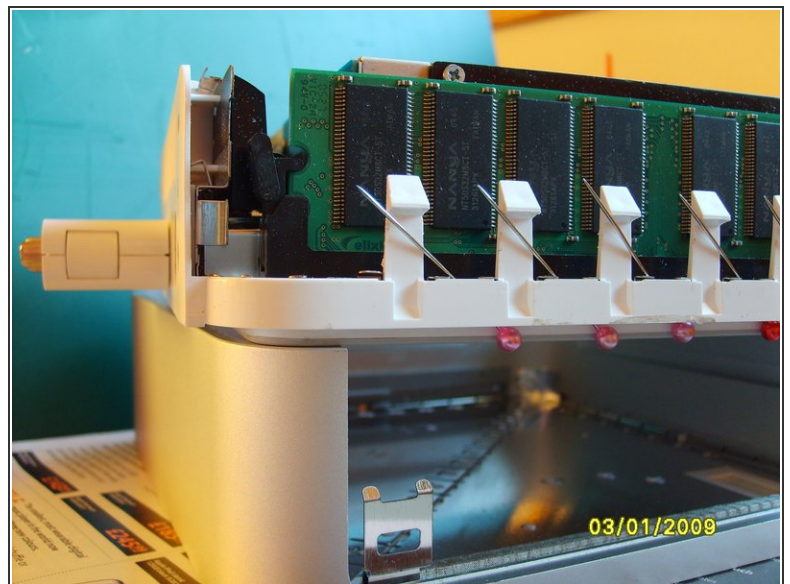
- Pins approximately 1-1/2inches (38mm) long.
(1)
-

Step 1 — Alternative Opening Procedure



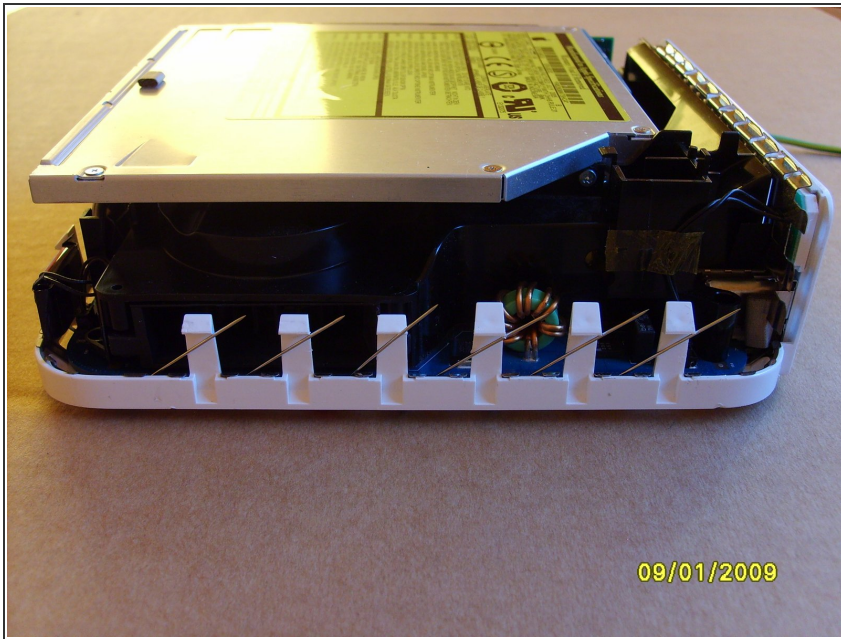
- Instead of a putty knife a dozen or more 1-1/2" pins are required.

Step 2



- With the computer upside down identify the apertures where the catches are located along either side and also at the front.
- Insert the pins from the **adjacent** apertures between the wall and each catch. Be very careful to keep the pins against the case wall. This is more obvious from the second photo with the case removed.

Step 3



- Lift the case off from the back first.
- Remove the pins from the main assembly.

Re-assembly does not require the pins. Place the case over the computer and press down evenly on the sides, **not the middle**. Ensure the back panel is correctly aligned before finally pushing home the catches.

This document was last generated on 2019-08-22 02:13:57 AM.