



iPad Mini 2 Wi-Fi Front Panel Replacement

prereq only

Written By: Sam Goldheart



INTRODUCTION

prereq only



TOOLS:

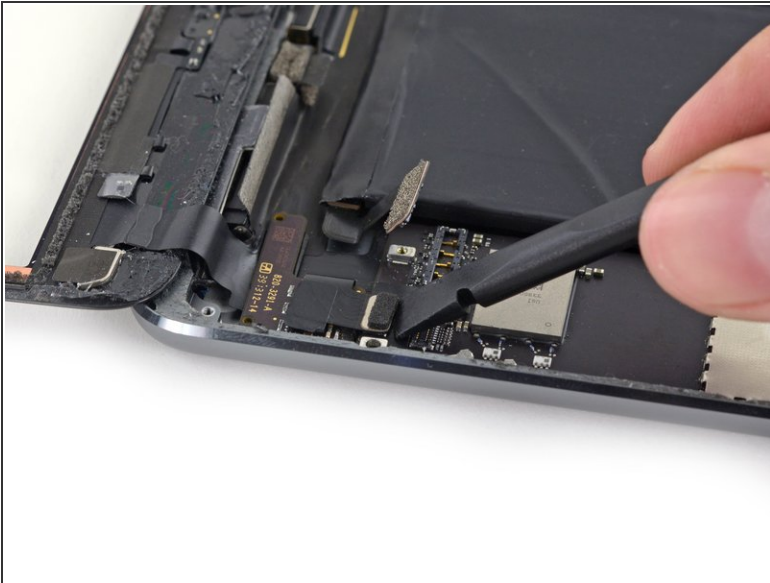
- [iFixit Opening Picks set of 6](#) (1)
- [iOpener](#) (1)
- [Phillips #00 Screwdriver](#) (1)
- [Spudger](#) (1)
- [Tweezers](#) (1)



PARTS:

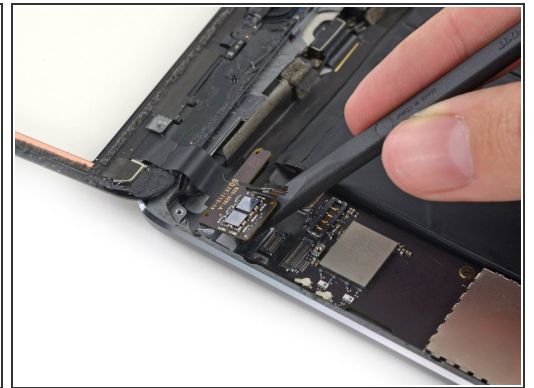
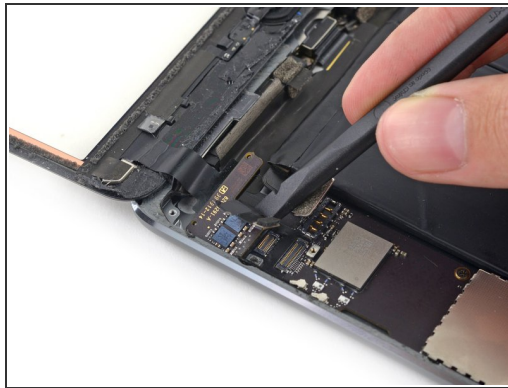
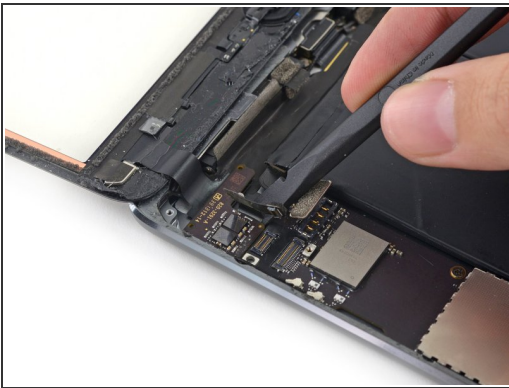
- [iPad mini & mini 2 Adhesive Strips](#) (1)

Step 1 — Front Panel



- Use the flat end of a spudger to lift the digitizer cable connector straight up off of its socket.
 - ⚠ Be careful as you lift the connector from the socket—the pins in the socket are extremely fragile and can easily break!

Step 2



- Slide the spudger under the battery side of the digitizer board to begin separating it from the rear case.
- Lift the digitizer board up to free the last of the adhesive.

Step 3



- Lift and remove the front panel from the iPad.

To reassemble your device, follow these instructions in reverse order.