



Parrot AR.Drone 2.0 Motor Replacement

How to diagnose and replace a faulty motor on your Parrot AR.Drone 2.0.

Written By: David Hoyt



INTRODUCTION

Use this guide to diagnose and replace a faulty motor on your Parrot AR.Drone 2.0.

AR.Drone 2.0 spare parts and mounting tools are available from [several Parrot retailers](#).

[video: <http://youtu.be/DNMOIWJCbM4>]



TOOLS:

- [iFixit Opening Tools](#) (1)
- [Phillips #00 Screwdriver](#) (1)



PARTS:

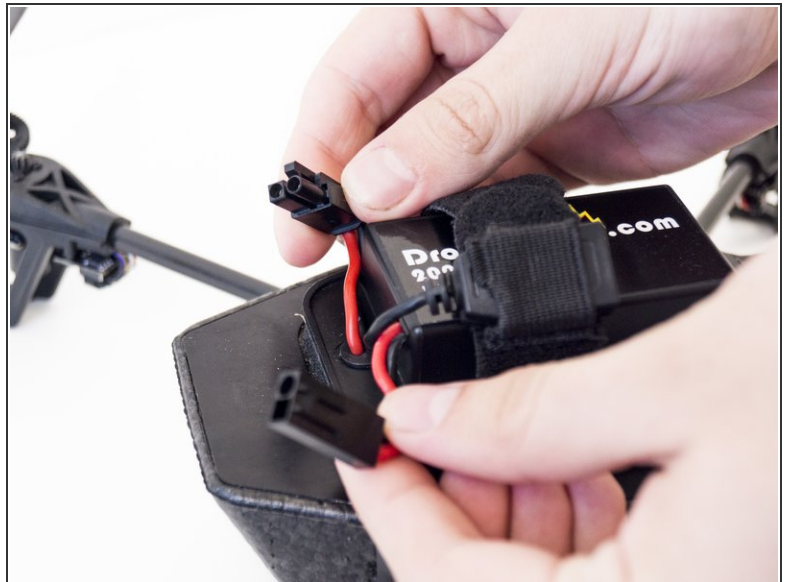
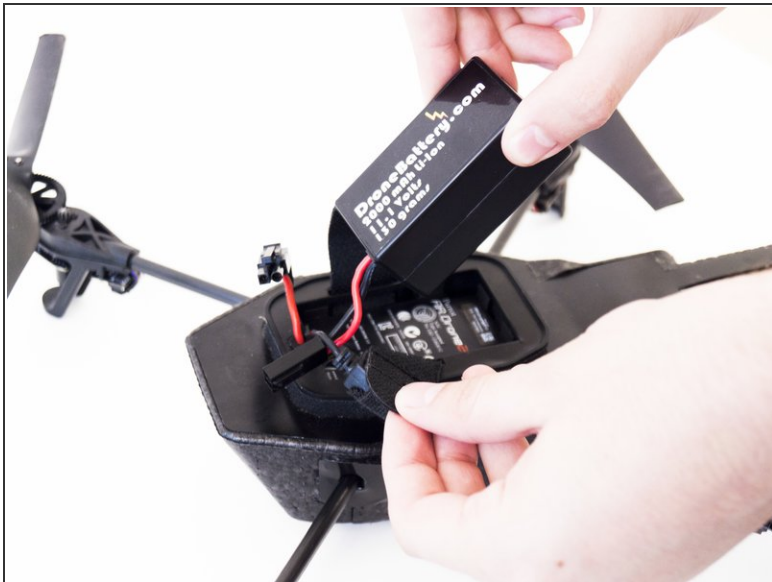
- [Parrot AR Drone 2.0 Motor and Controller](#) (1)

Step 1 — Propeller and Gear



- Remove the foam body.

Step 2



- Disconnect the battery by pulling the two red wires apart.
- Remove the battery by releasing the battery retaining straps.

Step 3



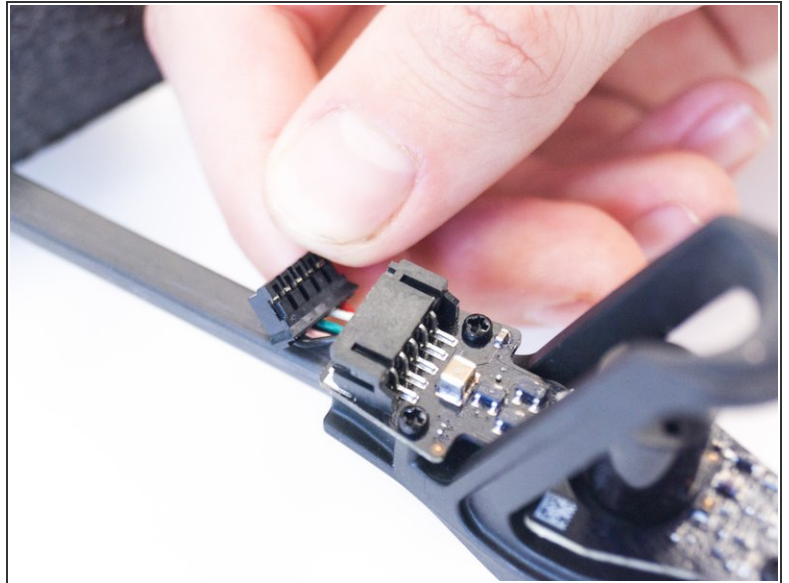
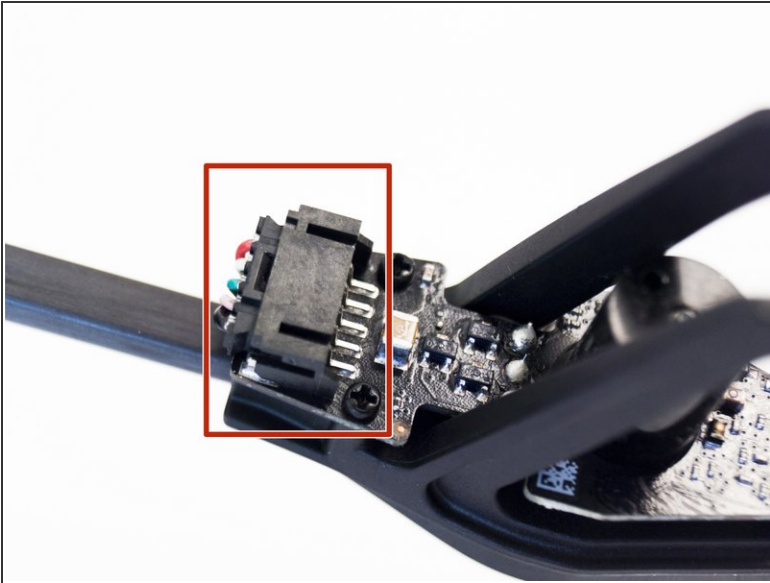
- Remove the small retaining clip using a plastic opening tool.
- ⓘ Be careful as these clips can fly off and can be difficult to find.

Step 4



- The propeller, gear, and rod can be removed by simply lifting them off the motor.

Step 5 — Motor



- Disconnect the connector at the bottom of the motor assembly.

Step 6



- Remove the three 5mm screws on the top of the motor assembly with a PH00 bit.

Step 7



- Remove the three 5mm screws on the bottom again using a PH00 bit.
- ⓘ The three screws from the top are different from the three screws on the bottom.

Step 8



- Carefully wiggle out the motor assembly out of the arm.

To reassemble your device, follow these instructions in reverse order.