

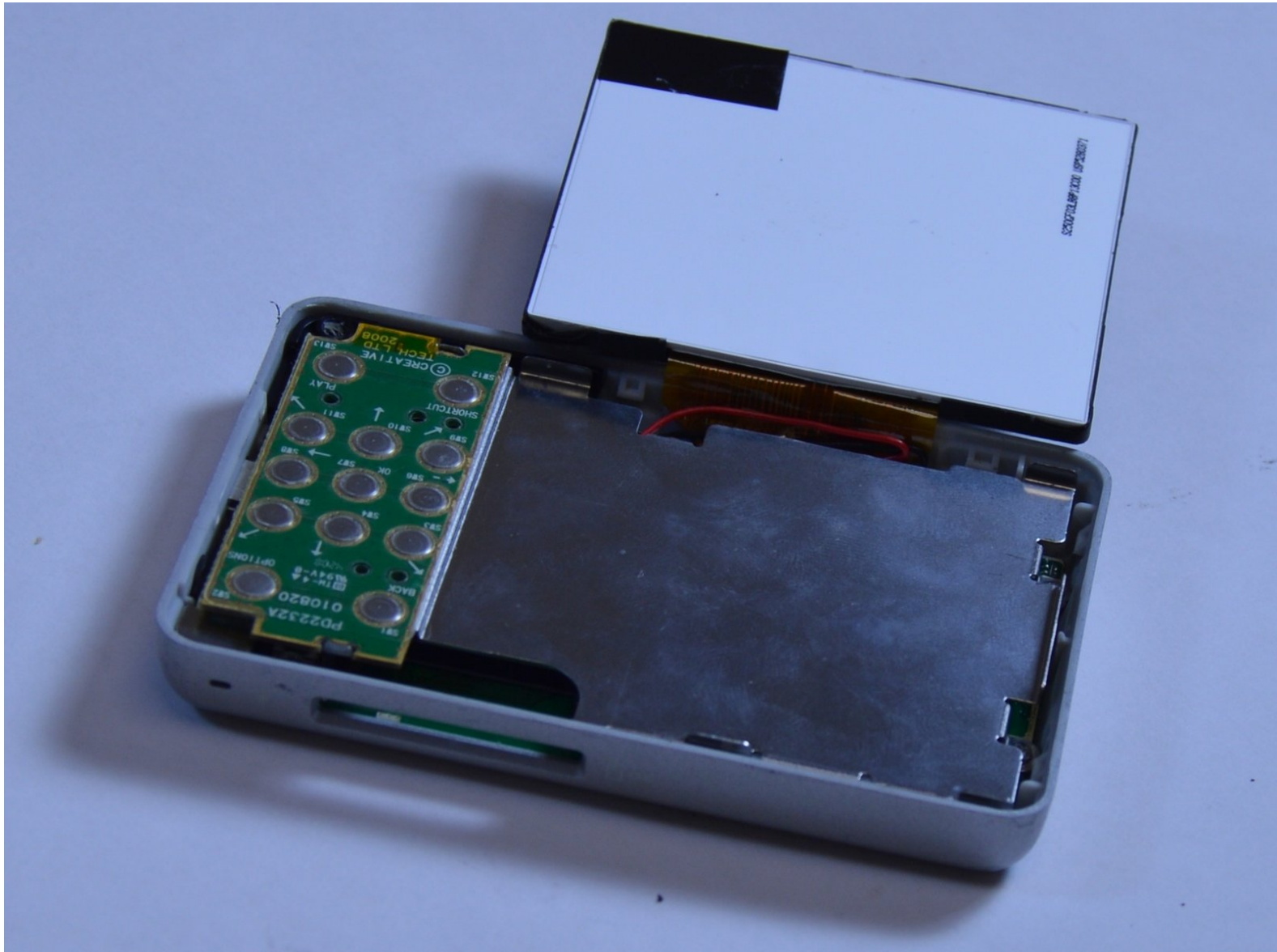


# Replacing Creative Zen X-Fi Button Input Chip

## Part 1

Prerequisite Only

Written By: Westley Courchene



---

## INTRODUCTION

This chip allows the user to input information to the device and to navigate the MP3 player's menus.

---

### TOOLS:

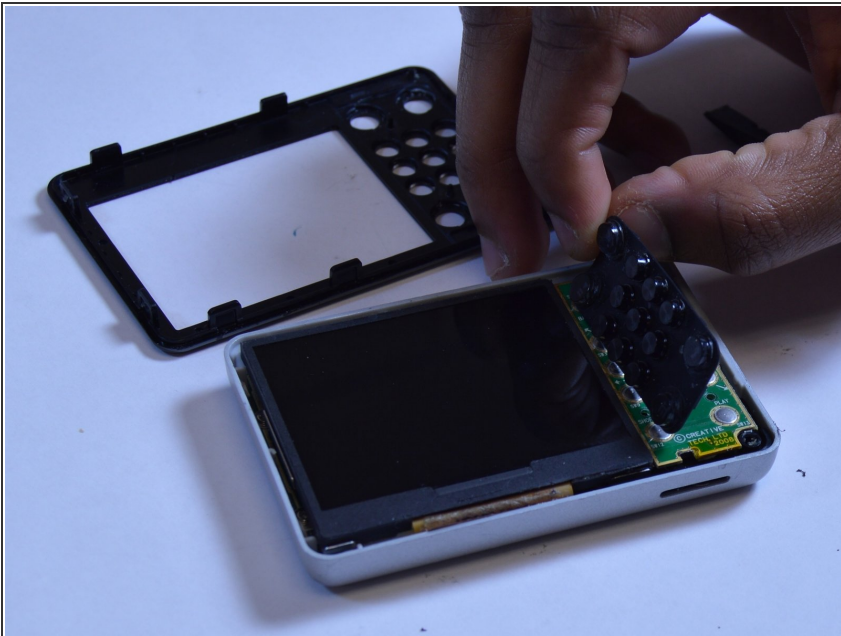
- [Spudger](#) (1)
-

## Step 1 — Detaching Front Case



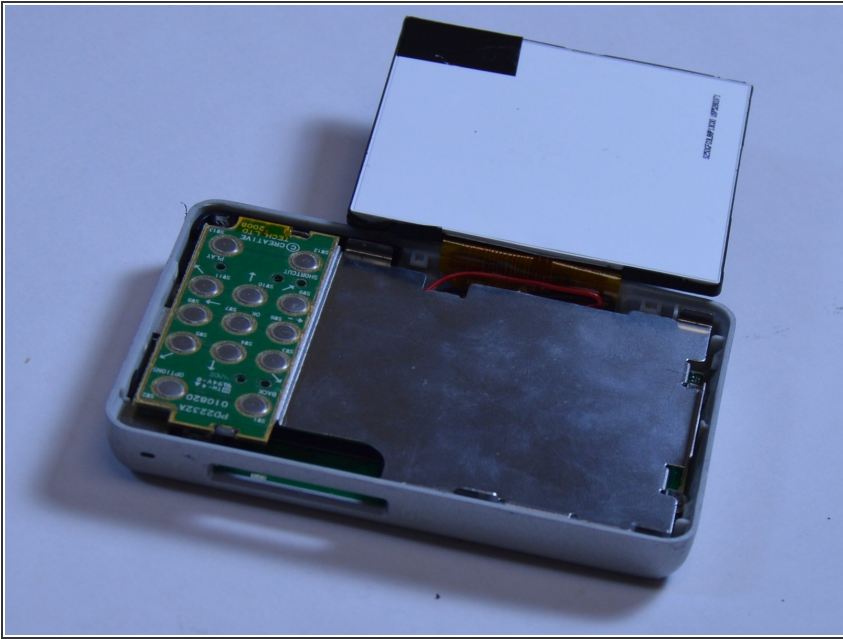
- Using a spudger, wedge the tip between the front and back case to pry them apart.
- ⓘ Be careful to not apply excessive force since there are six fasteners on the screen's side that holds the cases firmly together.

## Step 2 — Rubber Button Cover



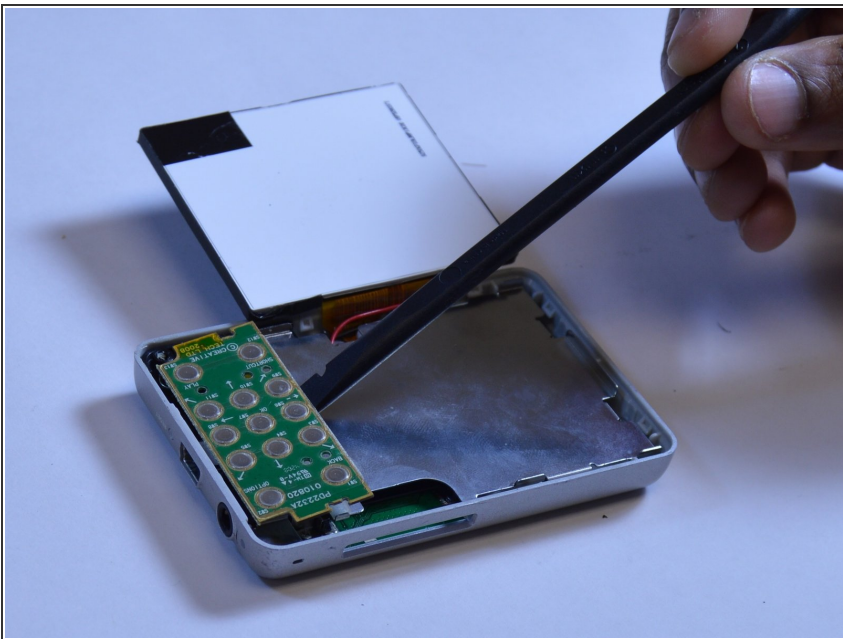
- The black rubber button pad can be removed by simply picking it up.

### Step 3 — Button Input Chip Part 1



- Flip the LCD screen off the midsection plate to gain access to the space around the input button chip.

### Step 4 — Button Input Chip



- Using a spudger, pry off the button input chip from the mid-section of the device. To gain best leverage,

---

start at the bottom right corner and level your way up the side of the chip.

- ⓘ Be aware that the button input chip is glued to the mid-section, so some extra force may be required.
- 

To reassemble your device, follow these instructions in reverse order.