



Eclipse 180G2 Outer Case Replacement

This guide will show the removal of the internal circuit board from the outer shell without damaging the device.

Written By: Jesse Minor



INTRODUCTION

Removal of the internal circuit is crucial step in replacing any component. This guide is the first step in replacing any part on the device.

TOOLS:

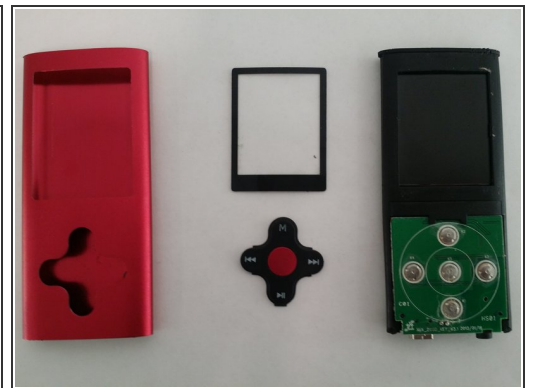
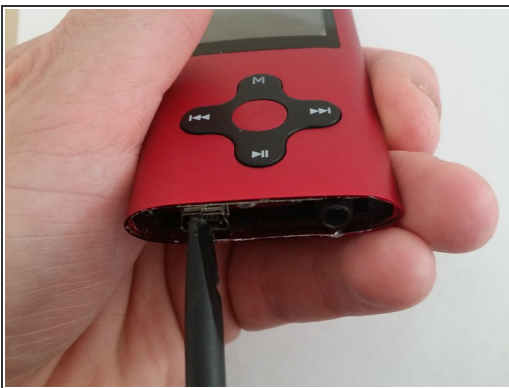
- [Phillips #00 Screwdriver](#) (1)
 - [Spudger](#) (1)
-

Step 1 — Outer Case



- Remove the two screws on the bottom of the device with a Phillips head screwdriver.
- Use a spudger to remove the plastic plate from the bottom of the player.

Step 2 — Remove inner circuit from case shell



- Use the spudger to push the USB port on the bottom of the device inward.
- Hold the device firmly between two fingers. Be sure you aren't holding down the top of the device; the circuit board will slide out of the shell through that end.
- The plastic LCD cover and the key pad will now be free; they were held in place by the tension between the case and the internal circuit board.

To reassemble your device, follow these instructions in reverse order.