



Toshiba Excite 7 Battery Removal

How to remove the battery of a Toshiba Excite 7.

Written By: osmel fermin



INTRODUCTION

The battery is the main power source of your device. After replacing your battery you should receive up-to 13 hours of battery life assuming normal usage.

TOOLS:

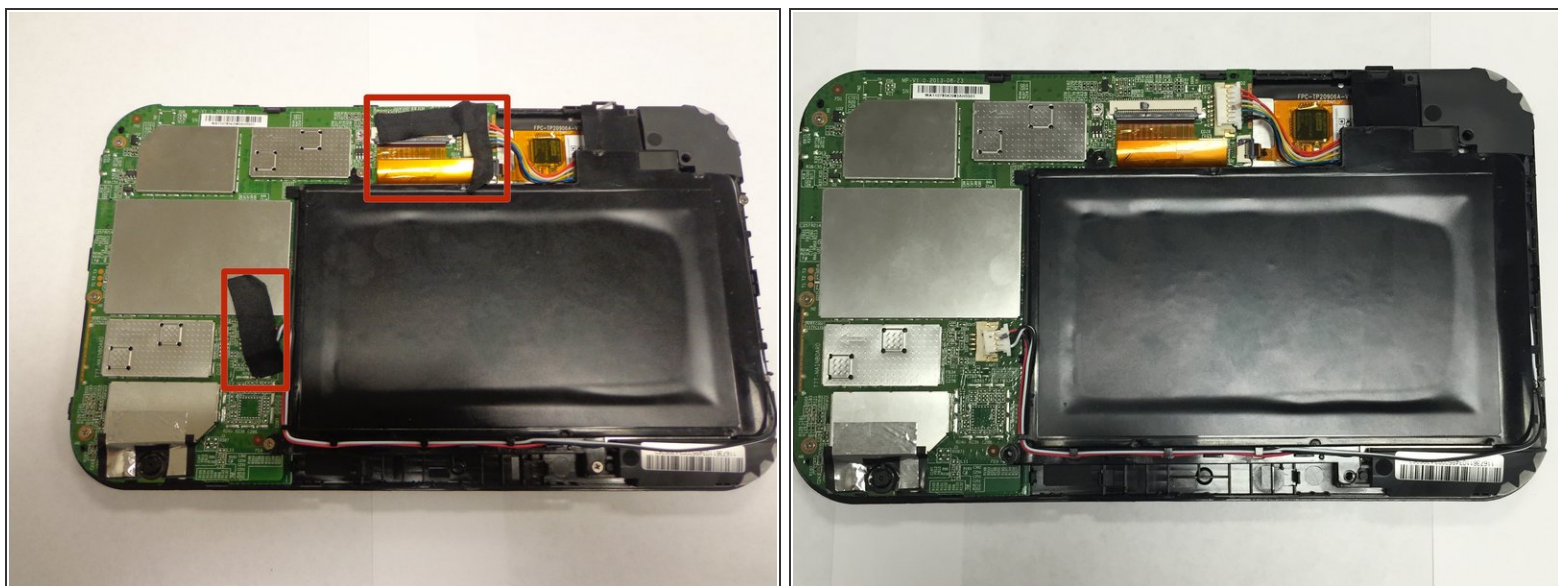
- [iFixit Opening Tools](#) (1)
 - [64 Bit Driver Kit](#) (1)
 - [Magnetic Project Mat](#) (1)
 - [Tweezers](#) (1)
-

Step 1 — Battery Removal



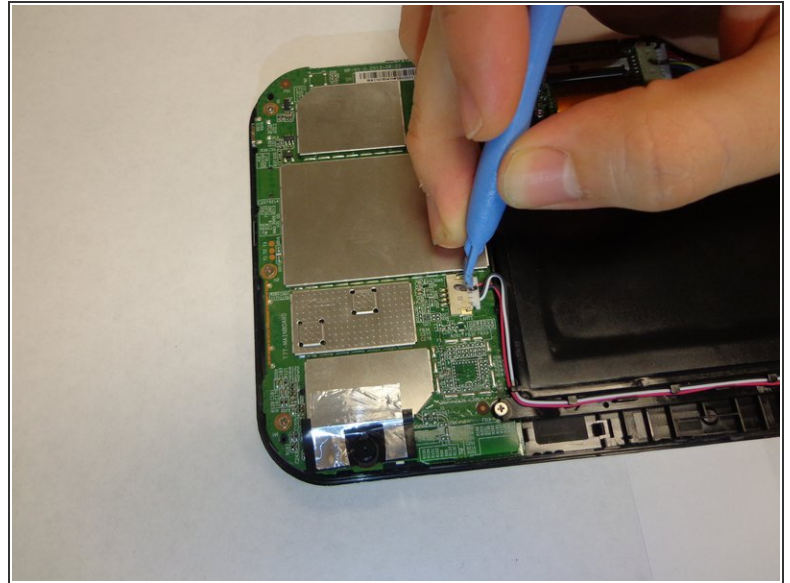
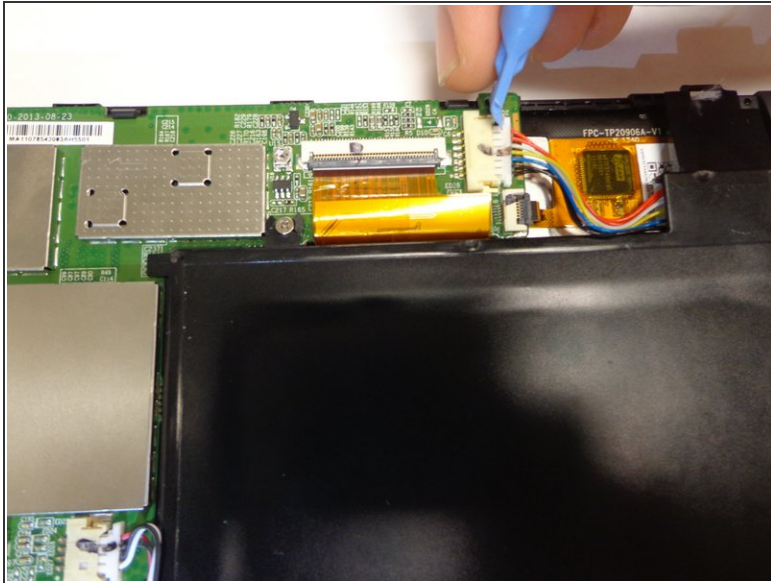
- Remove the back cover.
- Work your fingernail or flat object under the cover's seal. Start at the top right corner just above the front facing camera this is the device "Weak Spot".
- After you pry open the first clip slide the flat object along the perimeter of the cover until the cover is removable. You should hear the clips pop open.

Step 2 — Remove Tape



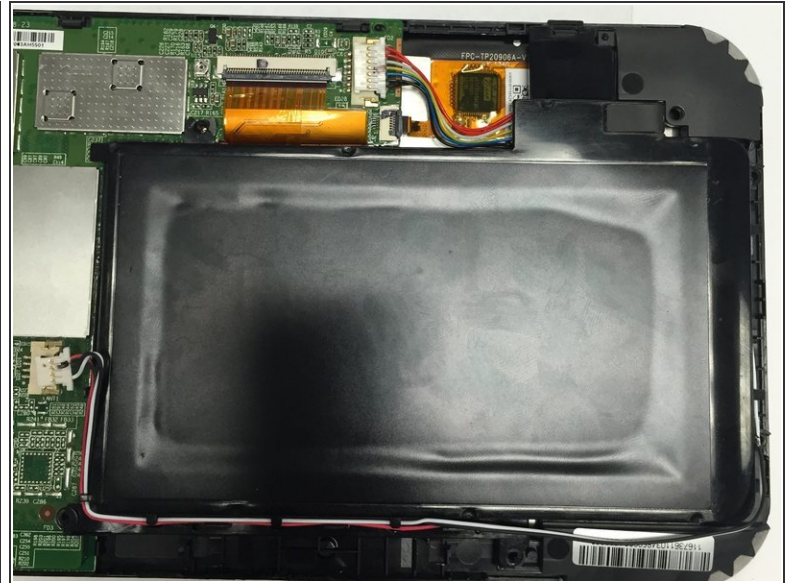
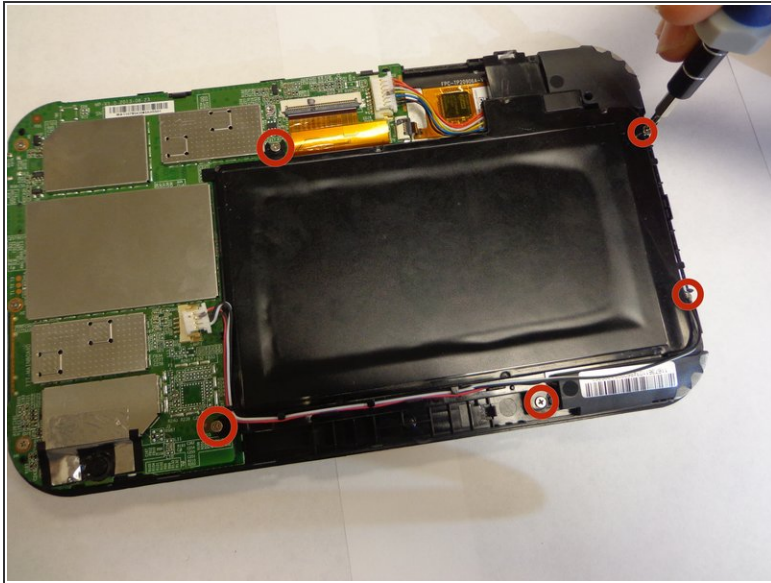
- Remove any black tape from the device.
- Keep the tape, you will need to put it back on when you are done.

Step 3 — Unplug Wires



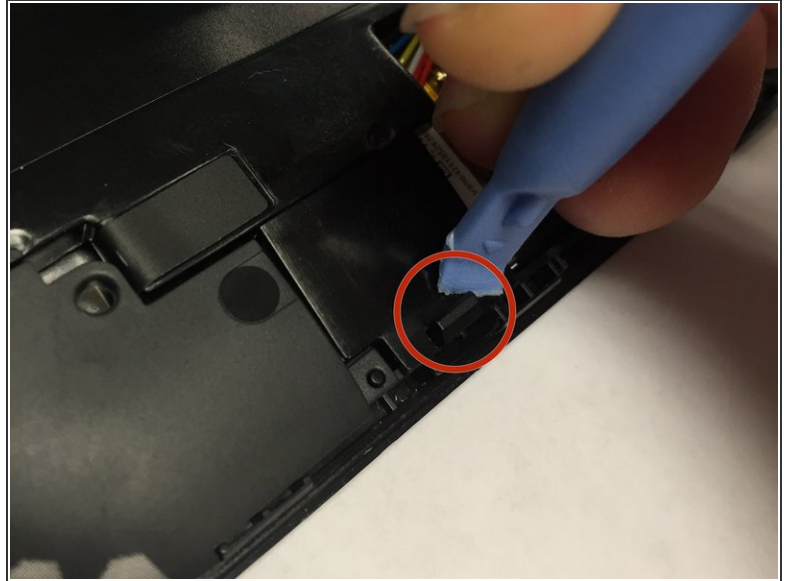
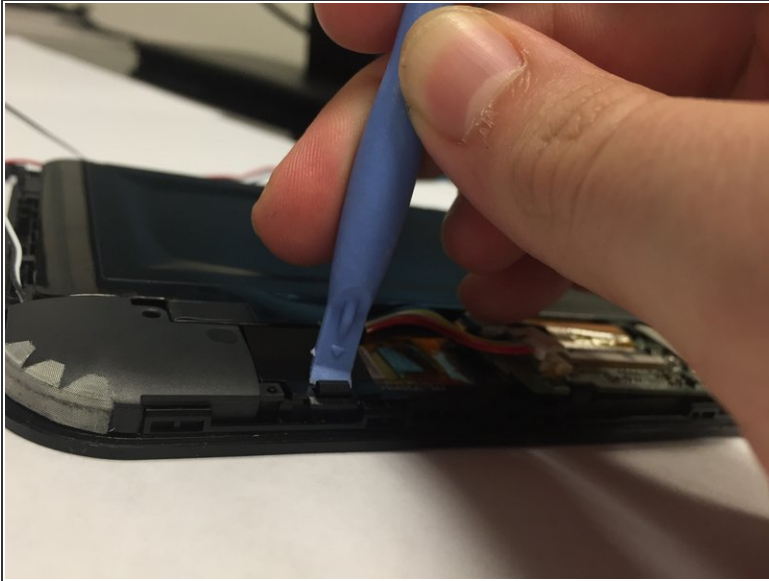
- Unplug the wires from the battery.
- ⓘ The battery is the black rectangle in the middle of the device. The device has two wiring harnesses attached to it, one just above the battery and one just to the right.

Step 4 — remove screws



- Unscrew the battery from the device.
- The device has 5 screws to remove, keep the screws.

Step 5 — Unclip and remove battery



- i** The battery has one clip you will need to remove. The clip is located at the bottom right corner of the battery just above the right speaker. The speakers and wires are not secured to the battery, they may fall off.
- Push the clip back then lift the battery up.

To reassemble your device, follow these instructions in reverse order.