



# INTRODUCTION

How to replace the PRAM Battery



## TOOLS:

- [Phillips #2 Screwdriver](#) (1)



## PARTS:

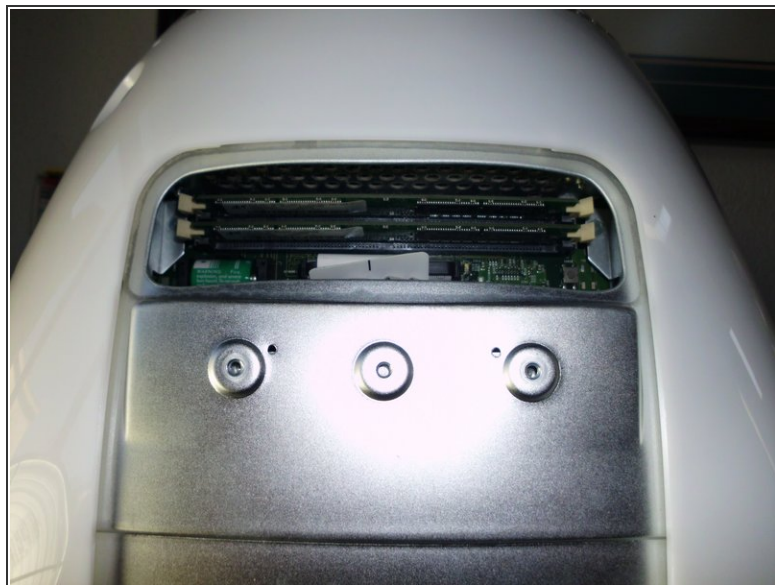
- [3.6 Volt .5 AA Lithium Battery](#) (1)

## Step 1 — PRAM Battery



- Lay a towel (to protect the screen) on your work area and place the unit face down with the bottom facing you.

## Step 2



- The access panel is held in place by one Phillips screw. Unscrew it.
- Unplug the machine after touching the metal housing to prevent ESD (electro static discharge)

### Step 3



- The battery is located just to the left and below the RAM slots.
- Note the positive is to the right and negative to the left. There is a + sign located on the logic board to the right of the battery.
- Care must be taken when removing the battery to prevent it dropping into the machine. It pulls straight out. Use a small instrument like a dental pick or flathead screwdriver to lift the + end out. I use a large hemostat to hold the battery.
- After removal of the old battery and replace with a new one by pressing it into place.
- Replace the access panel. Turn it over and plug it in. Start up and go under the Apple to System Preferences - System - Date & Time. If you have an internet connection check the box to automatically and select Apple Americas.
- If no internet just set the date and time manually.
- Next select the Time Zone box. Click the cursor on the map to the closest city to you.
- Next click the Clock box and select the type of display you prefer.

To reassemble your device, follow these instructions in reverse order.