



eMac AirPort Card Replacement

Replace the AirPort card in your eMac.

Written By: mayer



INTRODUCTION

This machine uses the:

Apple 630-2883 Original APPLE-MAC Airport 802.11B Wireless Card from the 700 MHz machine through the eMac (ATI Graphics). After that it uses the Apple M8881LL/A AirPort Extreme Card.

TOOLS:

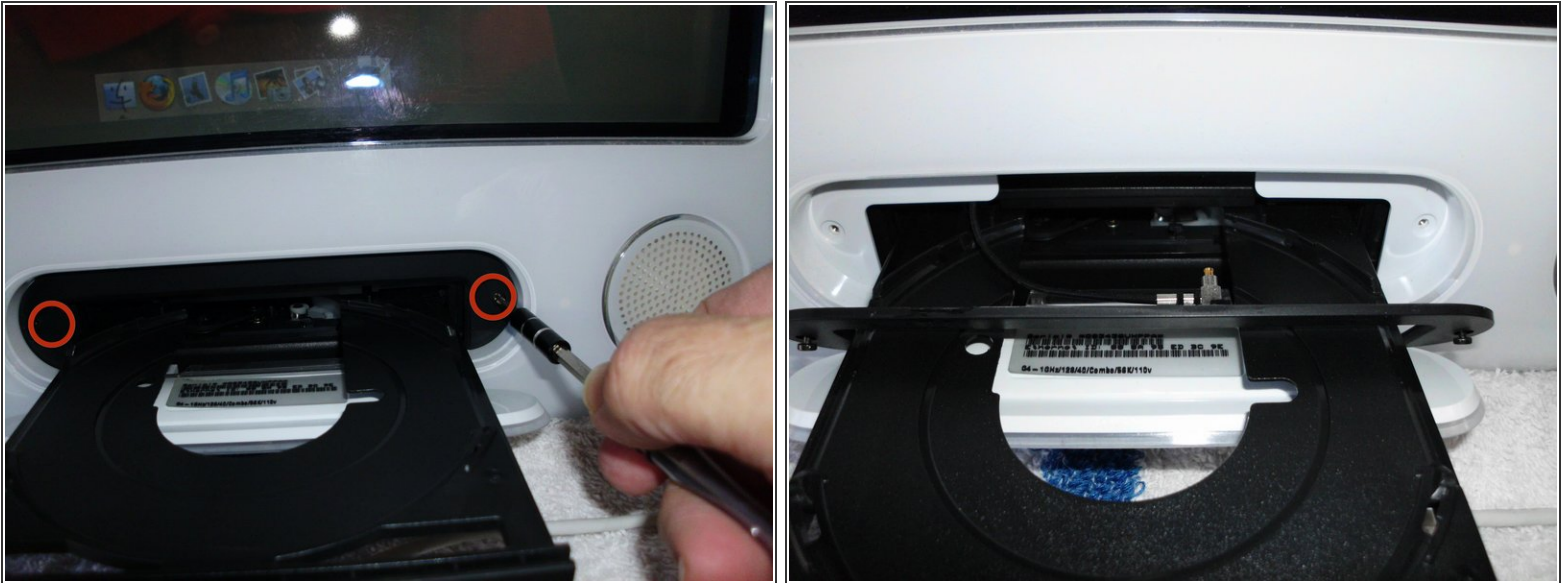
- [Phillips #2 Screwdriver](#) (1)

Step 1 — AirPort Card



- Installation of the AirPort Card on this machine is very easy.
- ⓘ The AirPort slot is located just above the Optical Drive in the front of the unit. It is covered by a small plastic panel.

Step 2



- Press the eject arrow located on the upper right corner of your keyboard. Once the optical drive tray is open, gently hold it and shut down the machine.
- Remove the two Phillips screws located to the right and left sides of the optical drive tray.
- ⓘ The AirPort cable is snapped into place on the back of the optical drive panel .
- Gently remove the panel from the front of the eMac
- Disconnect the AirPort cable from the optical drive panel.
- Pull the AirPort card straight away from its socket in the eMac.

Step 3



- Slide the new AirPort card into the slot until its firmly seated.
- Reconnect the AirPort cable to the optical drive panel.
- Reattach the optical drive panel and restart the eMac.
- ⓘ To configure the AirPort card, go under the Apple in the upper left hand corner to System Preferences - Network. The AirPort option should be on the left hand window. Select it.
- ☑ It should set up on its own. If not hit the "Assist Me" box on the bottom of the page.

To reassemble your device, follow these instructions in reverse order.