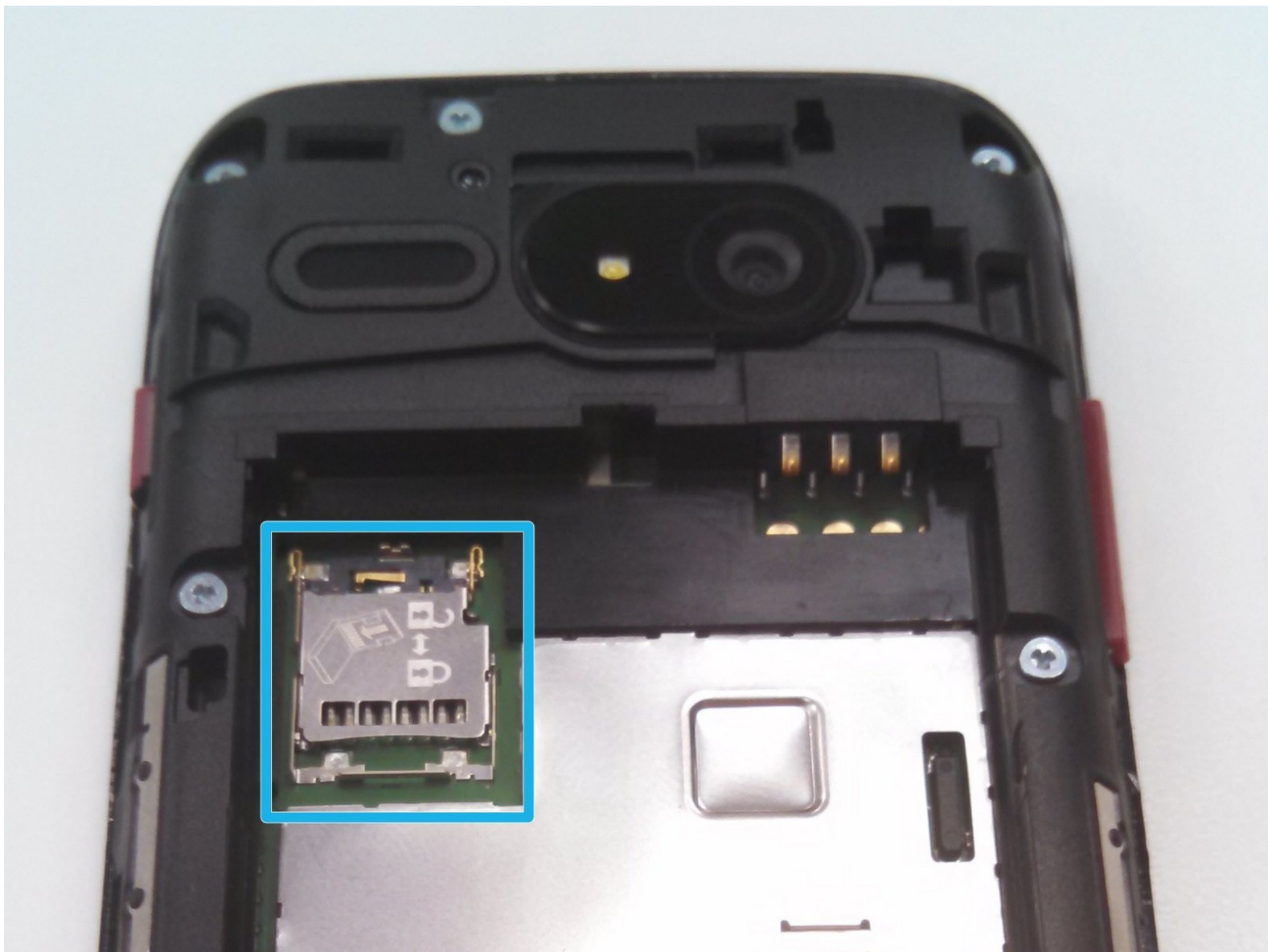




Kyocera Event MicroSD Card Replacement

This guide will show you how to remove and replace the microSD card for the Kyocera Event mobile phone.

Written By: graysonmensah



INTRODUCTION

The optional microSD memory card expands your phone's available storage so you can save more images, videos, music, documents, and voice data. If you need more storage or if you suspect your card is faulty, follow this guide to swap it out.

Step 1 — Battery



- Locate the small notch on the bottom right side of the phone.
- To remove the cover, hook your thumb or fingernail into the slot. Then, gently lift the cover up and off.
- ⓘ The back cover may flex slightly as you remove it. This is normal, but avoid applying excessive force.

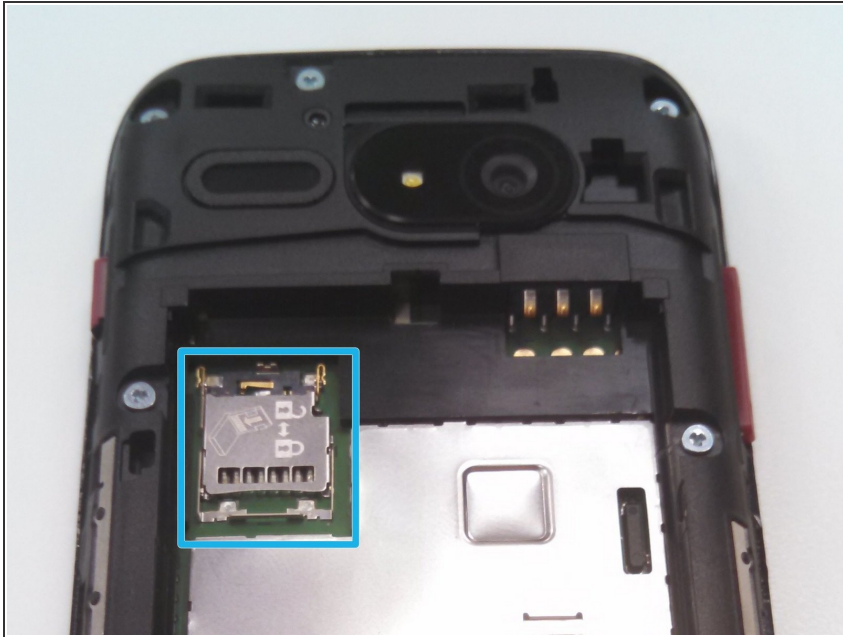
Step 2



- Locate the small notch below the battery. You may see a white plastic notch sticking out of this space; if so, grasp that tab to pull the battery out of its compartment. If you do not see a white plastic tab, then place your fingernail in the notch and pull upward to release the battery from its compartment.

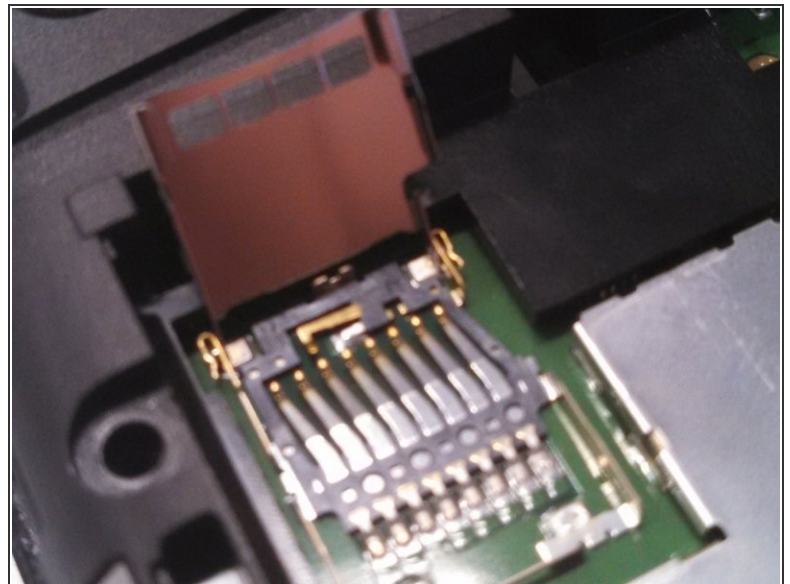
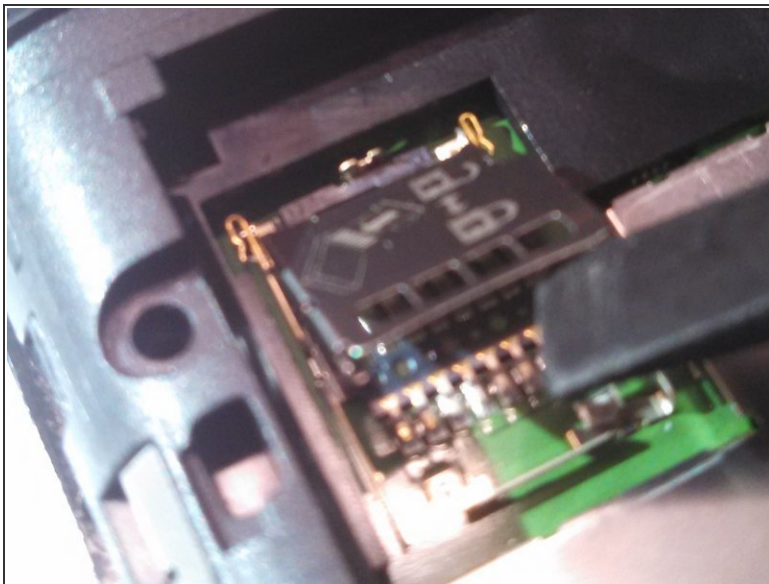
- ⓘ The plastic prying tool can be used to help remove the battery.

Step 3 — Locate the SIM card



- The SIM card slot can be seen in the middle left of the photograph.

Step 4 — Open slot and remove card



- The SD card slot can be opened and closed, as depicted by the tool.
- The SD card itself slides into and out of the metal cover.

i The gold tipped tines are what read the SD card along its bottom.

To reassemble your device, follow these instructions in reverse order.

This document was last generated on 2019-03-07 08:59:39 PM.