



iPod 1st Generation Battery Replacement

Written By: iRobot



INTRODUCTION

Battery not lasting long? Swap it out.



TOOLS:

- [iFixit Opening Tools](#) (1)



PARTS:

- [iPod 1/2G Replacement Battery](#) (1)

Step 1 — Rear Panel



- ⓘ Before opening your iPod, ensure that the hold switch is in the locked position.

Step 2



- ⓘ Opening the iPod can be challenging; don't get discouraged if it takes you a few tries to get the iPod to open.
- Insert a plastic iPod opening tool in the seam between the white plastic front and metal back of the iPod. It helps to hold the iPod at top and bottom as shown and squeeze to help pop out the edge. Once you've inserted the tool, run it along the seam to free the five tabs holding the iPod together.

Step 3



- Continue to run the opening tool along the side of the case until all five tabs have been released.

Step 4



- Work around the corner of the iPod and release the two tabs holding the iPod together near the dock connector.

Step 5



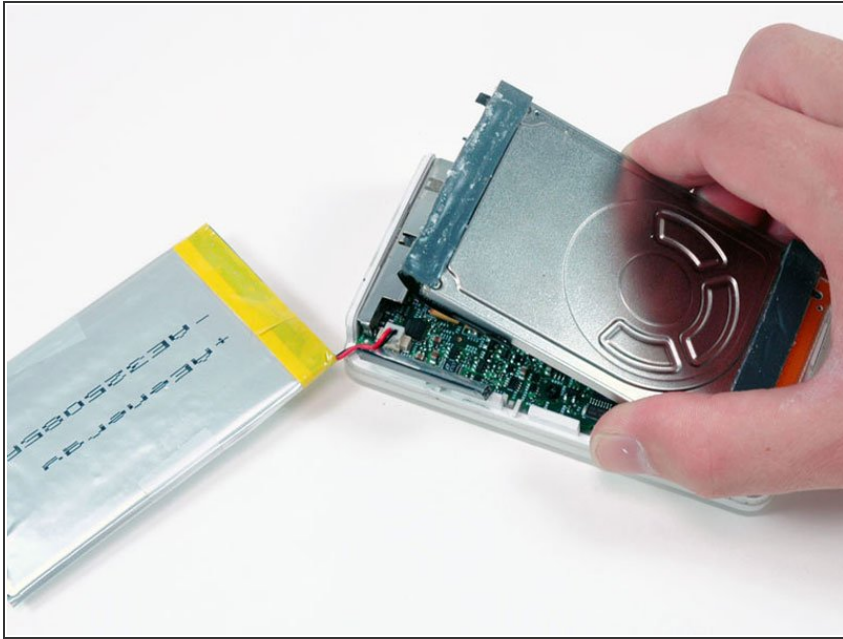
- Free the five tabs holding the iPod together on the other side. You may be able to free the tabs by gently wiggling the front panel of the iPod.
- Lift the rear panel away from the iPod.

Step 6 — Battery



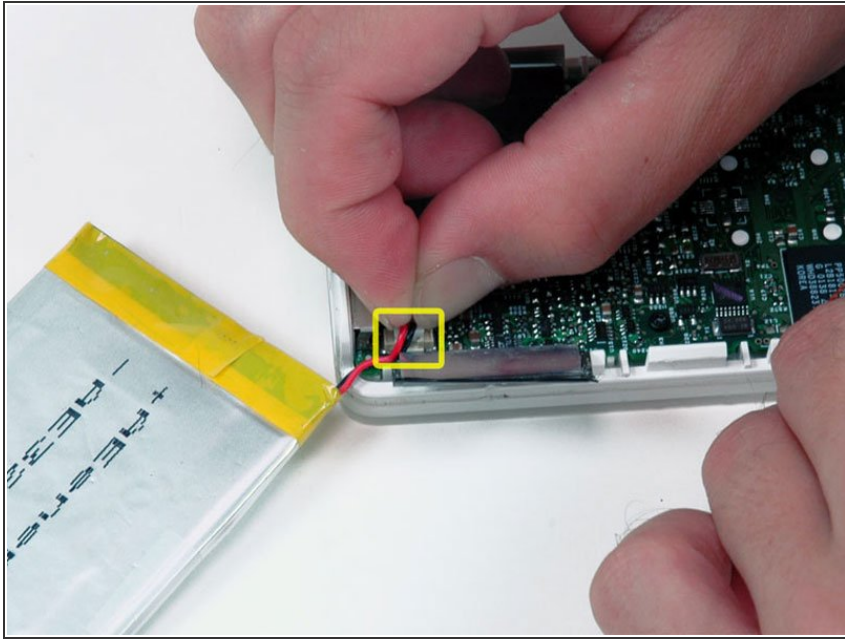
- Lift the battery up from the adhesive holding it to the iPod.
- Lay the battery next to the iPod (it is still connected to the logic board).

Step 7



- Lift up the end of the hard drive near the Firewire port to allow easy access to the battery connector.

Step 8



- Carefully disconnect the white battery connector from the logic board. Be sure to pull only on the connector itself and not on the cables.

To reassemble your device, follow these instructions in reverse order.