



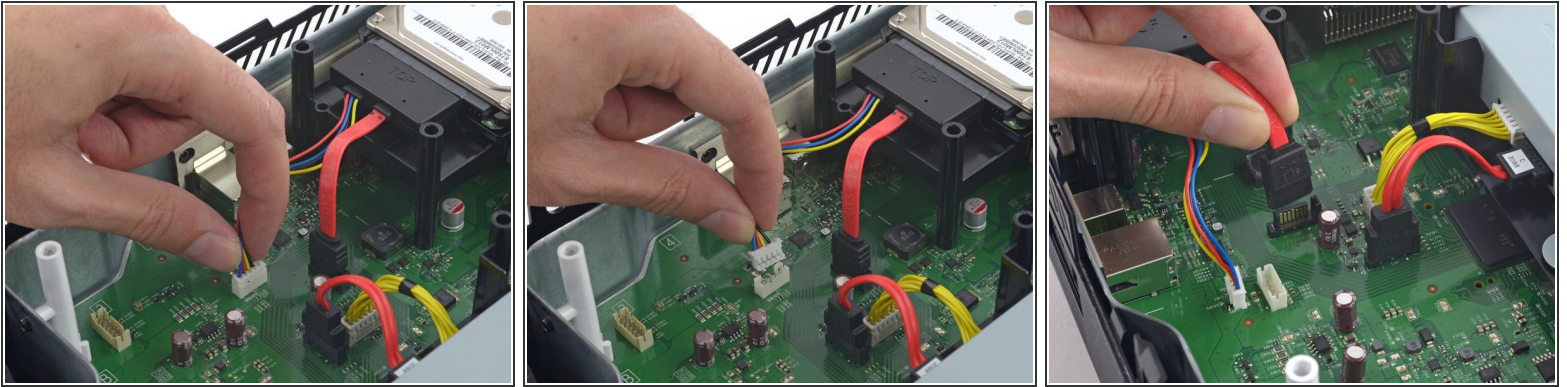
Xbox One Hard Drive Assembly Replacement

Prereq for hard drive removal and for fan/motherboard

Written By: Andrew Optimus Goldheart

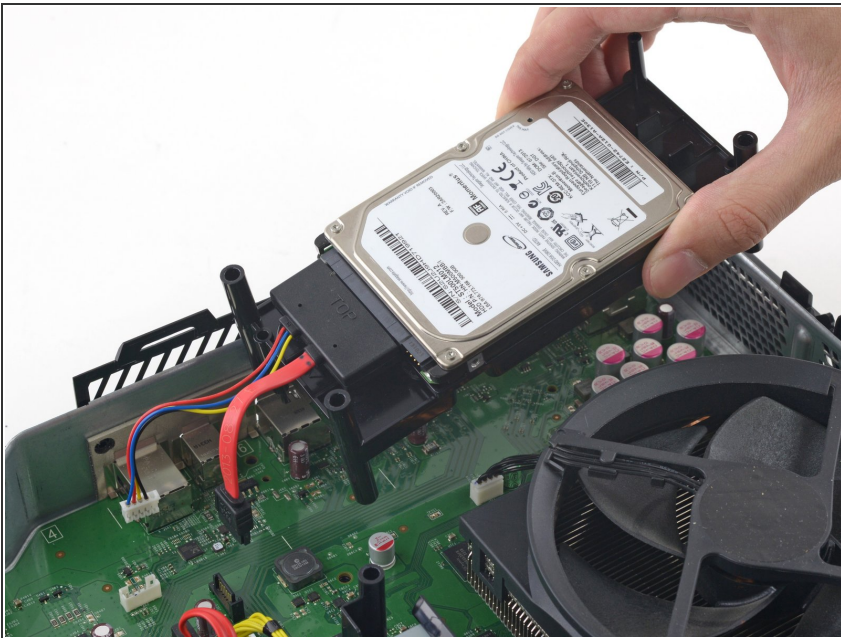


Step 1 — Hard Drive Assembly



- Disconnect the hard drive SATA power and data cables from the motherboard.

Step 2



- Lift and remove the hard drive tray from the Xbox.

To reassemble your device, follow these instructions in reverse order.