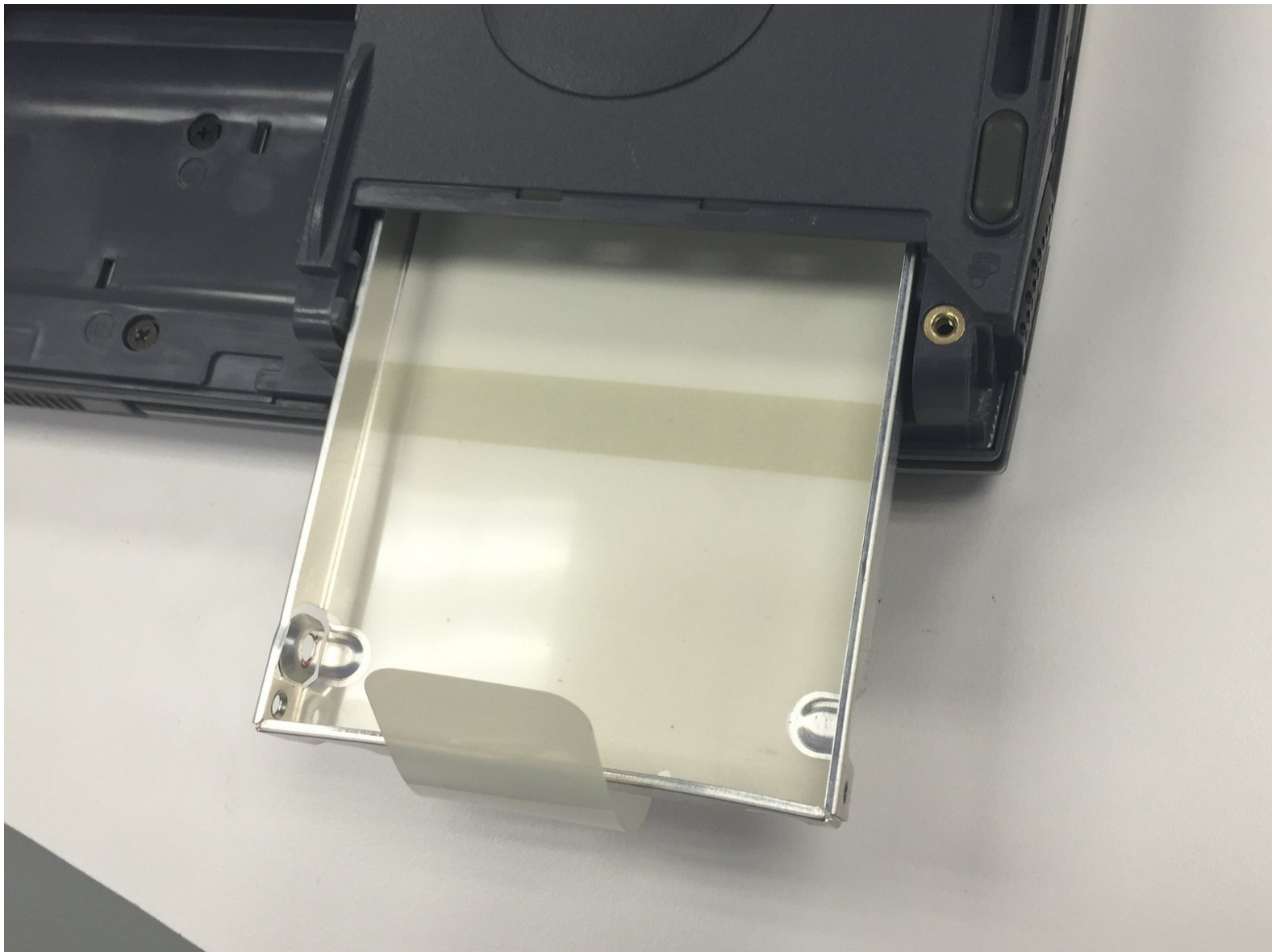




Toshiba Tecra 8200 Hard Drive Replacement

This guide will show you how to replace the hard drive of a Toshiba Tecra 8200.

Written By: Sally



INTRODUCTION

If your Toshiba Tecra 8200 is running slowly or you are unable to save documents, your hard drive may need replacement.



TOOLS:

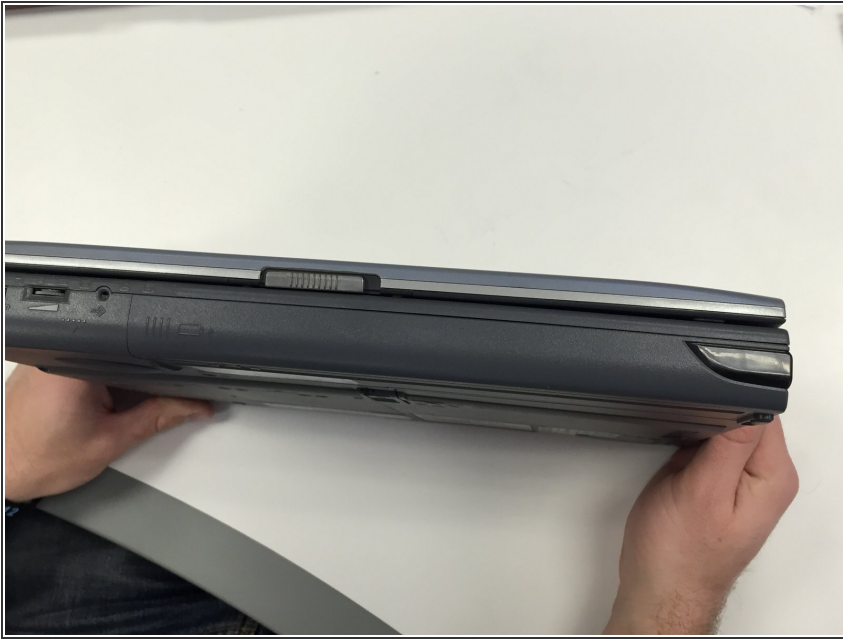
- [Phillips #00 Screwdriver](#) (1)



PARTS:

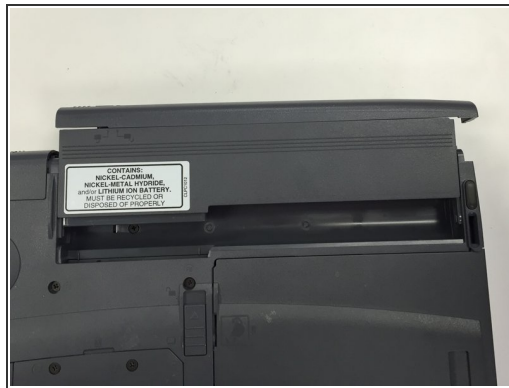
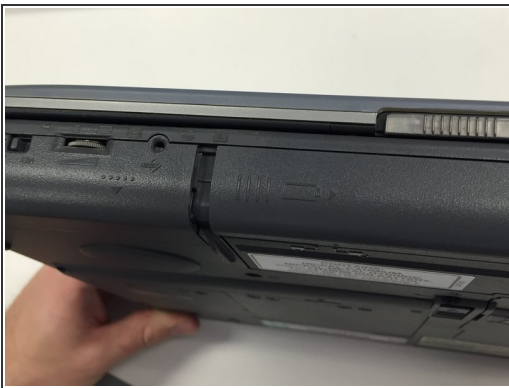
- [Toshiba Tecra 8200 Replacement Hard Drive](#) (1)

Step 1 — Battery



- ⚠ Turn off the device and unplug the power cord.
- To remove the battery, flip the device, so that the bottom is facing upward.

Step 2



- Slide the battery to the right side until you hear a click.
- Carefully remove the battery from its compartment.

Step 3 — Hard Drive



- Locate the hard drive panel.
- Remove the single screw labeled F4 by using a Philips size #00 screwdriver.
- Save the screw, as it will be needed for reassembly.
- Remove the panel, exposing the hard drive.

Step 4



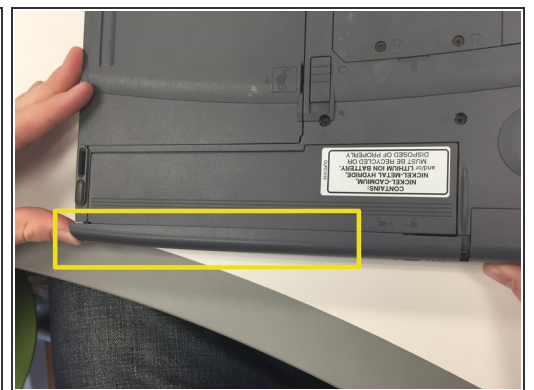
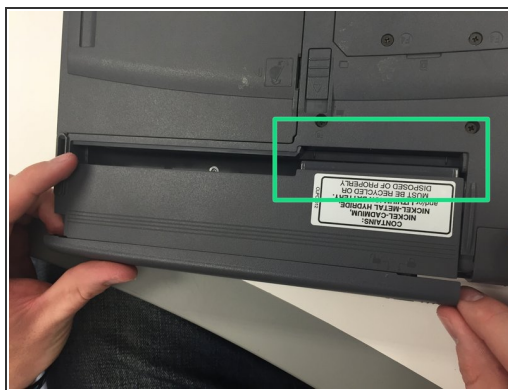
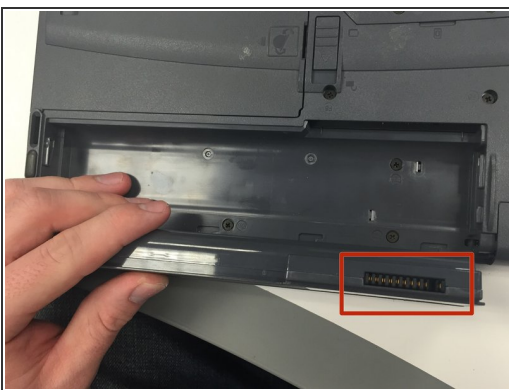
- Pull the tab to remove the hard drive.
- Insert the new hard drive by pushing it into the compartment, leaving the new "pull" tab exposed.

Step 5



- Tuck the "pull" tab back into the hard drive compartment.
- Replace the panel.
- Replace the single F4 screw.

Step 6



- Identify the connector pins on the battery.
- Line up the connector pins on the battery with the connector pins on the computer and push inward to reconnect the battery.
- Slide the exterior panel towards the center of the computer to lock the battery in place.

