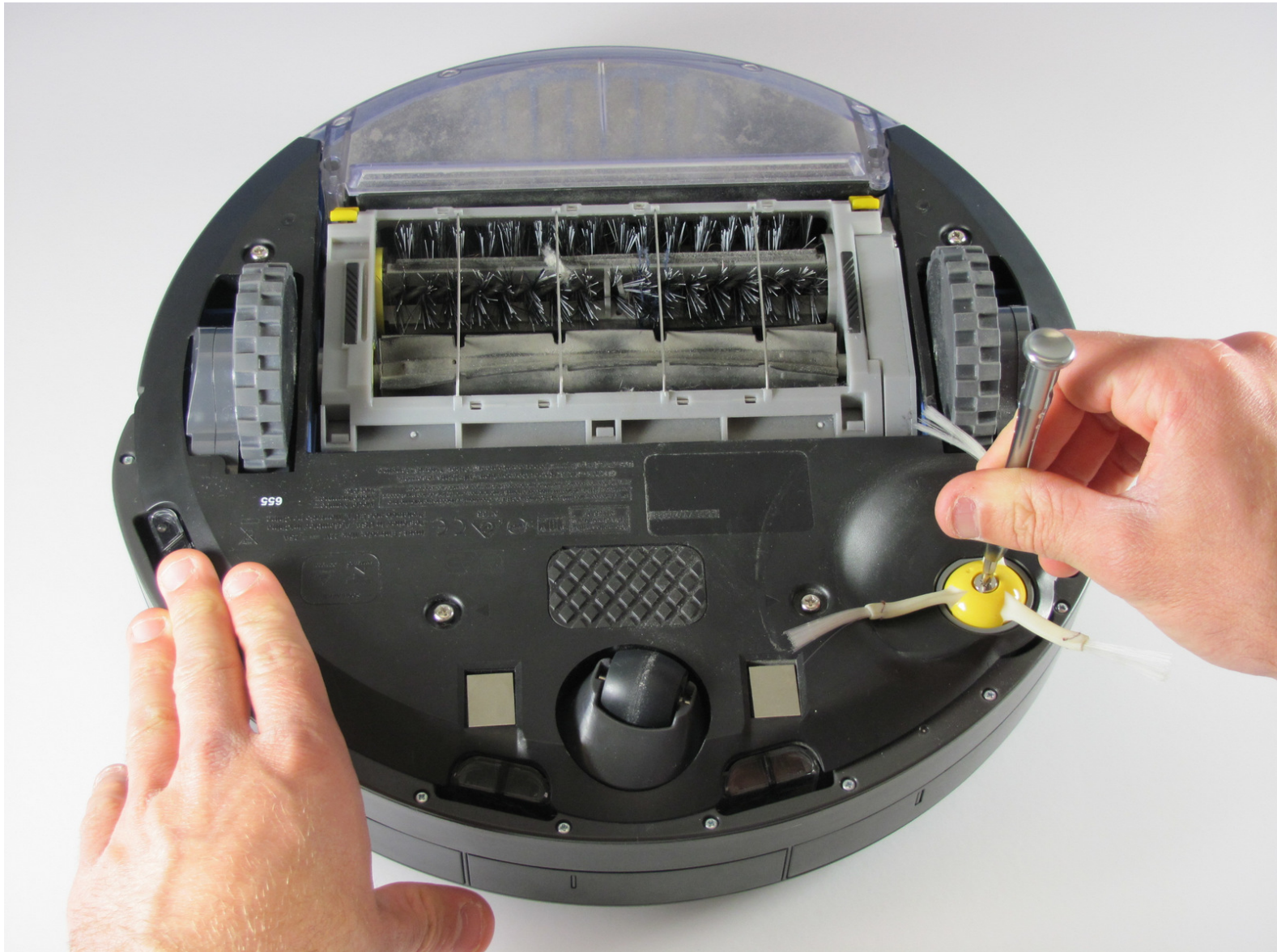




iRobot Roomba 655 Pet Series Side Brush and Back Panel Removal

How to remove the side brush and back panel of your Roomba

Written By: Matt Davis



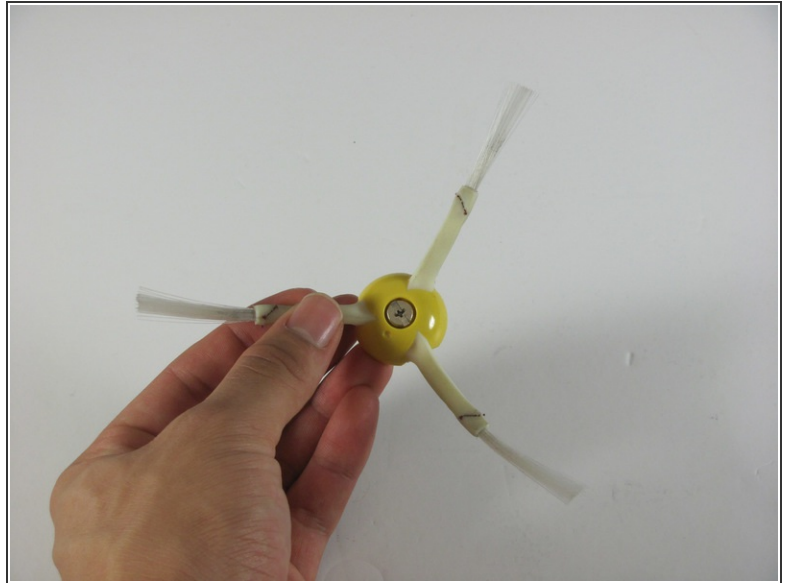
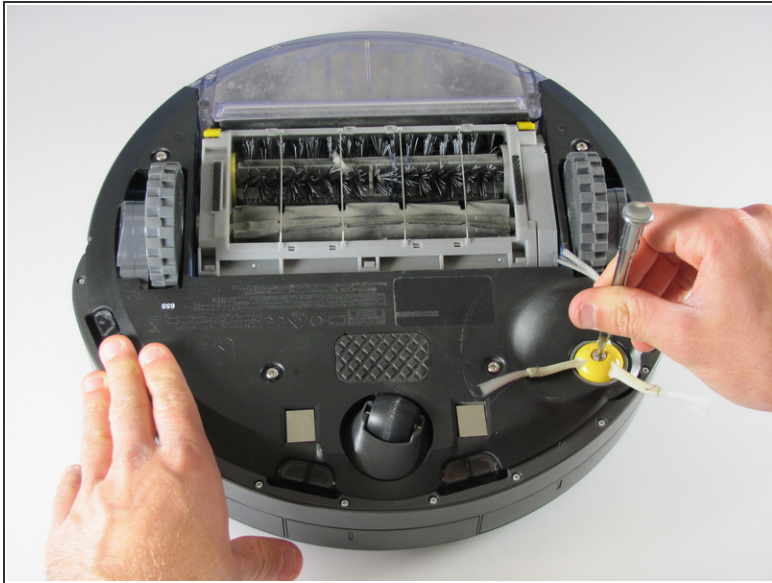
INTRODUCTION

You will be removing the yellow side brush and the back panel of your Roomba in order to gain access to other components of your device.

TOOLS:

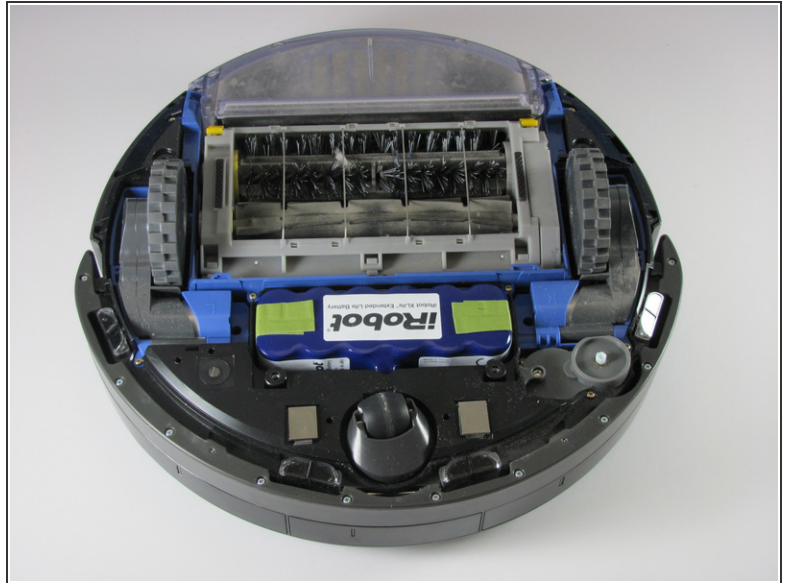
- [Phillips #2 Screwdriver](#) (1)
 - [Phillips #1 Screwdriver](#) (1)
-

Step 1 — Removing the Side Brush



- Flip the device over onto its back
 - Find the side brush, and unscrew the single screw that connects to brush motor by using the Phillips head #2 screwdriver
- i** *This screw doesn't completely come out of the yellow side brush*

Step 2 — Removing the Back Panel



- Locate and Remove the four screws on the back panel by using Phillips #1
 - Once the screws are loose gently pry the back plate away from the body by using the spudger tool.
- i** *The screws don't completely come out of the panel, but it will still come apart once unscrewed.*

To reassemble your device, follow these instructions in reverse order.

This document was last generated on 2018-10-16 02:05:21 PM.