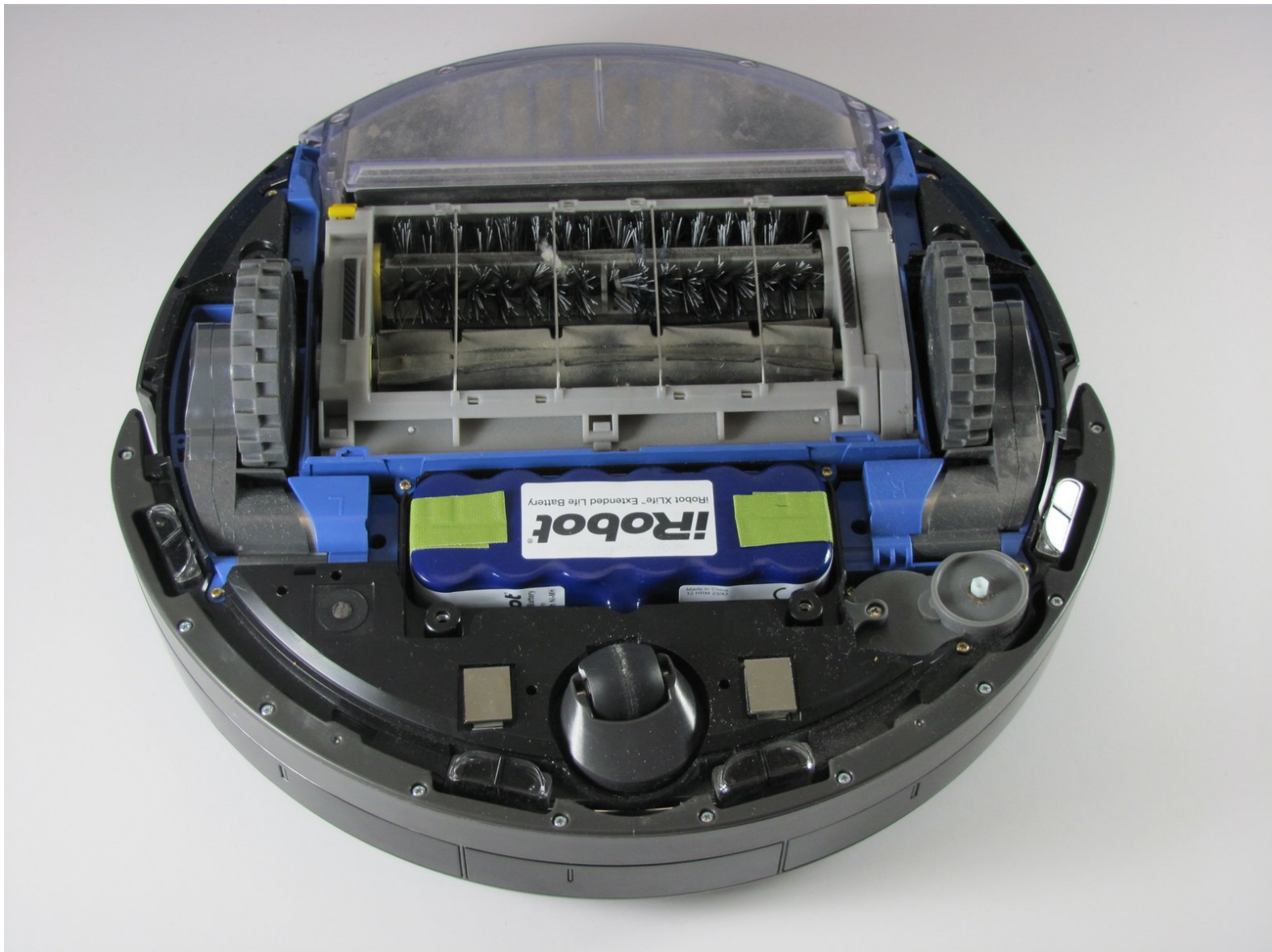




# iRobot Roomba 655 Pet Series front caster wheel replacement or maintenance

You will be removing the back plate of the iRobot Roomba 655 Pet Series, and taking off the front caster wheel in order to clear the Roomba of debris.

Written By: Rhett



---

## INTRODUCTION

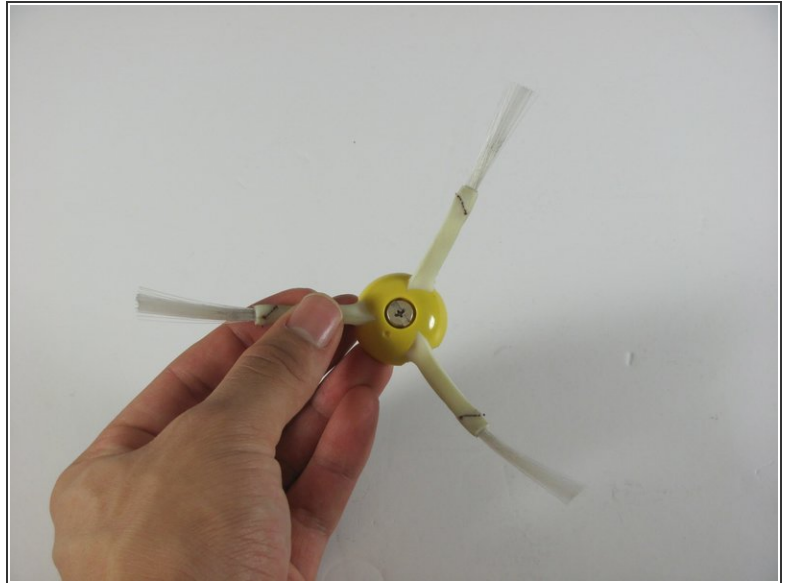
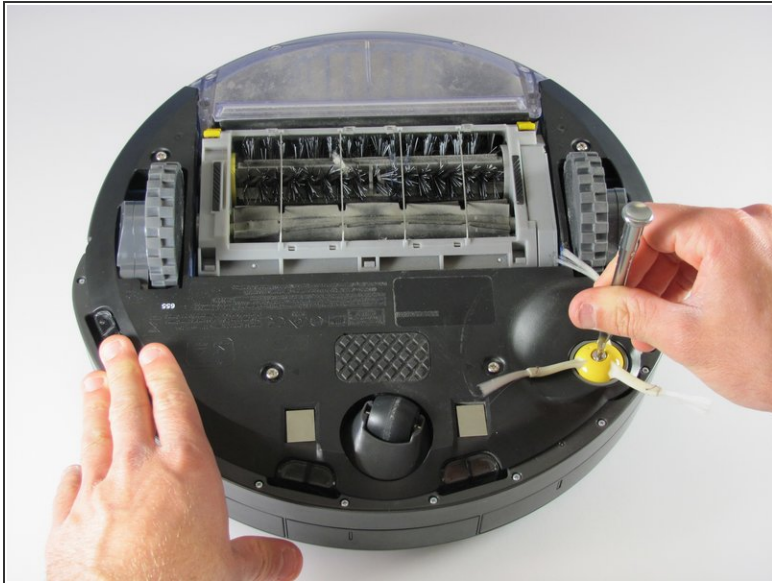
The front caster wheel is the wheel that leads the Roomba over all of the dirt and debris so that the vacuum can pick it up. As a result, the caster wheel easily becomes dirty. The purpose of this guide is to show you how to take out the caster wheel so that it can be cleaned and restored to a satisfactory condition.

---

### TOOLS:

- [Phillips #1 Screwdriver](#) (1)
  - [Phillips #2 Screwdriver](#) (1)
  - [Spudger](#) (1)
-

## Step 1 — Removing the Side Brush



- Flip the device over onto its back.
  - Find the side brush, and unscrew the single screw that connects to brush motor by using the Phillips head #2 screwdriver.
- i** *This screw doesn't completely come out of the yellow side brush.*

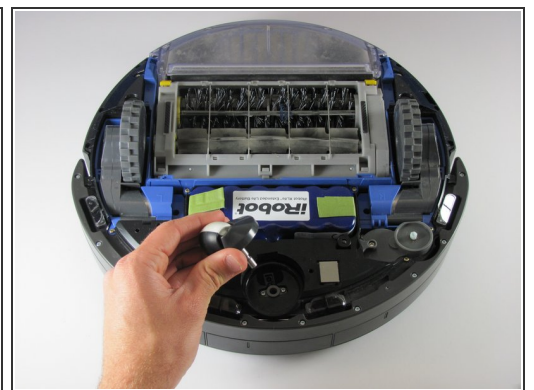


## Step 2 — Removing the Back Panel



- Using a Phillips #1 screwdriver, remove the four screws on the back panel.
  - Once the screws are loose gently pry the back plate away from the body by using the spudger tool.
- i** *The screws don't completely come out of the panel, but it will still come apart once unscrewed.*

## Step 3 — Removal of Caster Wheel Housing



- Turn the Roomba upside down, so that the vacuum and wheels are facing the ceiling.
- Hold the caster wheel housing steady, and insert the plastic spudger under the wheel housing.
- Apply some force to pry the caster wheel "straight up", and remove the caster wheel housing from the Roomba.

## Step 4 — Removing Wheel From Rotating Housing



- Firmly hold the caster wheel housing, and remove the caster wheel from its setting.
- Clean the caster wheel with soap and water.
- Once the caster wheel is clean and thoroughly dried, repeat the process in reverse order to reinstall the caster wheel back to the Roomba.

To reassemble the robot, follow these instructions in reverse order.