



# Samsung NX300 Back Panel Assembly Replacement

Remove the back panel that houses the LCD Screen, menu buttons, and record button.

Written By: Andres Perez



---

## INTRODUCTION

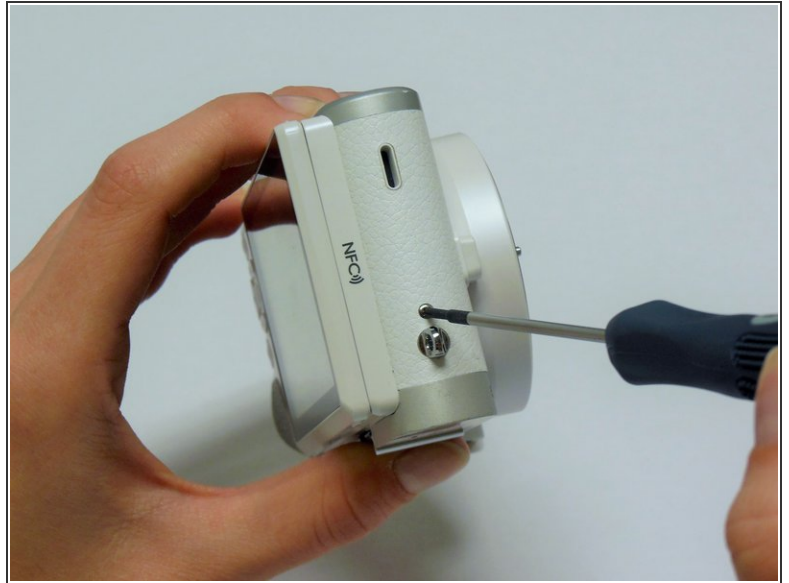
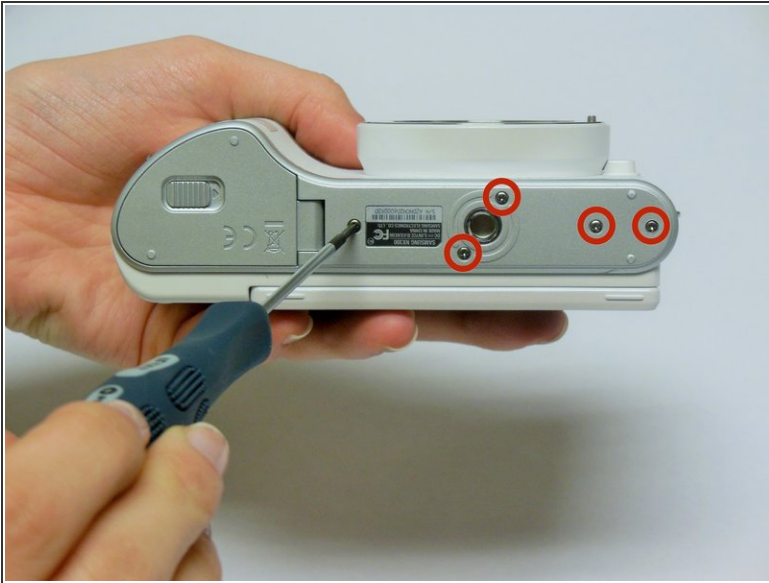
This guide will show you how to remove the back panel assembly, which houses the main control buttons and the LED display, allowing to replace its individual parts or access the internal parts of part of the camera.

---

### TOOLS:

- [Phillips #00 Screwdriver](#) (1)
  - [iFixit Opening Tools](#) (1)
  - [Tweezers](#) (1)
-

## Step 1 — Unscrew the Back Panel



- Using a Phillips #00 precision screwdriver, remove the seven 4mm screws (5 on the bottom of the device and 1 on each of the two sides) holding the back panel to the camera.

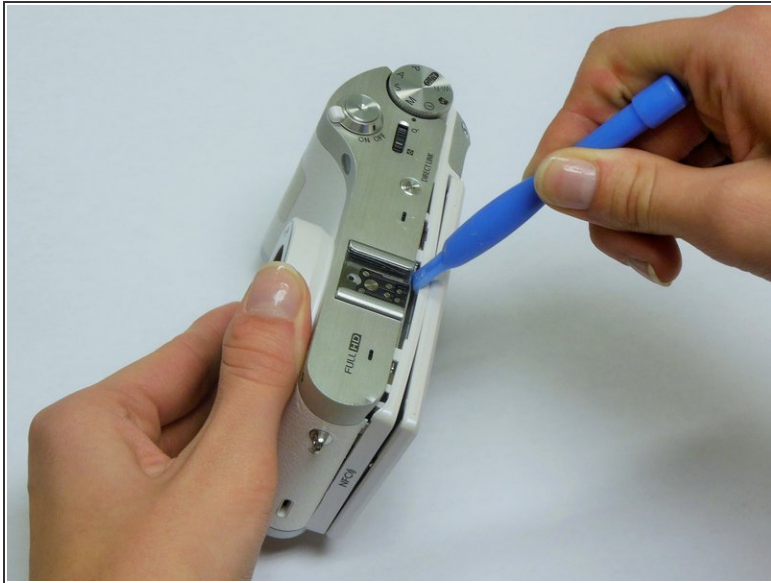
## Step 2 — Remove the Input Port Screw



- Using a Phillips #00 precision screwdriver, remove the last 4mm screw located inside the input ports' compartment.

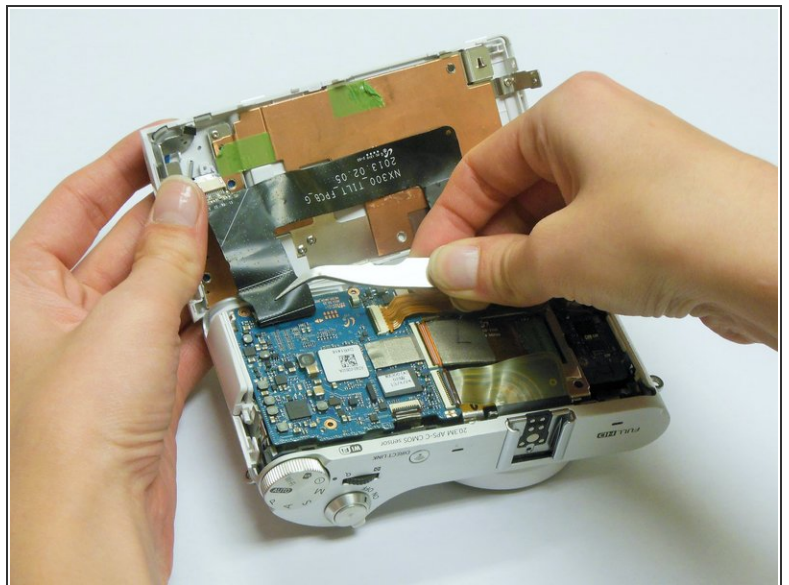


### Step 3 — Open the Camera Casing



- Place a plastic opening tool into the gap between the back panel and camera body, from both the top and the bottom of camera. Carefully pry open the camera and separate the back panel.

### Step 4 — Remove the Back Panel



- Using tweezers or your fingers, pull the display's black ribbon from the motherboard. This frees the back panel altogether.
- ⓘ To safely remove ribbons, you would need to first unlock the holding mechanism by lifting up the black strip atop the ribbon adapter.

To reassemble your device, follow these instructions in reverse order.

This document was last generated on 2019-07-16 12:05:22 AM.