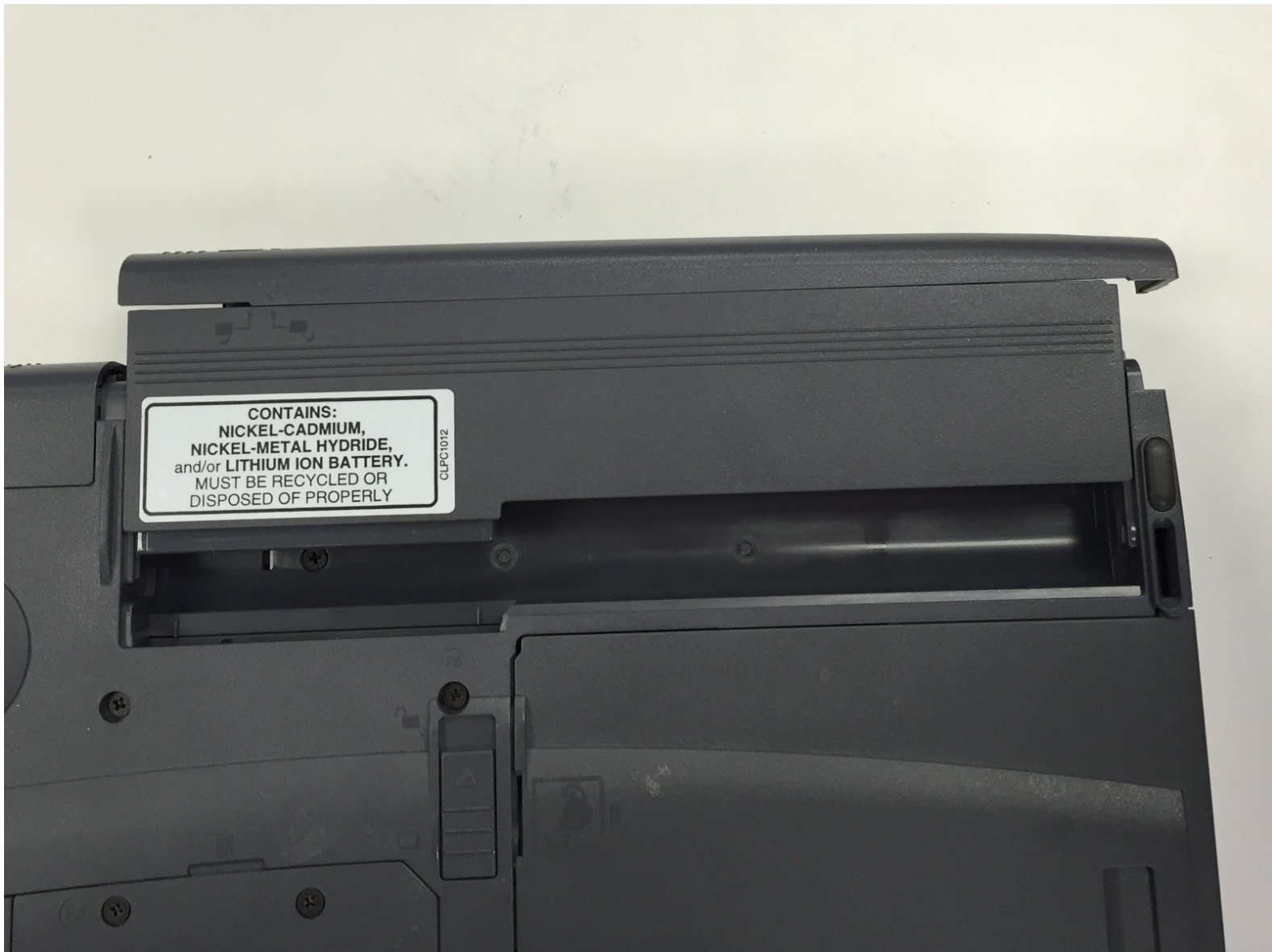




# Toshiba Tecra 8200 Battery Replacement

Follow these easy steps to remove the battery from Toshiba Tecra 8200.

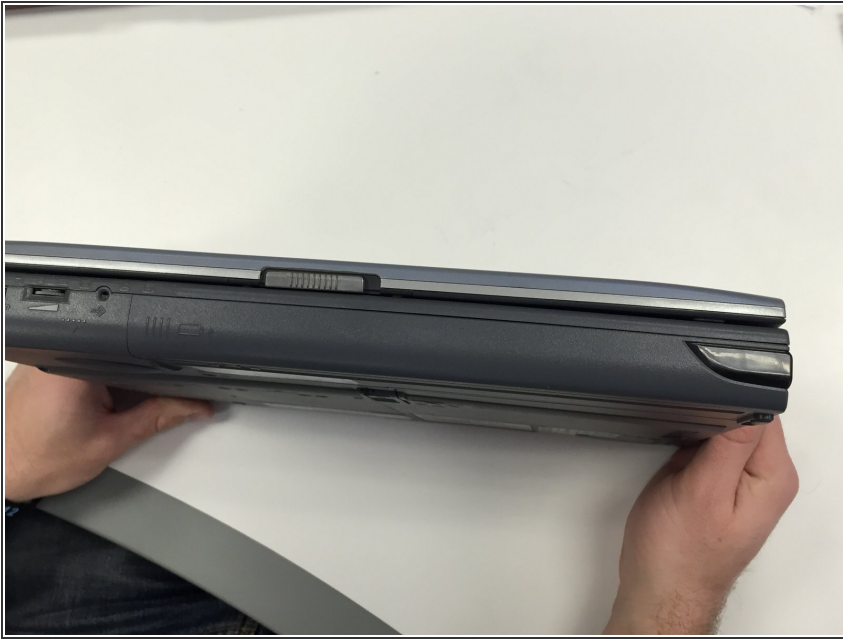
Written By: Sally



## INTRODUCTION

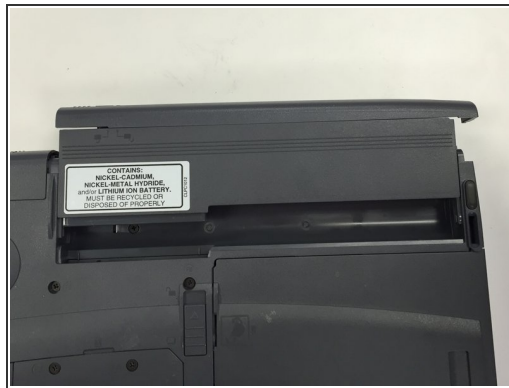
Follow these easy steps to remove the battery from Toshiba Tecra 8200.

## Step 1 — Battery



- ⚠ Turn off the device and unplug the power cord.
- To remove the battery, flip the device, so that the bottom is facing upward.

## Step 2



- Slide the battery to the right side until you hear a click.
- Carefully remove the battery from its compartment.

To reassemble your device, follow these instructions in reverse order.

This document was last generated on 2019-07-21 03:32:20 AM.