



Eclipse 180G2 MP3 Video Player Battery Replacement

Follow this guide if you want to replace the battery of your Eclipse 180G2 MP3 Video Player.

Written By: James Walker



INTRODUCTION

The battery packet of the Eclipse player is not inherently modular; it is wired directly to the circuit board. However, with soldering equipment and the know how to use it, if you snip the connecting wires allows for the easy replacement of the battery. Follow this guide if you want to replace the battery of your Eclipse 180G2 MP3 Video Player.

TOOLS:

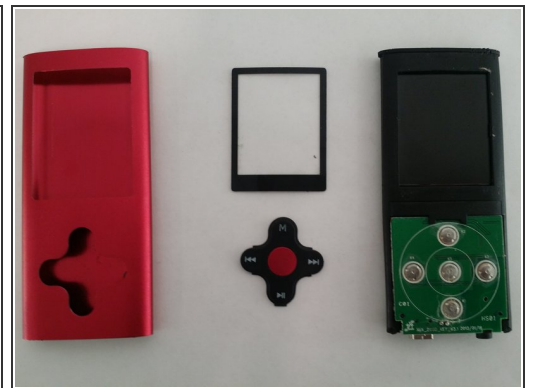
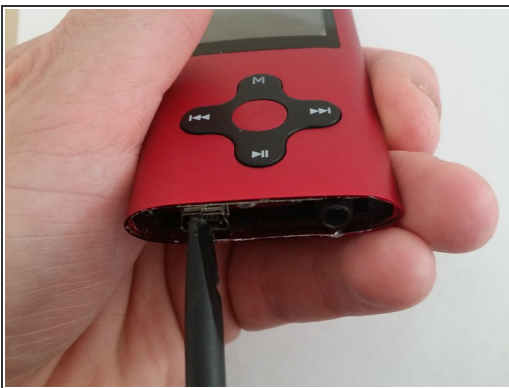
- [Spudger](#) (1)

Step 1 — Outer Case



- Remove the two screws on the bottom of the device with a Phillips head screwdriver.
- Use a spudger to remove the plastic plate from the bottom of the player.

Step 2 — Remove inner circuit from case shell



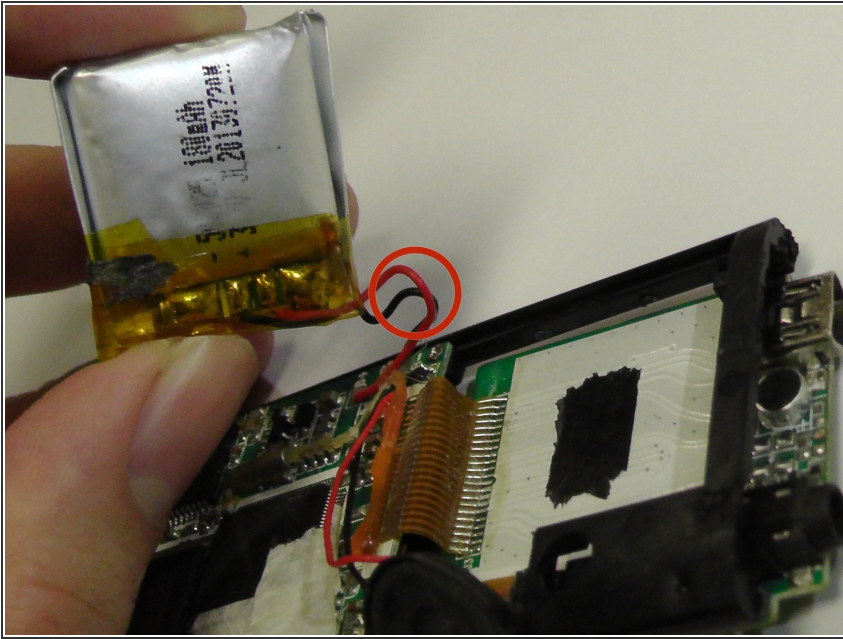
- Use the spudger to push the USB port on the bottom of the device inward.
- Hold the device firmly between two fingers. Be sure you aren't holding down the top of the device; the circuit board will slide out of the shell through that end.
- The plastic LCD cover and the key pad will now be free; they were held in place by the tension between the case and the internal circuit board.

Step 3 — Finding the Battery



- The battery is the large packet-like component beneath where the buttons would be.
- Gently lift it off of the circuit and move it off of the board, allowing access to the wires.

Step 4 — Separating the Battery



- Snip the wires using a wirecutter. Be careful not to nick the battery and cause battery acid to leak everywhere. That would be unfortunate.

To reassemble your device, follow these instructions in reverse order after you've soldered the new battery.