



Disassembling Optoma HD20 Cover

Need to remove cover to replace parts? Use this guide to remove the cover.

Written By: Trever



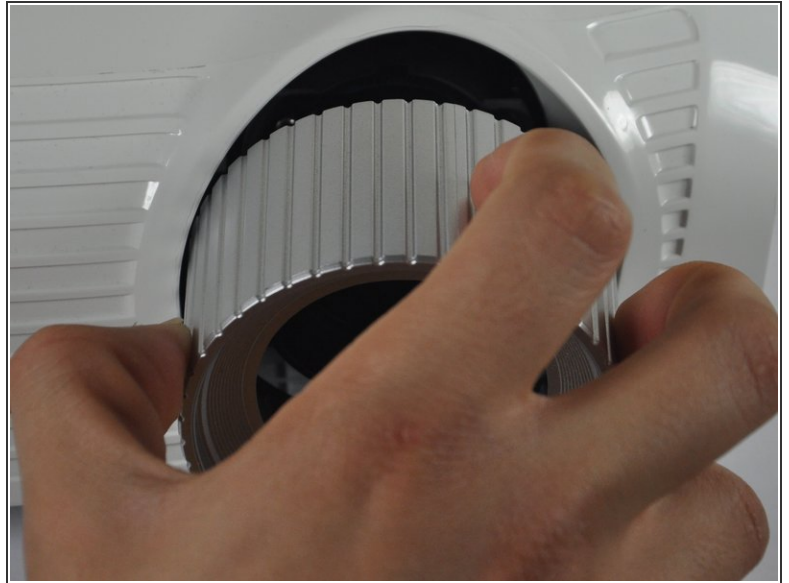
INTRODUCTION

Use this guide to remove the cover from your Optoma HD20.

TOOLS:

- [iFixit Opening Tools](#) (1)
 - [Phillips #1 Screwdriver](#) (1)
-

Step 1 — Disassembling Optoma HD20 Cover



- Twist focal cap clockwise until it is fully extended.
- Remove focal cap by pulling it straight out.

Step 2



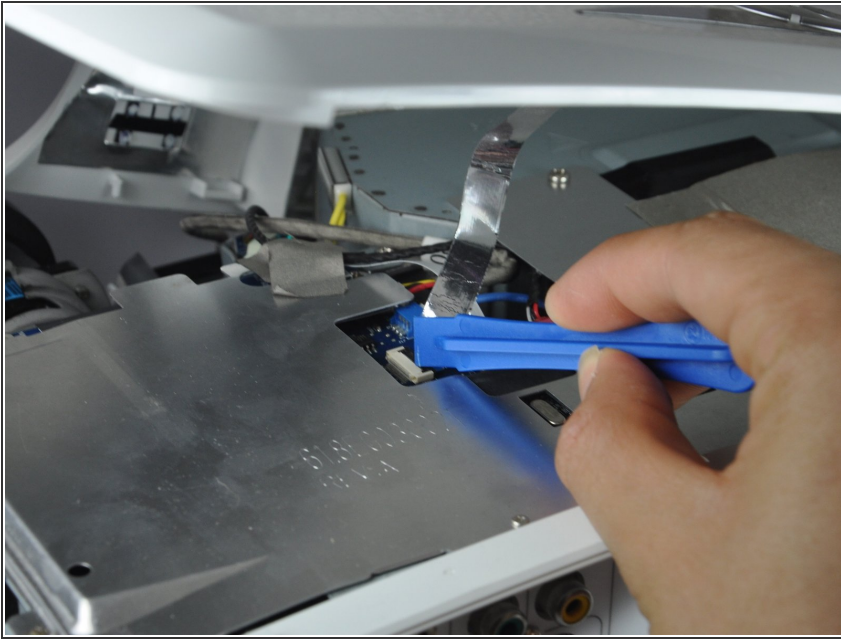
- Use a Phillips #1 screwdriver to remove the three 7.5mm screws on the bottom of the device.

Step 3



- Use a plastic opening tool to gently pry the top cover off of the device.
- ⓘ It is easier to pry off the cover from the back side just above the HDMI ports.

Step 4



⚠ When removing the cover, be cautious of the ribbon connecting the top buttons to the main circuit board. The ribbon must be disconnected before proceeding.

- Remove the ribbon by disconnecting it from the main circuit board.
- Lift up the clip holding it down and pull the ribbon out.

To reassemble your device, follow these instructions in reverse order.