



# Geardup RC Ford Mustang GT Car Shell Replacement

Use this guide to replace the shell on your GEAR'D UP RC Mustang GT.

Written By: Claudia Robinson



---

## INTRODUCTION

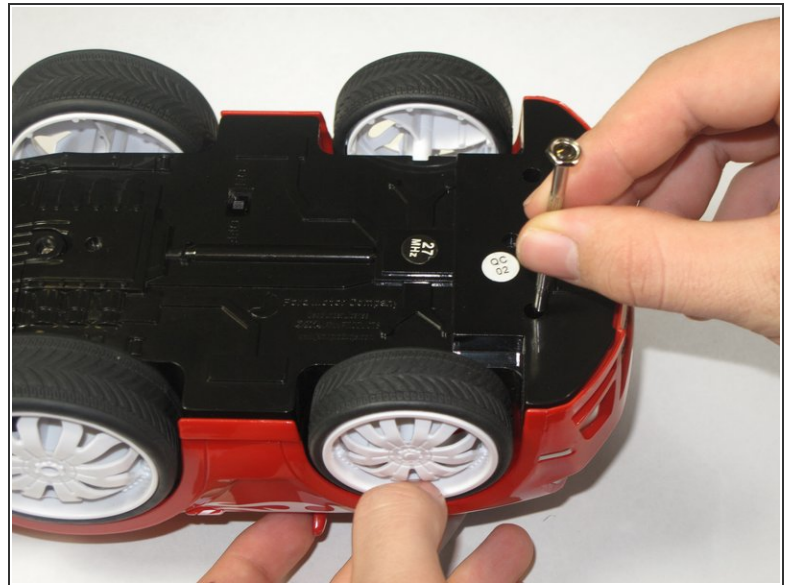
The shell on the RC Mustang GT is mostly a cosmetic component, giving the car the unique appearance associated with GEAR'D UP's RC cars. The following steps will show how to replace the shell of the car.

---

### TOOLS:

- [Phillips #0 Screwdriver](#) (1)
-

## Step 1 — Lower RC Car



- Flip the car over and remove the four 5mm Phillips #0 screws that hold the shell to the car chassis.

## Step 2 — Shell



- Flip the car over again to its upright position and vertically lift the shell from the car.
- ☑ During re-assembly, make sure the shell is correctly aligned. If it is not aligned correctly, it may rub on the wheels, possibly preventing them from turning.

To reassemble your device, follow these instructions in reverse order.