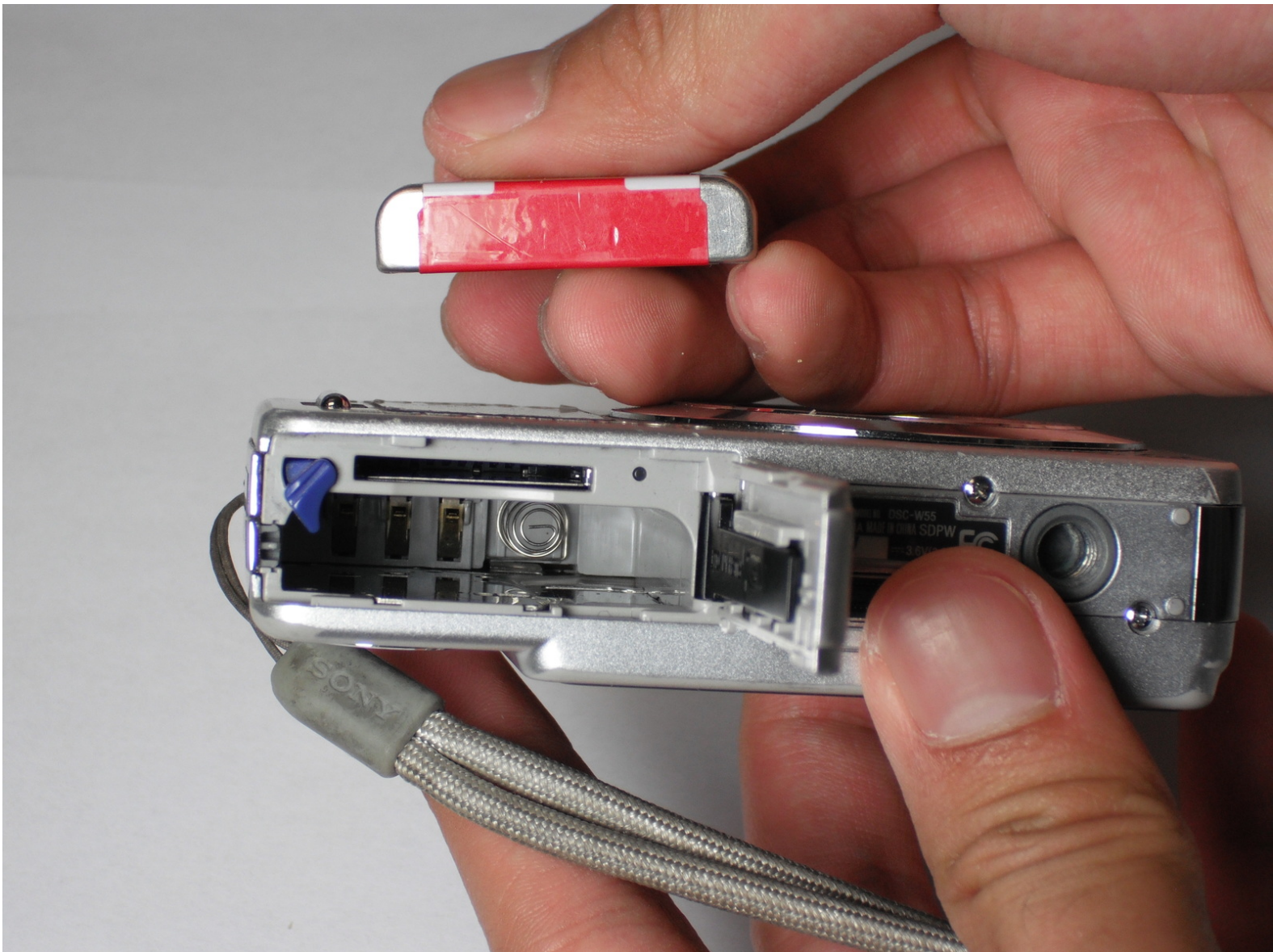




Sony Cyber-shot DSC-W55 Battery Replacement

This guide will show you how to replace the battery of the Sony Cyber-shot DSC-W55.

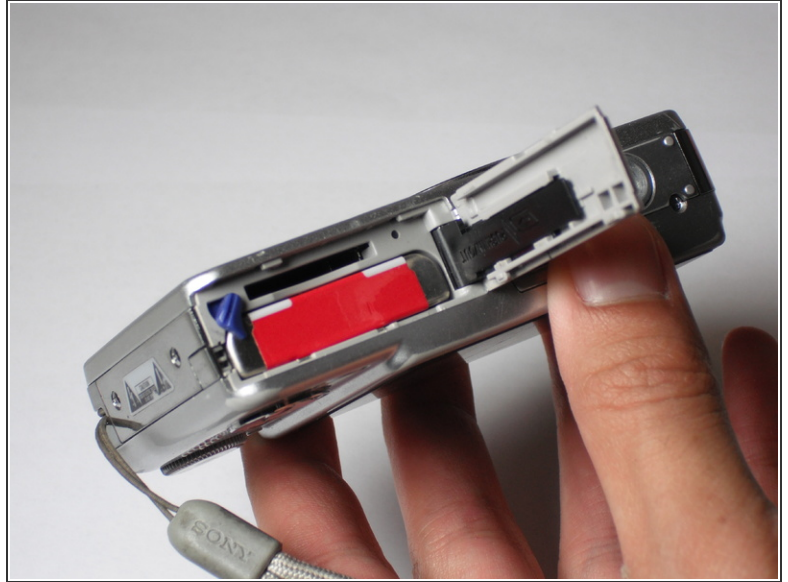
Written By: Eddie Lo



INTRODUCTION

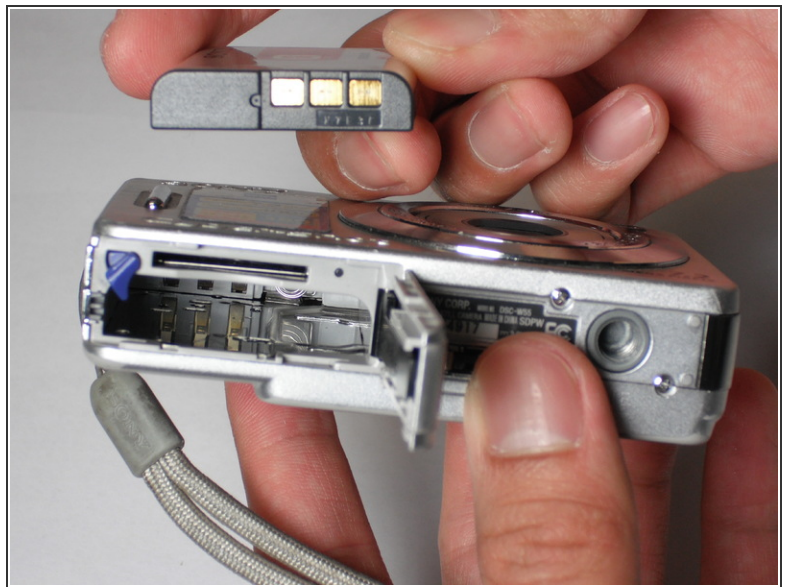
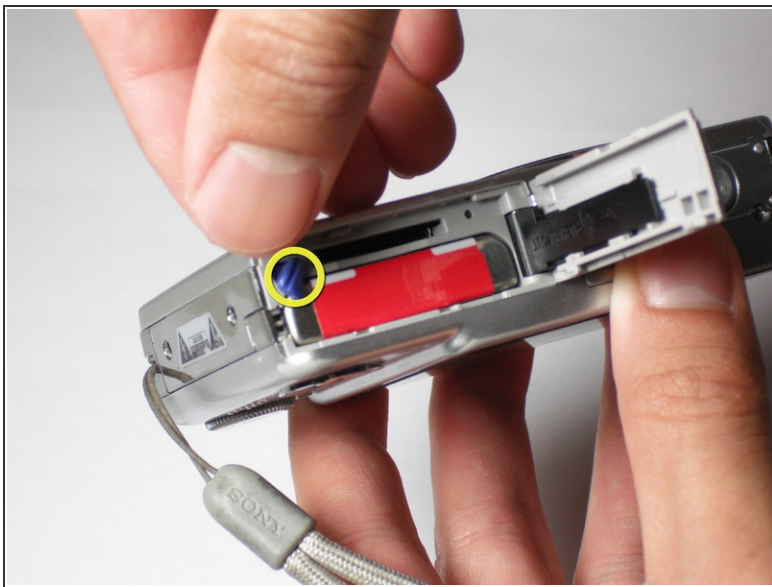
We will explain the steps needed in order to replace a battery when the battery dies.

Step 1 — Battery



- Slide the battery cover in the direction the arrow points.
- Pull the battery cover towards you.

Step 2



- Flick the blue switch for the battery to pop out.
- Remove the battery from the camera.

To reassemble your device, follow these instructions in reverse order.

This document was last generated on 2017-06-21 05:40:31 PM.