



Logitech Dual Action Joystick Replacement

If your joystick is physically damaged and needs replacing, here is how to swap it out.

Written By: Brian Neuman



 **TOOLS:**

- [iFixit Opening Tools](#) (1)
-

Step 1 — Taking out the screws



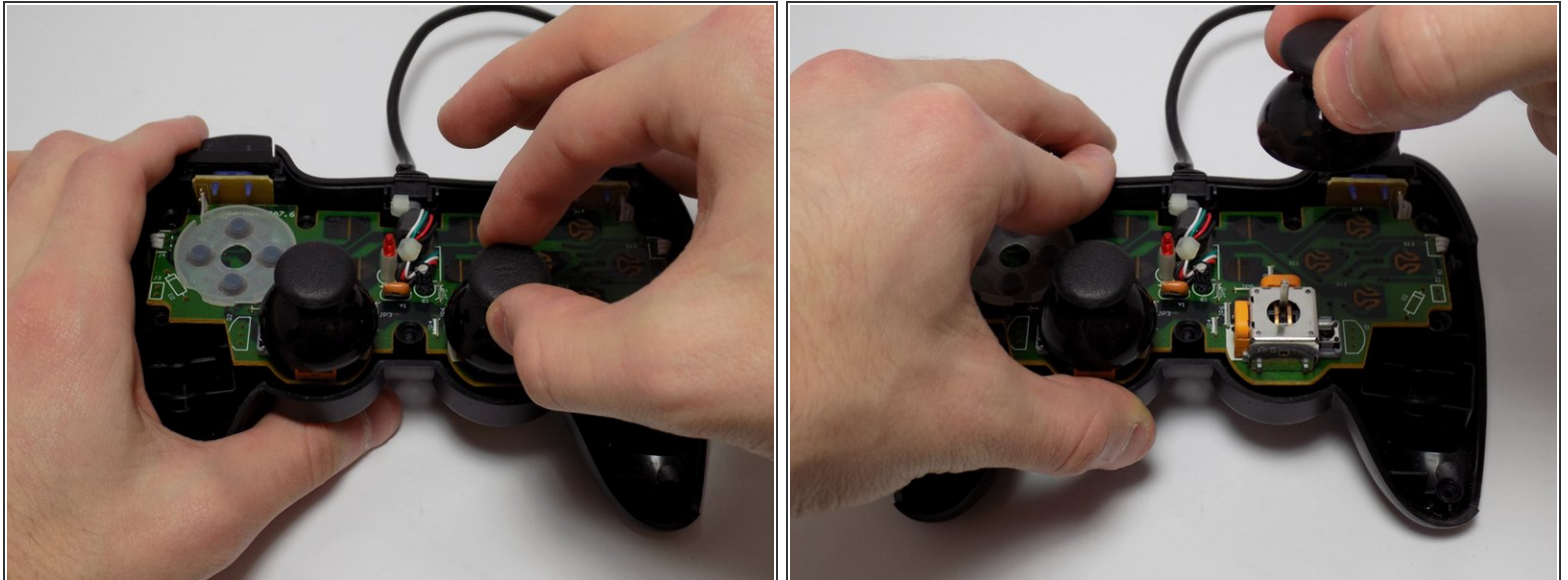
- To get into the controller, you will need to unscrew the 7 screws on the back.
- ⓘ You will have to remove the bottom oval sticker to reveal the screw marked with orange.

Step 2 — Opening the controller



- With the screws removed, turn the controller upside down and separate the front end from the back end.
- It is likely that the buttons will fall out of place, so as you open the controller, try to keep track of where the pieces go.
 - There should be the 4 circular buttons labeled 1-4, 4 smaller circular buttons for the D-Pad, and 3 rounded rectangular buttons.

Step 3 — Replacing the joystick



- With the case off, the joysticks can be removed by pulling them upward.
- To put the replacement joystick on, align the hole at the bottom of the joystick with the rectangular peg and gently push down.
- Make sure that the cut-out side of the joystick is towards the outsides of the device.