



Samsung Galaxy Fame S6812i Motherboard Replacement

The Galaxy Fame is a low end smartphone released in 2013. Its compact size and attractive price tag makes it an ideal solution for a novice user to a smartphone.

Written By: Taylor



This document was generated on 2019-09-18 12:28:33 AM (MST).

INTRODUCTION

You will be learning how to replace the motherboard.

TOOLS:

- [Phillips #00 Screwdriver](#) (1)
 - [iFixit Opening Tools](#) (1)
 - [Tweezers](#) (1)
-

Step 1 — Remove Battery Cover



- Locate the small indent in the top of the device and use your nails or a spudger to separate the cover from the mid-frame.

Step 2 — Remove the Battery



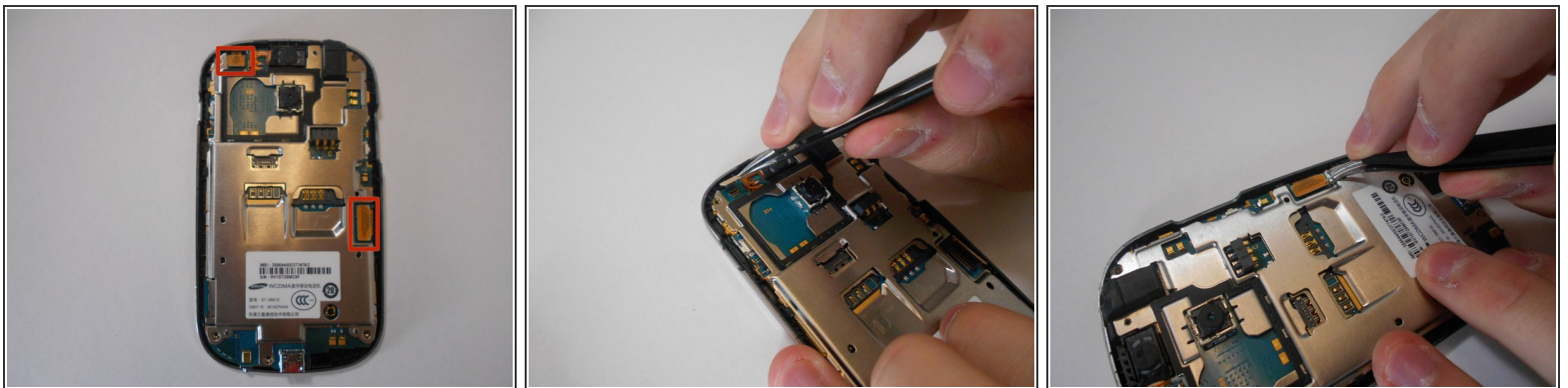
- Locate the indent on the bottom left corner of the battery compartment. Use your fingers or the plastic opening tool to lift the battery from the device.

Step 3 — Remove the Mid-Frame



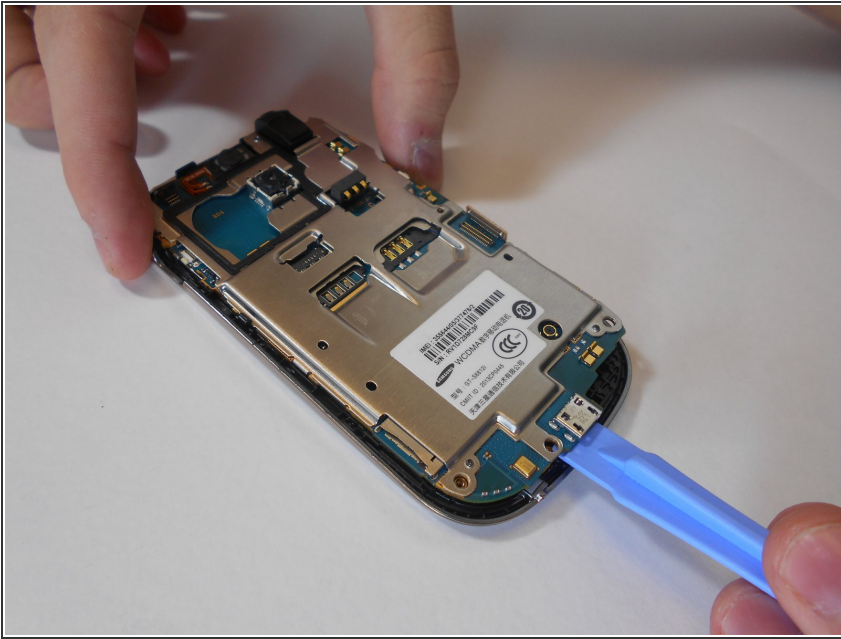
- Remove the five 3mm screws along the top and bottom edges of the device with the Philips #00 screwdriver.
- ⚠ One of these will be hidden under a piece of reflective foil. Breaking this will void the warranty.
- Use the plastic removal tool to work pry the mid-frame from the device.
- ⓘ This may take some effort, so try working around the edges slowly as to not break anything.

Step 4 — Unplug LCD Screen from Motherboard



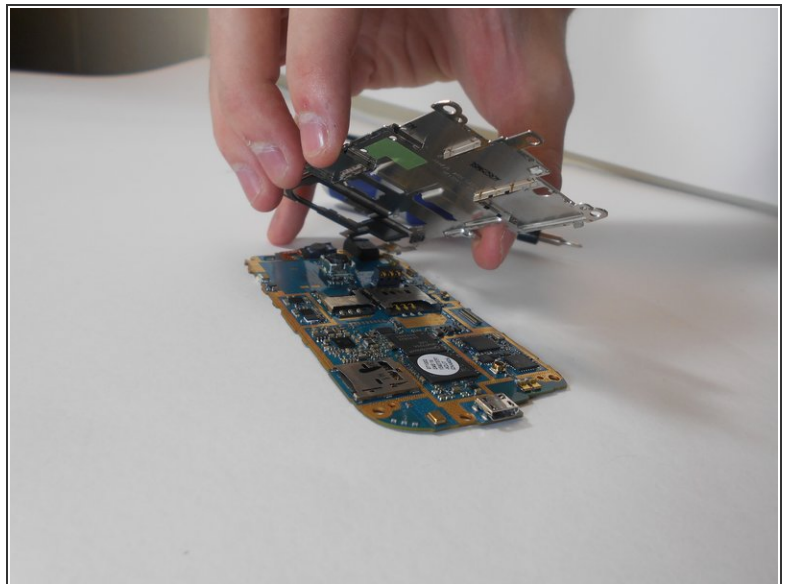
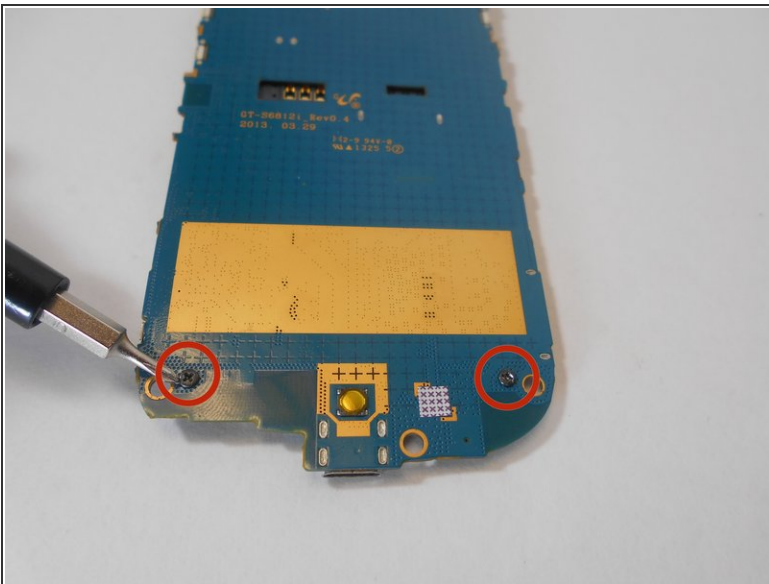
- Locate the two ribbon cable connections on the motherboard. **GENTLY** use the pointed end of the spudger to disconnect the cables. Lift the motherboard out of the phone.

Step 5



- Using your fingers or a plastic opening tool, carefully lift the motherboard assembly from the phone.

Step 6 — Chassis Removal



- On the front face of the motherboard, locate the two #00 Phillips head screws. These hold the SIM card chassis in place.

i Keep these screws separate from the back plate screws.

To reassemble your device, follow these instructions in reverse order.