



Samsung Galaxy Fame S6812i Speaker Replacement

Written By: Taylor



 **TOOLS:**

- [Phillips #00 Screwdriver](#) (1)
 - [iFixit Opening Tools](#) (1)
 - [Tweezers](#) (1)
-

Step 1 — Remove the Battery Cover



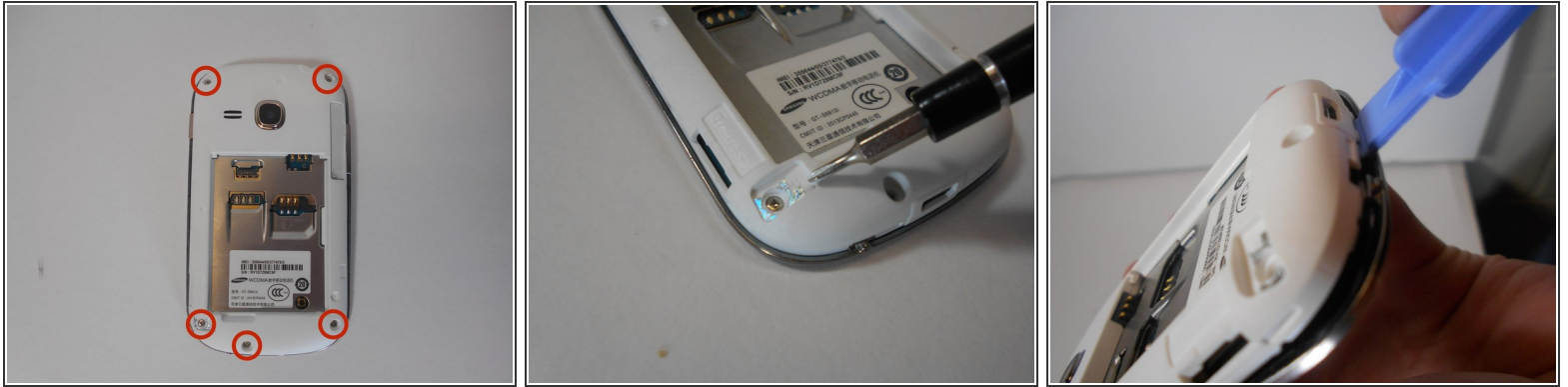
- Locate the small indent in the top of the device and use your nails or the plastic opening tool to separate the cover from the mid-frame.

Step 2 — Remove the Battery



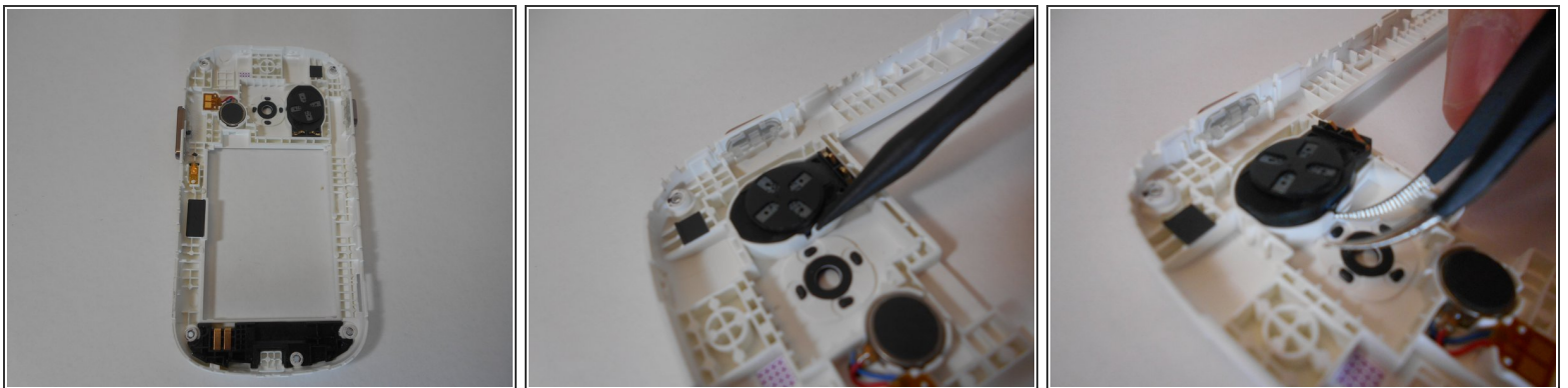
- Locate the indent on the bottom left corner of the battery compartment. Use your fingers or the plastic opening tool to lift the battery from the device.

Step 3 — Remove the Mid-Frame



- Remove the five 3mm screws along the top and bottom edges of the device with the Philips #00 screwdriver.
- ⚠ One of these will be hidden under a piece of reflective foil. Breaking this will void the warranty.
- Use the plastic removal tool to work pry the mid-frame from the device.
- ⓘ This may take some effort, so try working around the edges slowly as to not break anything.

Step 4 — Remove the Damaged Speaker



- Lift the speaker from the phone using your fingers or tweezers.

To reassemble your device, follow these instructions in reverse order.