



Samsung Galaxy Fame S6812i LCD Screen Replacement

Written By: Taylor



 **TOOLS:**

- [Phillips #00 Screwdriver](#) (1)
 - [iFixit Opening Tools](#) (1)
 - [Tweezers](#) (1)
-

Step 1 — Remove the Battery Cover



- Locate the small indent in the top of the device and use your nails or the plastic opening tool to separate the cover from the mid-frame.

Step 2 — Remove the Battery



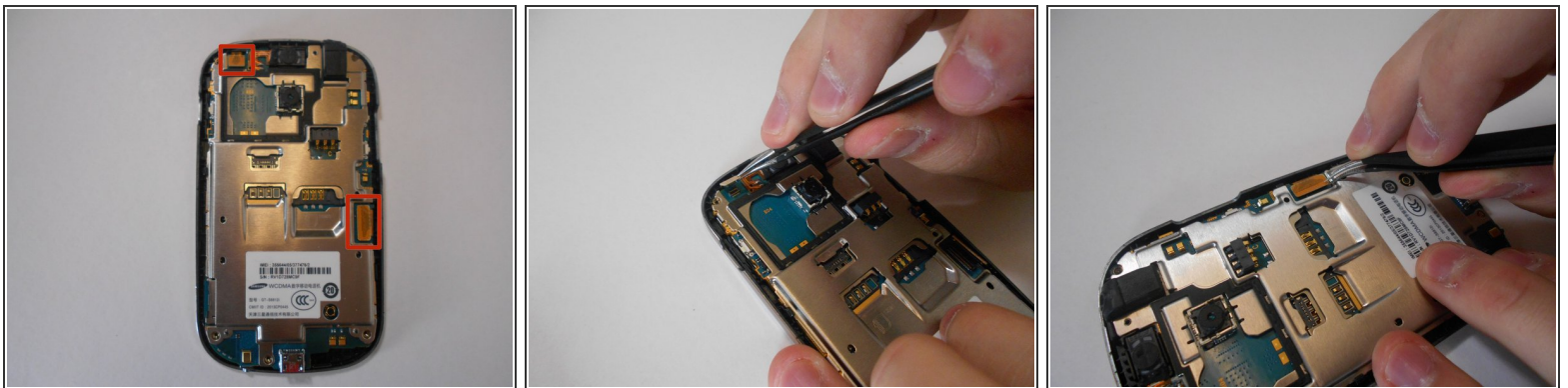
- Locate the indent on the bottom left corner of the battery compartment. Use your fingers or the plastic opening tool to lift the battery from the device.

Step 3 — Remove the Mid-Frame



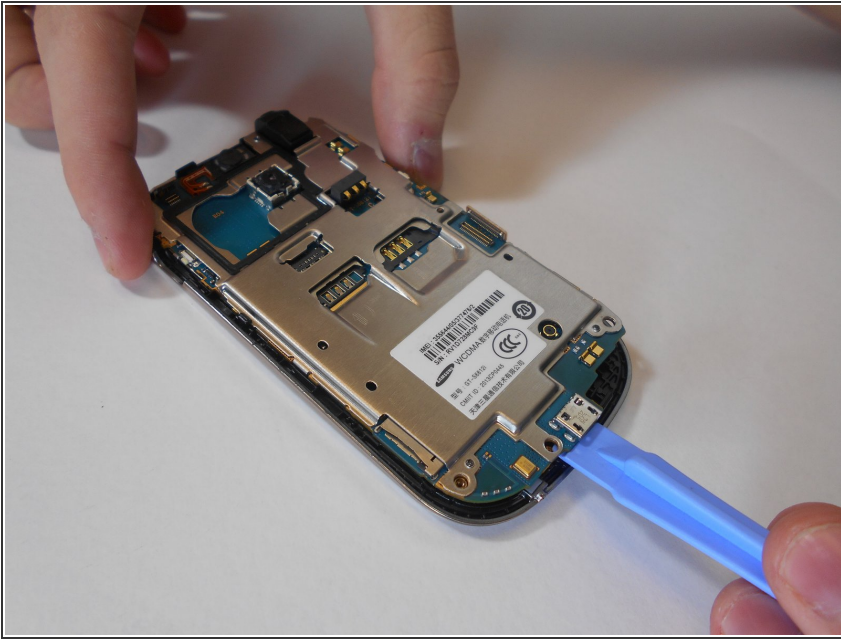
- Remove the five 3mm screws along the top and bottom edges of the device with the Philips #00 screwdriver.
- ⚠ One of these will be hidden under a piece of reflective foil. Breaking this will void the warranty.
- Use the plastic removal tool to work pry the mid-frame from the device.
- ⓘ This may take some effort, so try working around the edges slowly as to not break anything.

Step 4 — Unplug LCD Screen from the Motherboard



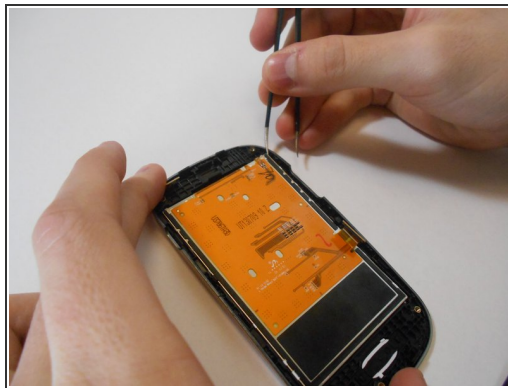
- Carefully use the pointed end of the spudger to disconnect the ribbon connections on the motherboard.

Step 5 — Remove the Motherboard



- Wedge the plastic opening tool between the motherboard and front plate to dismount the motherboard and chassis from the front plate of the phone.

Step 6 — Remove Damaged LCD Screen



- Use one side of the tweezers to pry the LCD off of the front plate of the phone.
- ⓘ Work in a clean environment and do not touch the inside of the plastic screen cover or the face of the new LCD Screen. These cannot be cleaned once the device is reassembled.

To reassemble your device, follow these instructions in reverse order.