



Kindle Touch 3G Card Housing Replacement

For models that have 3G capability, this is the location and procedure to successfully replace the unit.

Written By: Adam Yerly



INTRODUCTION

[video: <https://www.youtube.com/watch?v=lpdMFIs0TFY>]

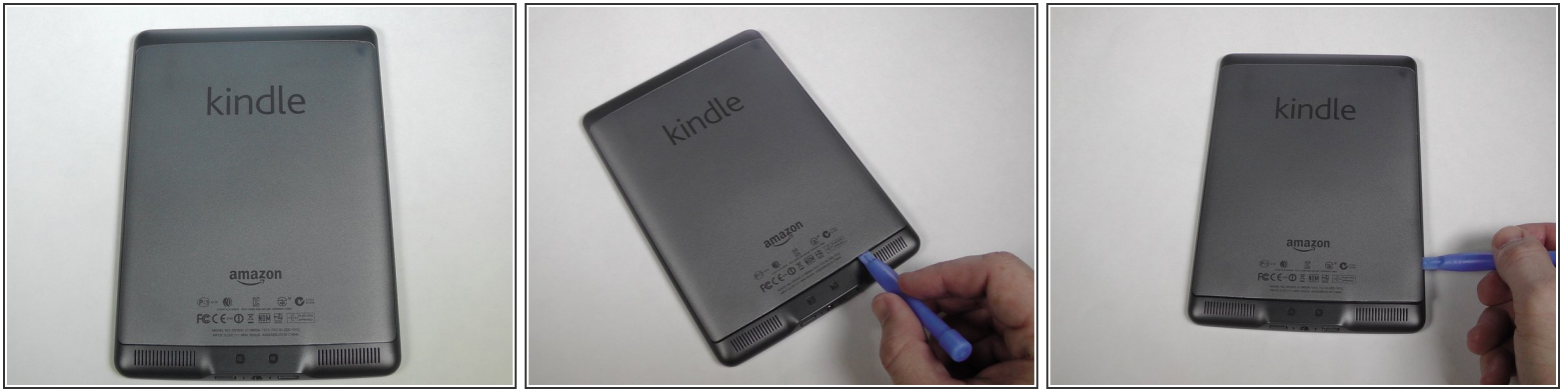
Next to the battery is the 3G unit. However, in the

models that are WiFi only, there will instead be a plastic placeholder instead. The replacement instructions for both are identical.

TOOLS:

- [Phillips #00 Screwdriver](#) (1)
 - [iFixit Opening Tools](#) (1)
 - [Spudger](#) (1)
-

Step 1 — Back Cover



- With the small plastic opening tool, undo the plastic clips around the back lid.

Step 2



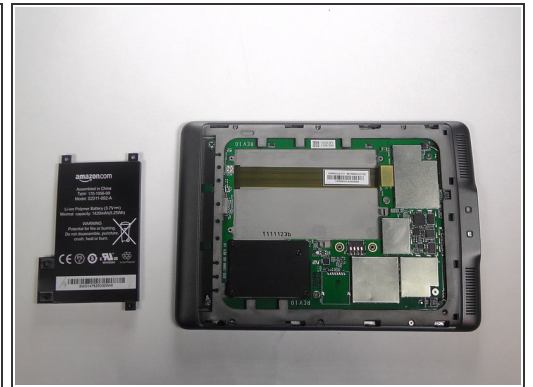
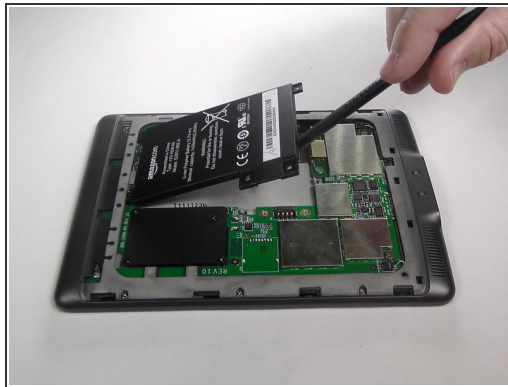
- Gently lift the bottom and pull as the rest of the plastic guides are on a track.

Step 3 — Battery



- Remove these five 2 mm screws using a Phillips #00 screwdriver.

Step 4



- Using the flat end of your spudger, gently pry the battery up and remove it.

Step 5 — Remove the 3G Board



- Remove the indicated four 2 mm screws with a Phillips #00 screwdriver. (Units with the 3G assembly have Phillips #000 screws.)
- Next, gently lift the 3G assembly with a Spudger or your fingers.
- ⓘ This Kindle Touch is the WiFi only model and comes with a plastic placeholder instead of the 3G assembly.
- Disconnect the antenna lead by carefully prying it off the 3G board with a plastic tool.

To reassemble your device, follow these instructions in reverse order.