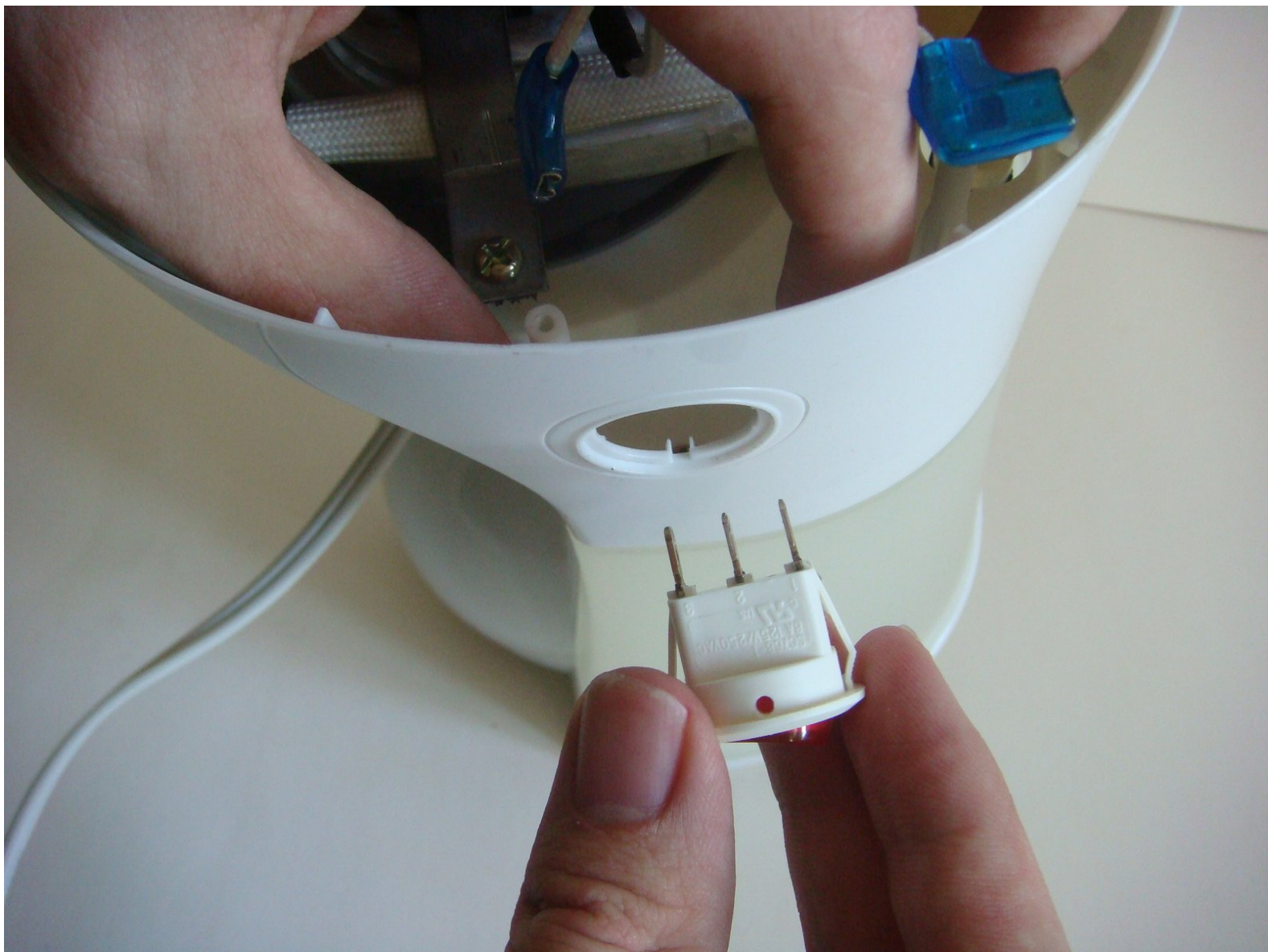




XQ-673H Power Switch Replacement

This guide will show the owner how to take apart the device and show the owner how to replace the power switch.

Written By: Sean Perry



INTRODUCTION

This guide will help the owner of a Kitchen Gourmet XQ-673H replace the power switch.

TOOLS:

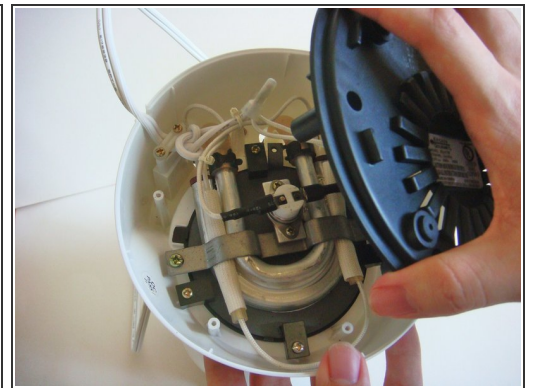
- Flathead 3/32" or 2.5 mm Screwdriver (1)
 - Phillips #1 Screwdriver (1)
 - iFixit Opening Tools (1)
 - Spudger (1)
-

Step 1 — Power Switch



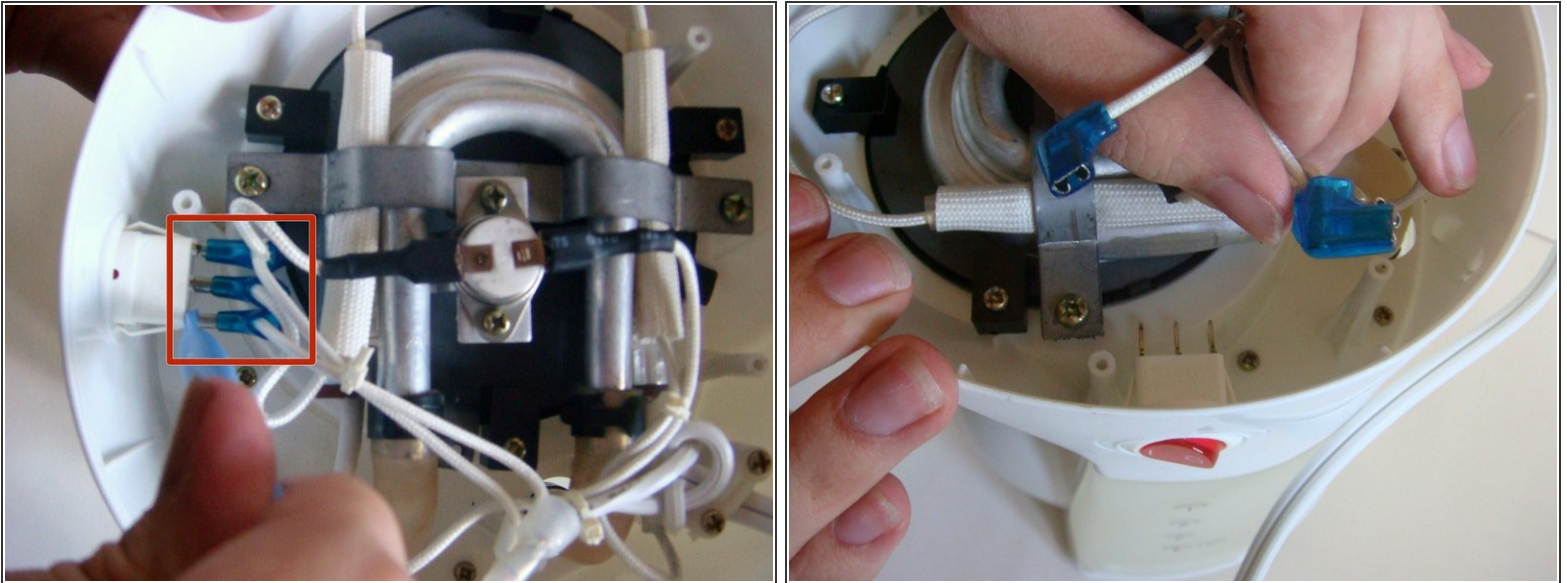
- Turn the Kitchen Gourmet upside down.
- ⚠ Make sure the device is unplugged before continuing.

Step 2



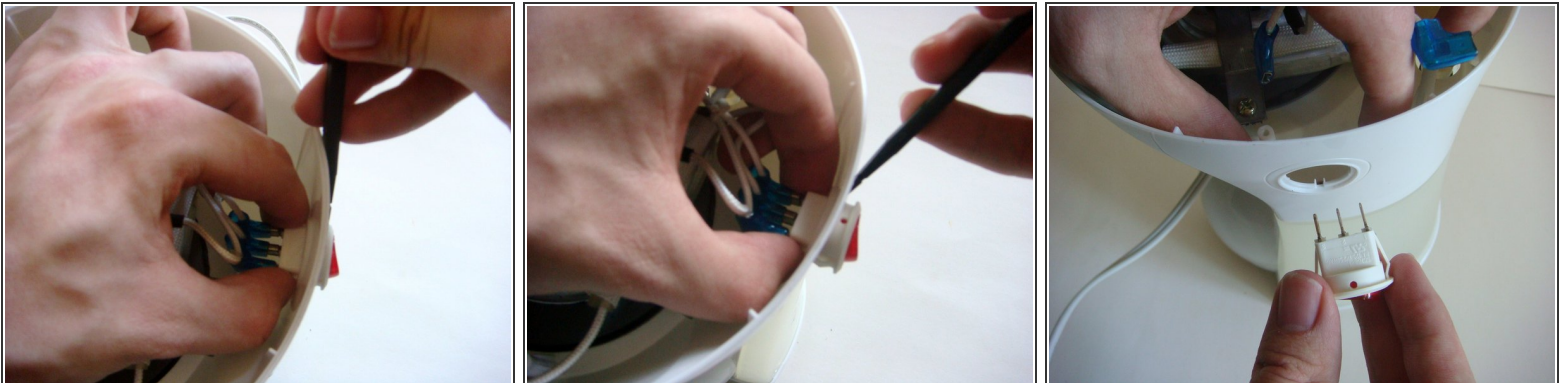
- Using a phillips #1 screwdriver, remove the six 10mm screws found on the bottom of the device.
- Remove the bottom cover.

Step 3



- Using a Plastic Opening Tool, carefully slide back the three power connectors for the Power Switch until fully removed.

Step 4



- Gently squeeze the sides of the Power Switch, while using a Spudger to help pop out the Power Switch.

To reassemble your device, follow these instructions in reverse order.