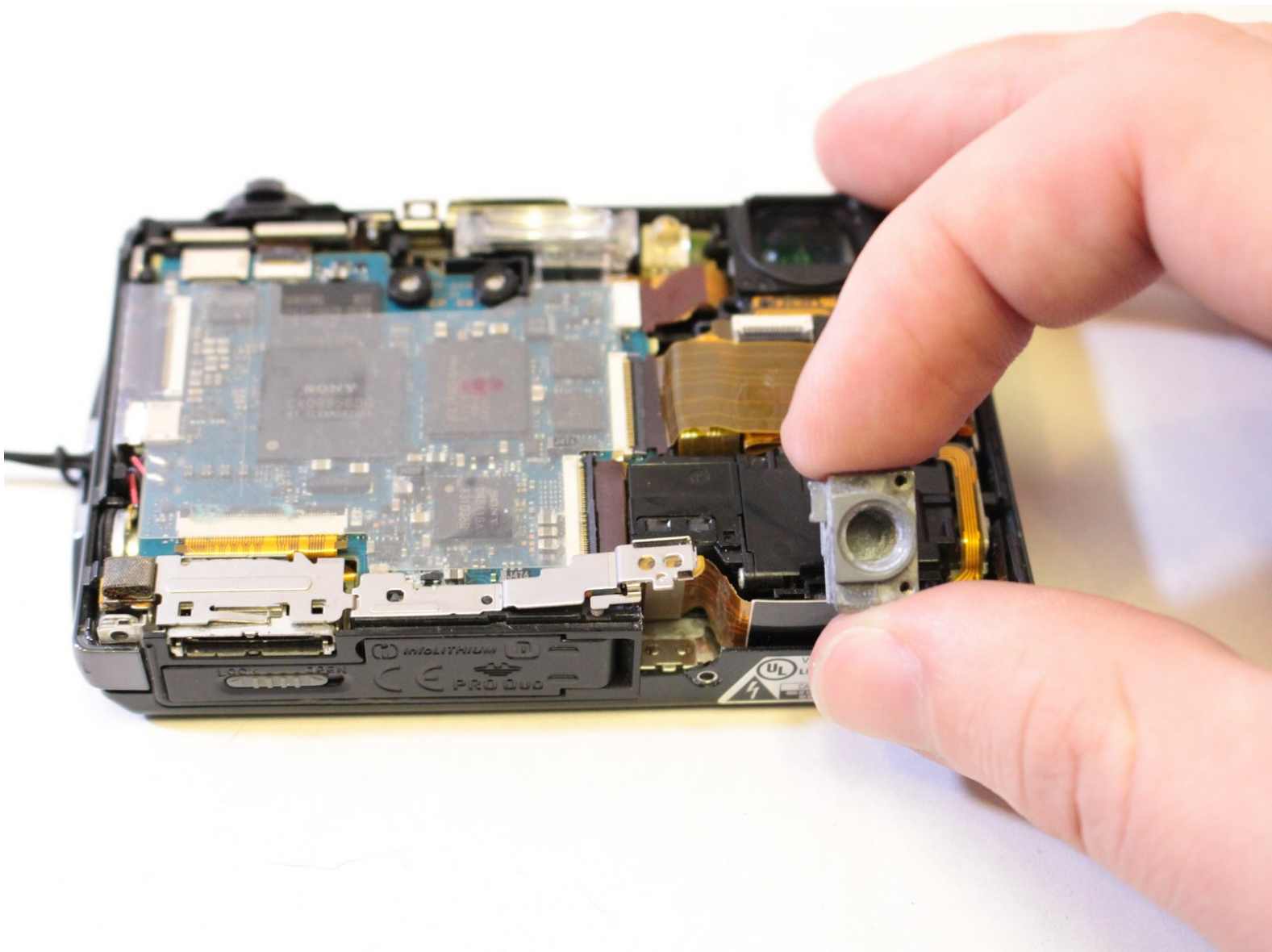




# Sony Cyber-shot DSC-T500 Tripod Receptacle Replacement

The Cyber-shot DSC-T500 comes ready to attach to a tripod. If the receptacle gets damaged, this guide will show how to replace it.

Written By: Chelsea Vitone



---

## INTRODUCTION

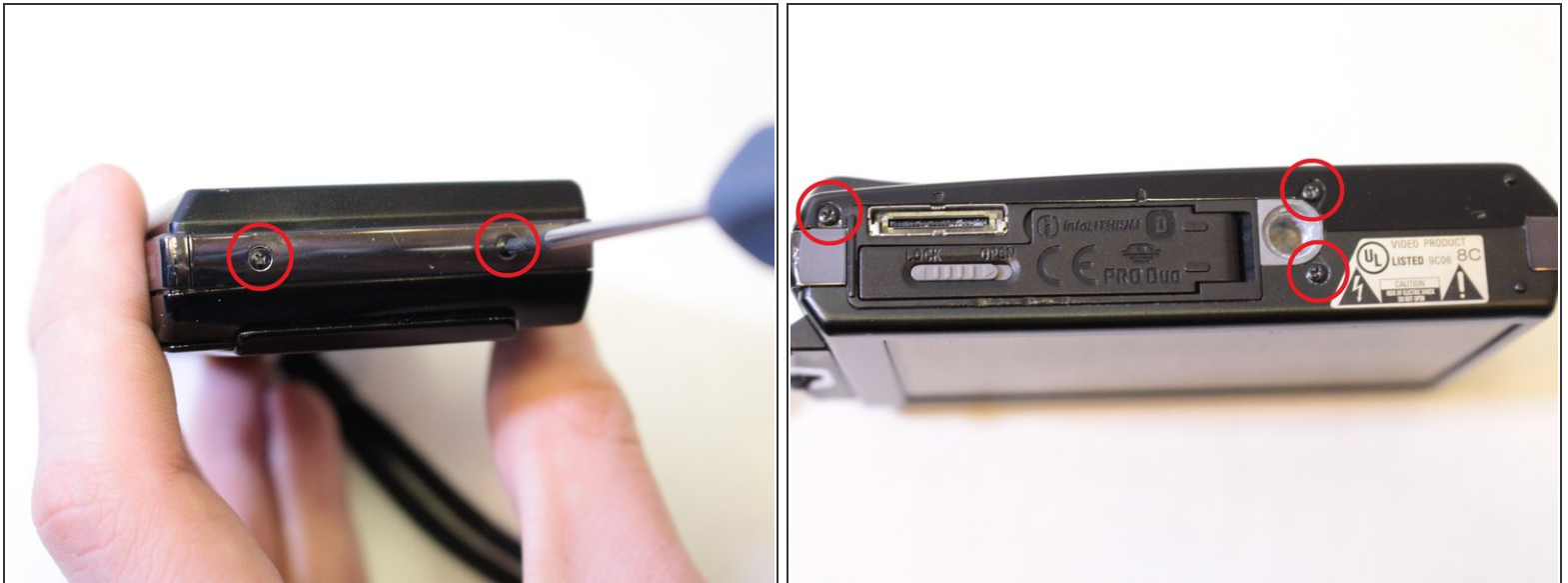
By following 4 easy steps, you will be able to open the camera, locate the tripod receptacle, and replace it.

---

### TOOLS:

- [Phillips #00 Screwdriver](#) (1)
-

## Step 1 — Front Panel



- Remove all seven black 4 mm Philips #00 screws holding the front panel into place. Two on each of the sides of the camera and three on the bottom.

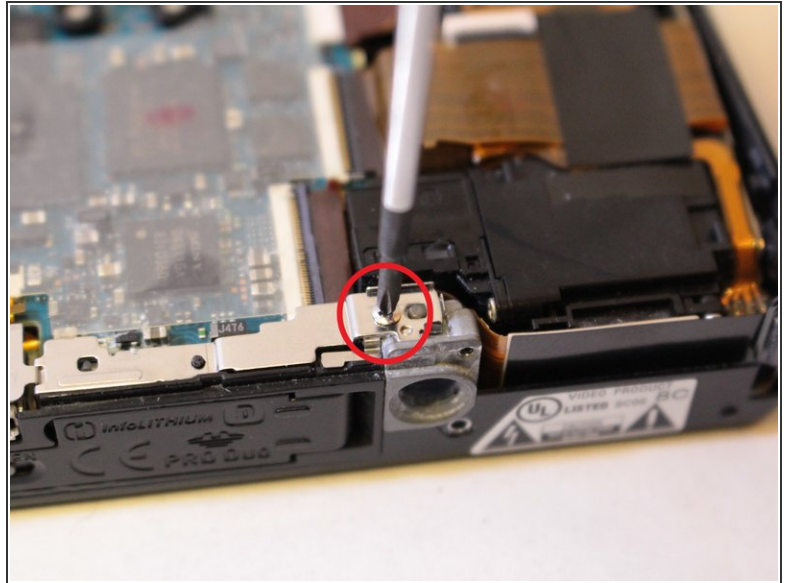
## Step 2



- Gently lift the front panel up off the back of the camera prying up around the edges using a plastic opening tool or spudger if necessary.

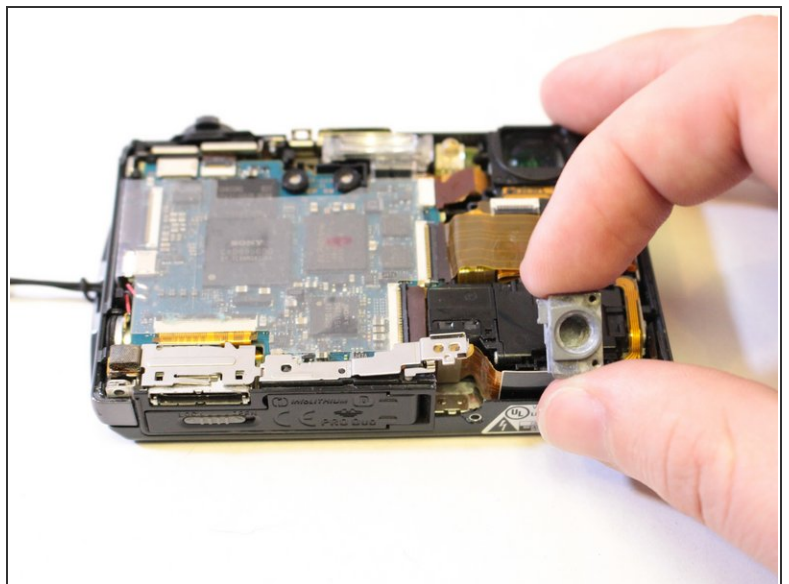
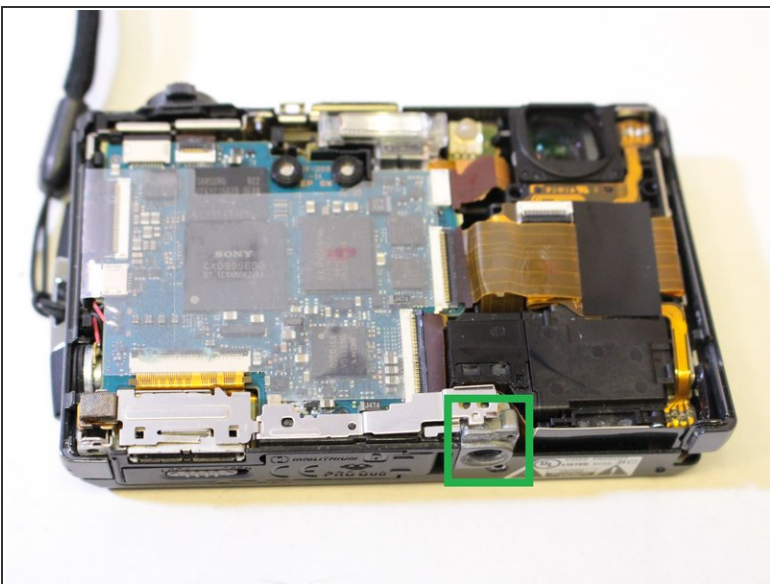


### Step 3 — Remove Inner Screw



- Remove the one sliver 4mm Philips #00 screw that is holding the receptacle in place near the bottom of the camera.
- ⓘ There is one other screw just like this one on the top of the camera near the capture button. That's not the one you want to remove here

### Step 4 — Remove Tripod Receptacle



- Remove the tripod receptacle by simply lifting it out with your hands or with tweezers if necessary.

To reassemble your device, follow these instructions in reverse order.