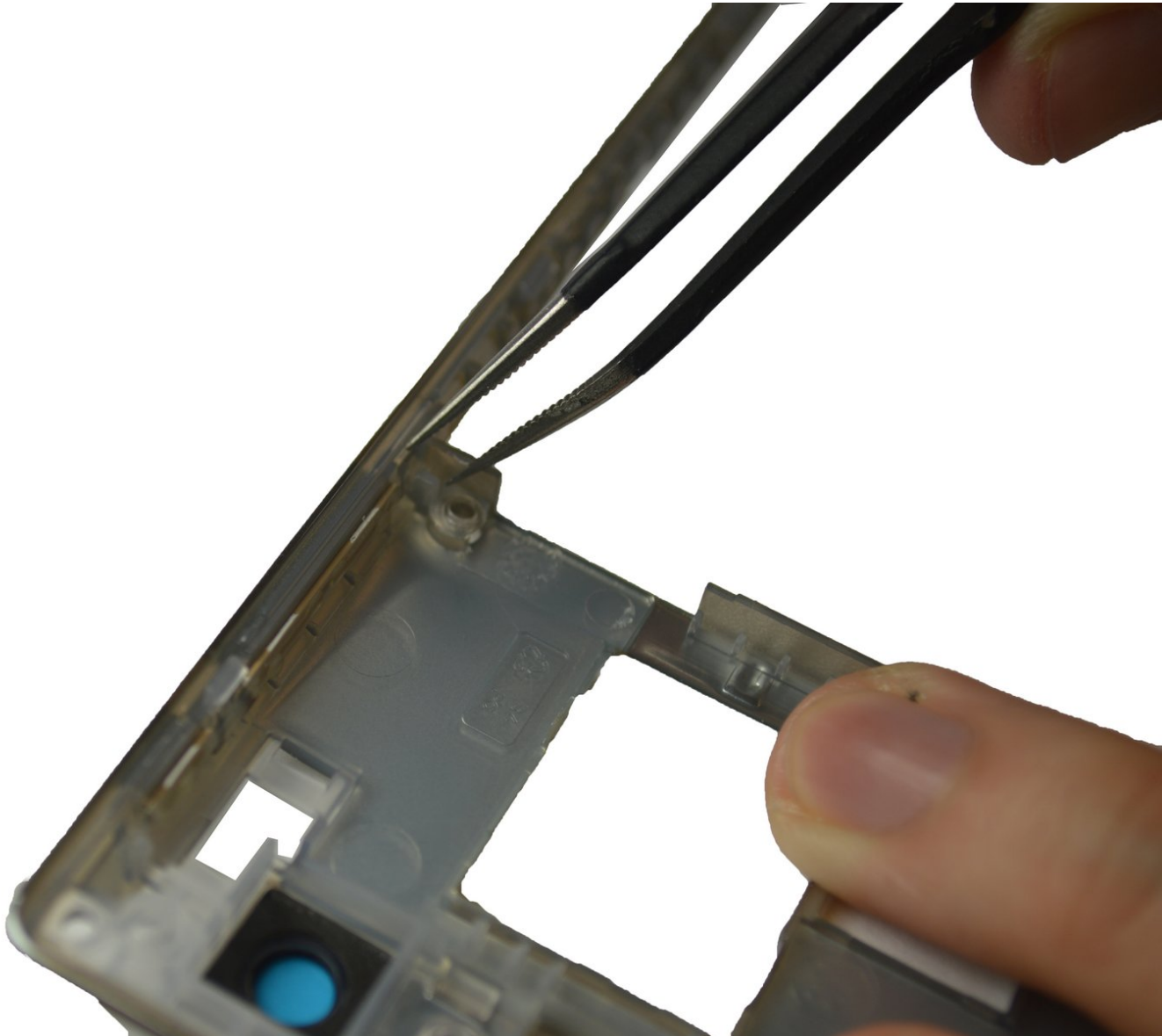




Sony Xperia J Volume/Lock Buttons Replacement

This will guide you to successfully remove and replace the volume/lock buttons.

Written By: Arlind



INTRODUCTION

The volume/lock buttons are located on the same silver case as the speaker. You will need to successfully remove this silver plate to get to the buttons. Use the recommended tools.

The battery should be removed before working on the phone internals.

TOOLS:

- [iFixit Opening Tools](#) (1)
 - [T5 Torx Screwdriver](#) (1)
 - [Tweezers](#) (1)
-

Step 1 — External Features



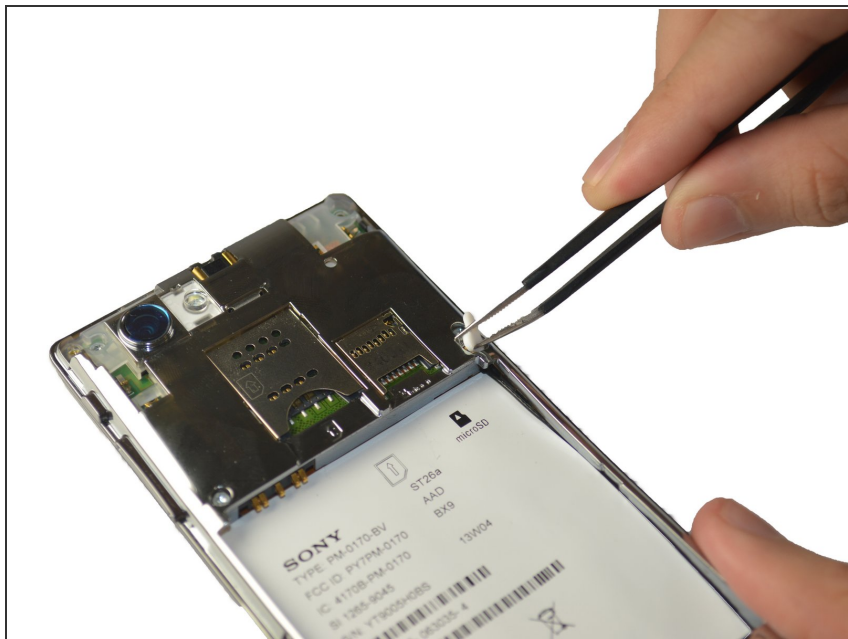
- You will need a Torx T5 screwdriver, plastic opening tool, and a pincet for this operation.

Step 2



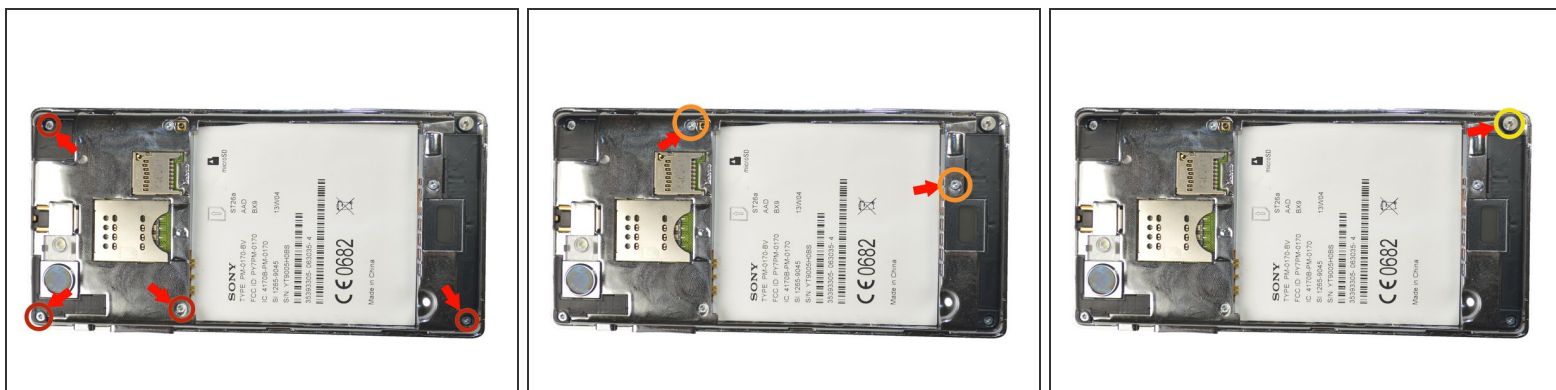
- Find the little bracket on the bottom left of the phone (when looking at it upside down) and use the opening tool to pry off the back cover.

Step 3



- Remove the silicone cover by squeezing it with the tweezers, there is not much pressure needed.

Step 4



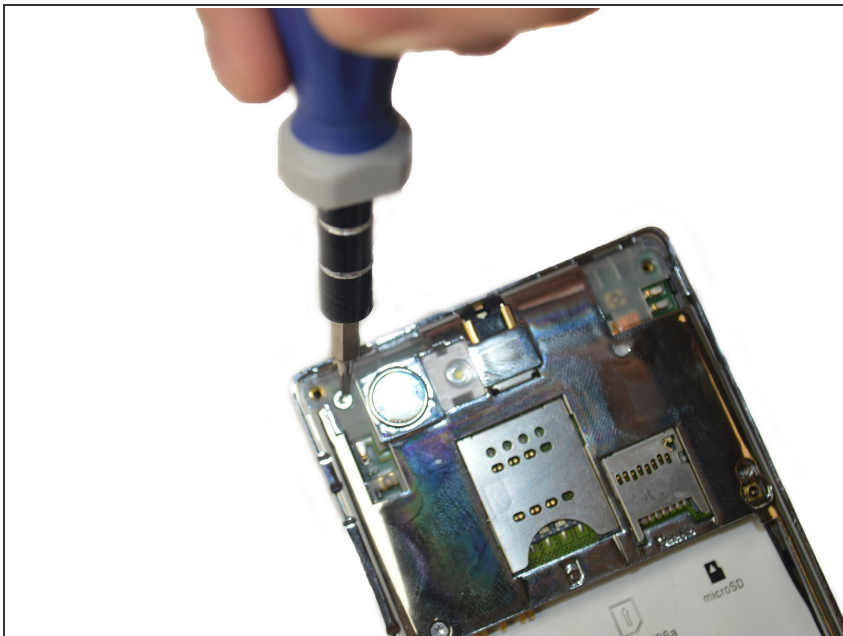
- Using the Torx T5 screwdriver remove the four 4.74mm screws.
- Then remove the two 3.13mm screws
- Lastly remove 5.90mm screw.

Step 5



- Using the tweezers remove the black plate at the bottom of the phone. First insert the tweezers tip at the intersection between the black plate and phone, then just pull the plate up.
- Repeat the same steps to remove the black plates located at the top left, and top right of the phone.

Step 6



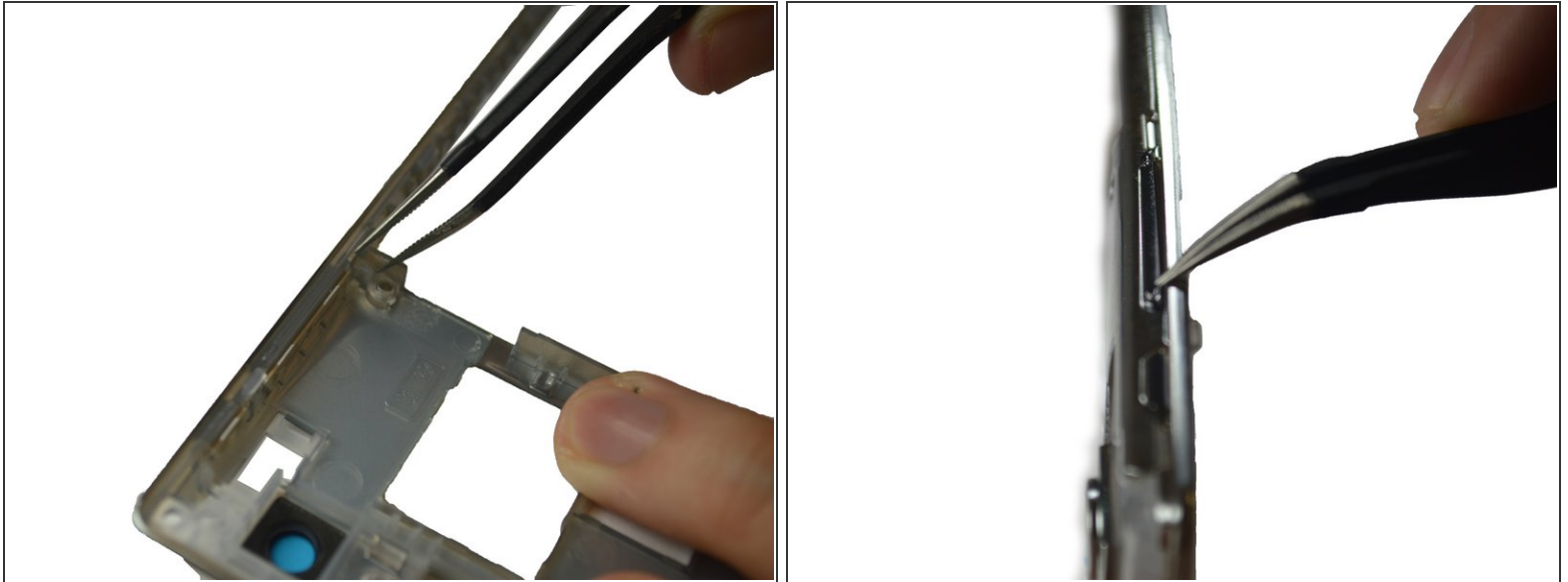
- After removing the top left black plate, you will find another 3.13mm screw. Just remove it by using the screwdriver.

Step 7



- Place the plastic opening tool in-between the black external case of the phone and the silver case, then move it along the edges of the phone to detach the plates.

Step 8 — Volume/Lock Buttons



- Grabbing the silver plate you just removed, locate the volume and lock switch on the upper right of it.
- Using the tweezers, unclip the two silicone gel clips located at the ends of the keys.
- Once the buttons are unclipped, push the keys from the outside to the inside. (As in the second picture)

To reassemble your device, follow these instructions in reverse order.