



Omega Z100S2 Case Replacement

Installing the top cover of the case

Written By: Chris Rudolph



 **TOOLS:**

- Spudger (1)
-

Step 1 — Case



- Push in the plastic tab that can be seen through cracks in the front left corner using a spudger.

Step 2



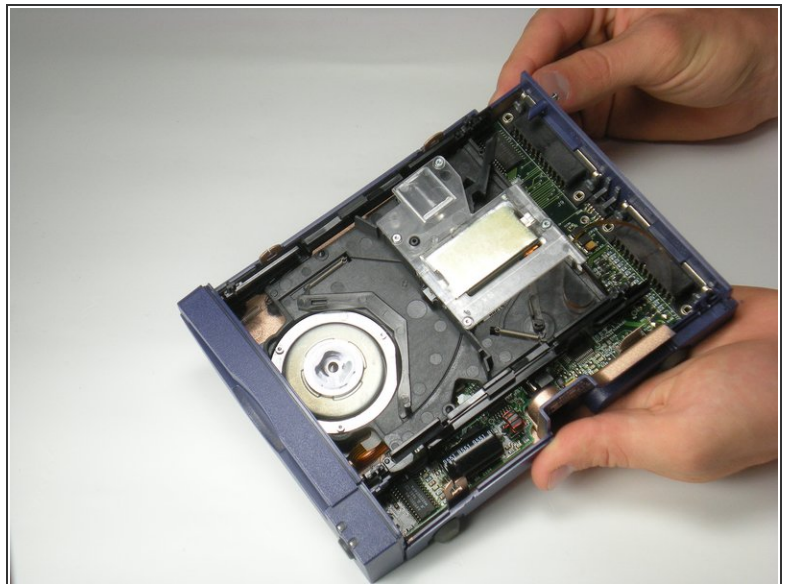
- Move down the same side and push in the plastic tab.

Step 3



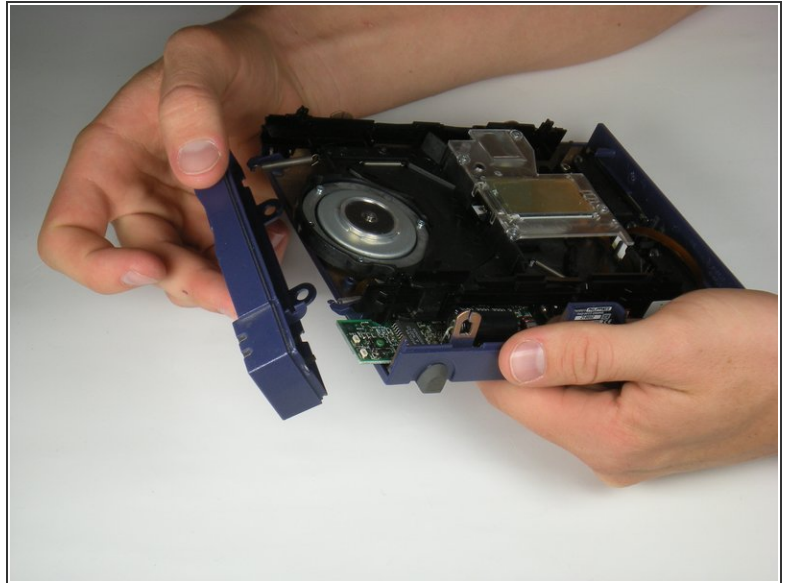
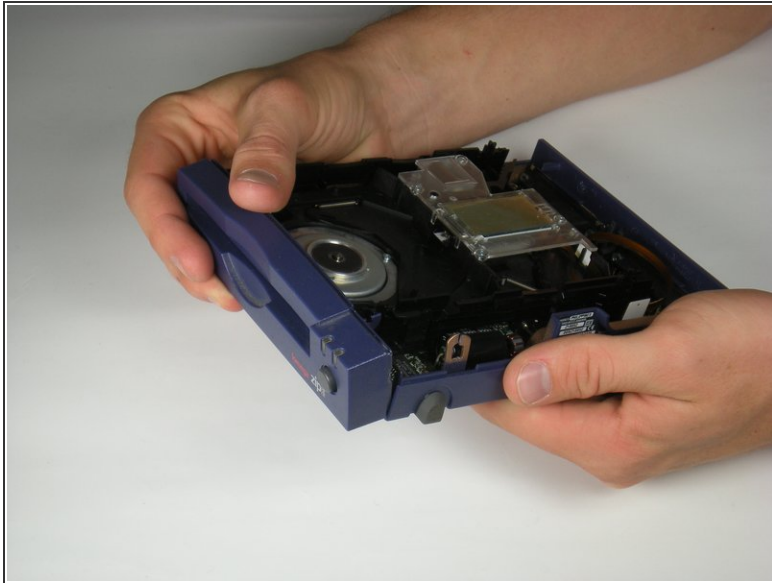
- Move to the front right side and once again push in the plastic tab.
- ⓘ There is not a fourth tab to push in after this one.

Step 4



- Grab the cover by the front side and pull upwards.
- You might encounter some resistance. Pull firmly, but don't yank it.

Step 5



- Tilt the front case down until the pegs detach from the bottom of the case.
- Lift up and outward.
- ⓘ The motherboard will be loose at this point.

To reassemble your device, follow these instructions in reverse order.