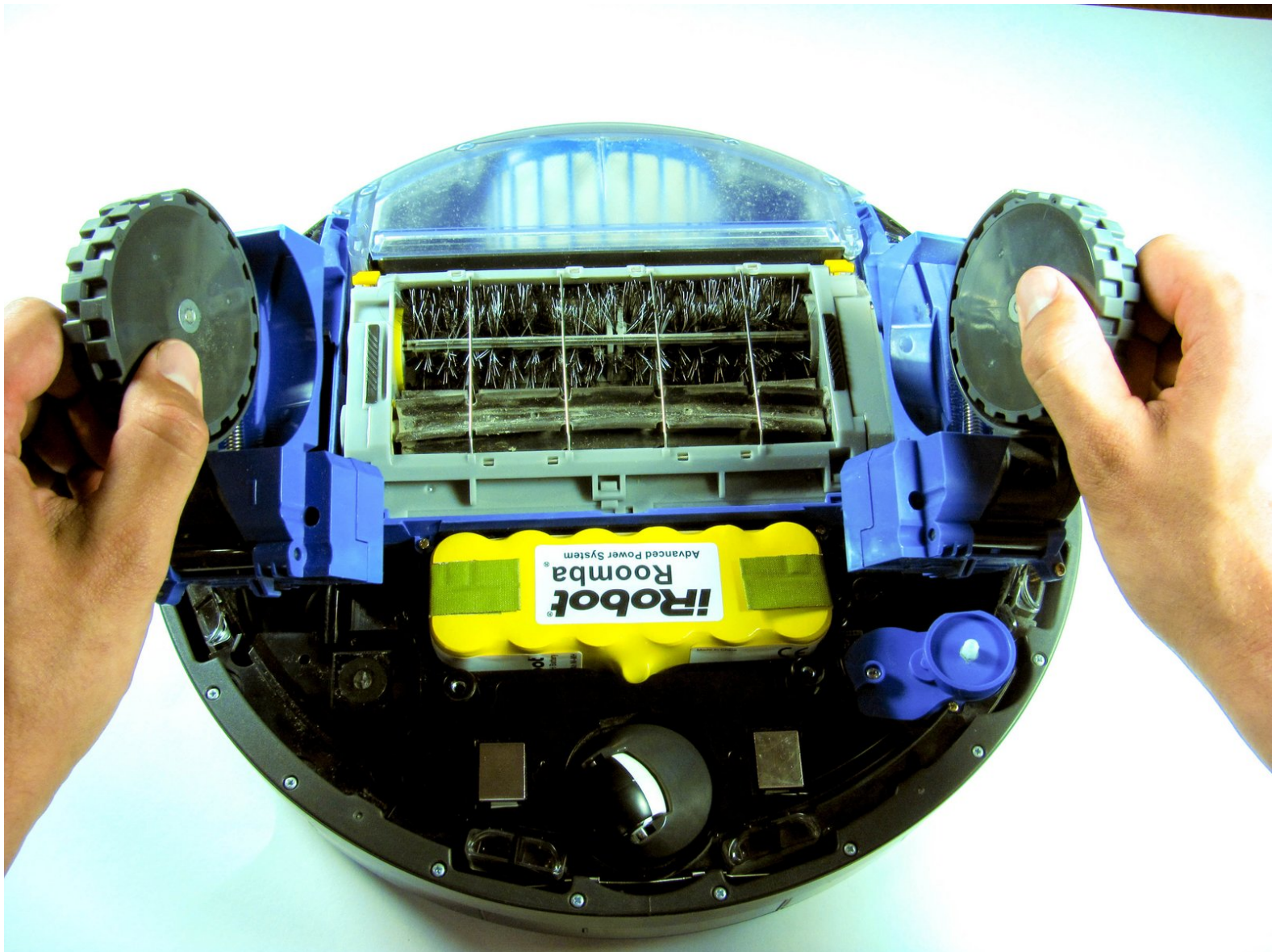




# iRobot Roomba 650 Main Wheel Replacement

Replace the main wheel in your Roomba 650.

Written By: Alex Schnorr



---

## INTRODUCTION

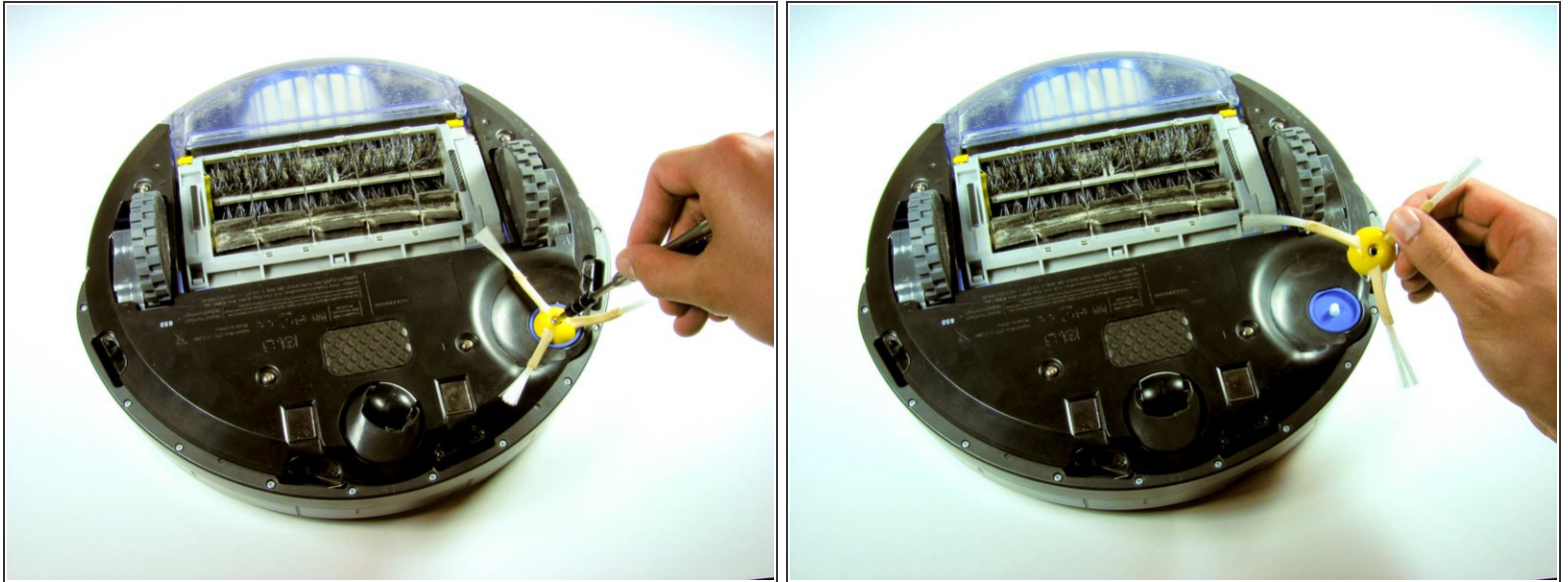
Learn how to easily replace a broken wheel on your Roomba 650. The two main wheels move the Roomba forward, as opposed to the caster wheel in the front which changes direction. Sometimes dusts get trapped inside the wheel, so just gently push the wheel up and down to shake off any debris in there as opposed to replacing them.

---

### TOOLS:

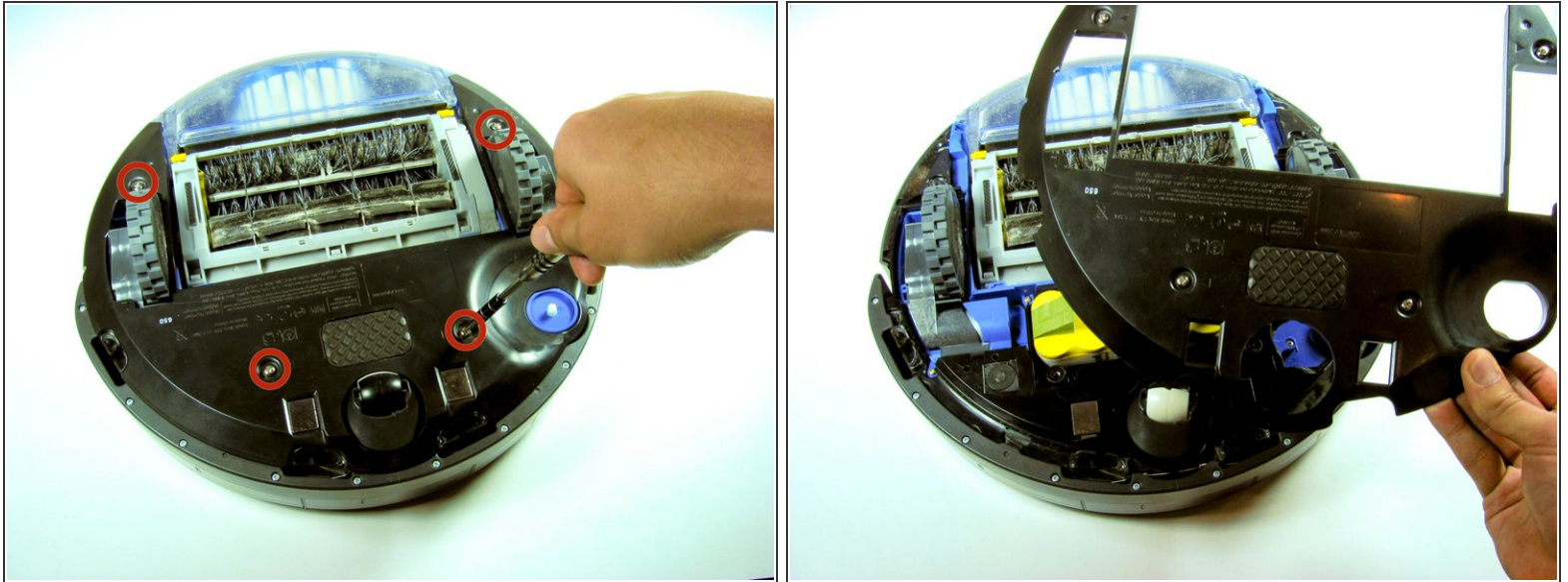
- [Phillips #0 Screwdriver](#) (1)
-

## Step 1 — Removing the Side Brush



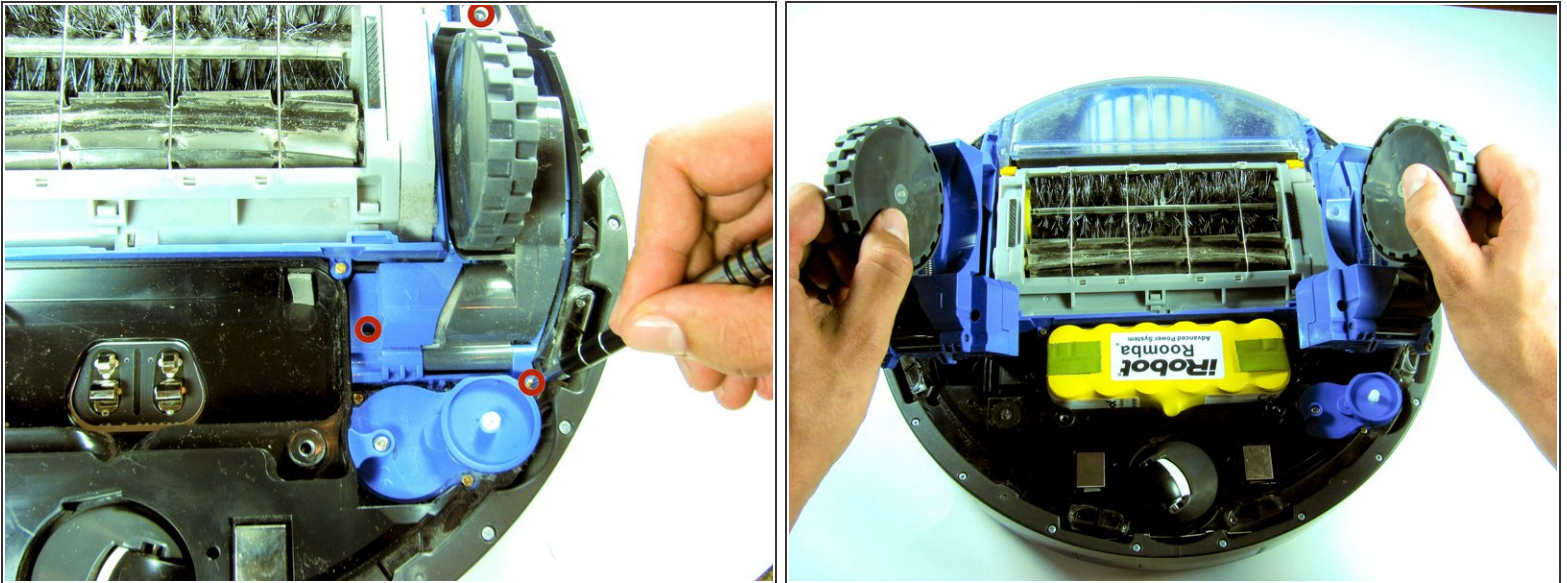
- With the Roomba upside down and turned off, use the Phillip's 02 screwdriver to remove the one 3.5 mm screw from the center of the side-brush.
- Set the screw aside and pull the brush out.

## Step 2 — Bottom Panel Removal



- Unscrew the four screws that hold the bottom panel using the Phillips 02 screwdriver.
- ⓘ The screws will not come out of the bottom panel. They were designed to become loose but not be removed. This prevents you from losing them, and prevents the Roomba from sucking them up if they came out during cleaning.
- Once you are sure that all the screws have been loosened as much as possible, then lift the bottom panel up off the Roomba.

### Step 3 — Main Wheels



- Unscrew the six 12mm screws holding the side wheels on using a Phillips 00 screwdriver. There should be 3 on each side.
- ⓘ The screws do not come all the way out.
- Remove the wheels by pulling them out.

To reassemble your device, follow these instructions in reverse order.