



# Sony Walkman NWZ-S764 Frame Replacement

Prerequisite Only

Written By: John Ferguson



---

# INTRODUCTION

Prerequisite Only

---

## TOOLS:

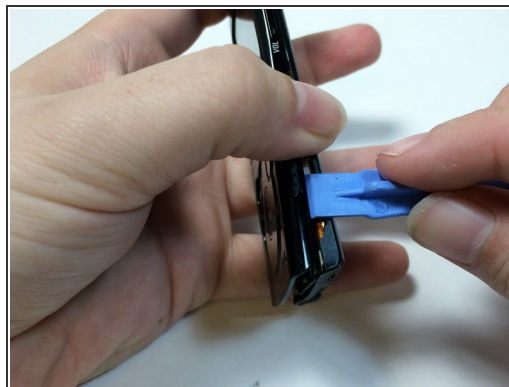
- [iFixit Opening Tools](#) (1)
  - [64 Bit Driver Kit](#) (1)
-

## Step 1 — Removing the back cover



- Remove the two black 6.4mm Phillips screws from the back of the device.

## Step 2



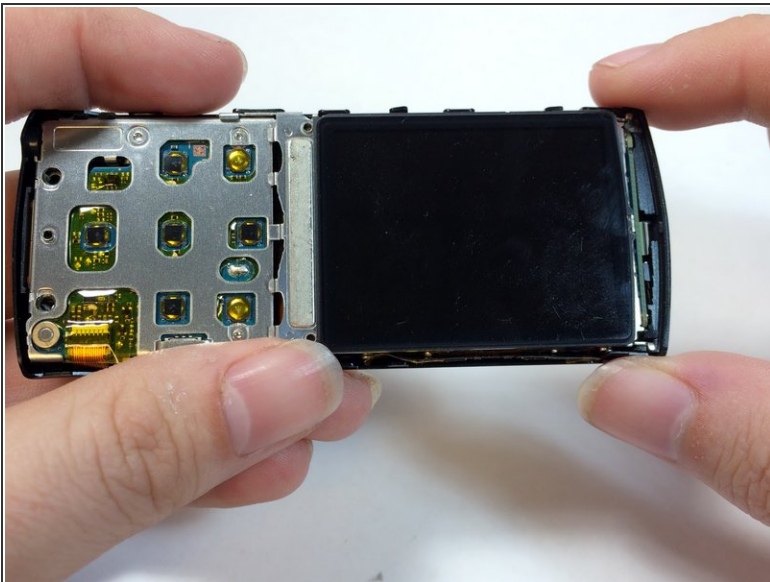
- Using a plastic opening tool, work your way around the edges of the device, carefully prying off the front panel.

### Step 3



- Remove the two 2.8 mm phillips screws located on either side of the device near the top.

### Step 4



- Carefully pull the top piece away from the device.

To reassemble your device, follow these instructions in reverse order.