



HP Pavilion dv6000 Hard Drive Replacement

Replacing the hard drive in the HP Pavilion dv6000.

Written By: Ben Hirsch



INTRODUCTION

If your hard drive is not working or you want to add in a larger hard drive, follow this guide.

TOOLS:

- [Phillips #00 Screwdriver](#) (1)

PARTS:

- [1 TB SSD / Upgrade Bundle](#) (1)
- [250 GB SSD / Upgrade Bundle](#) (1)
- [500 GB SSD / Upgrade Bundle](#) (1)
- [2 TB SSD](#) (1)

Step 1 — Hard Drive



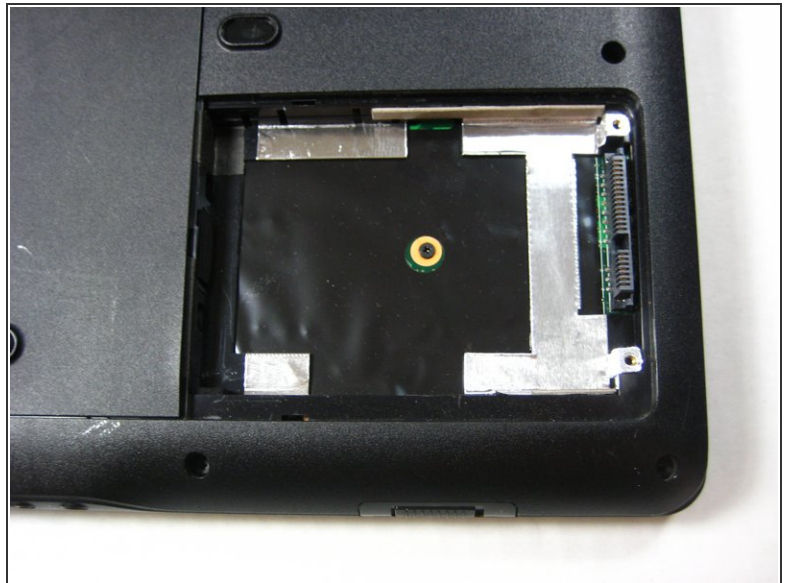
- Remove the two screws from the hard drive shield and lift it off starting at the right side. The screws will remain in the shield.

Step 2



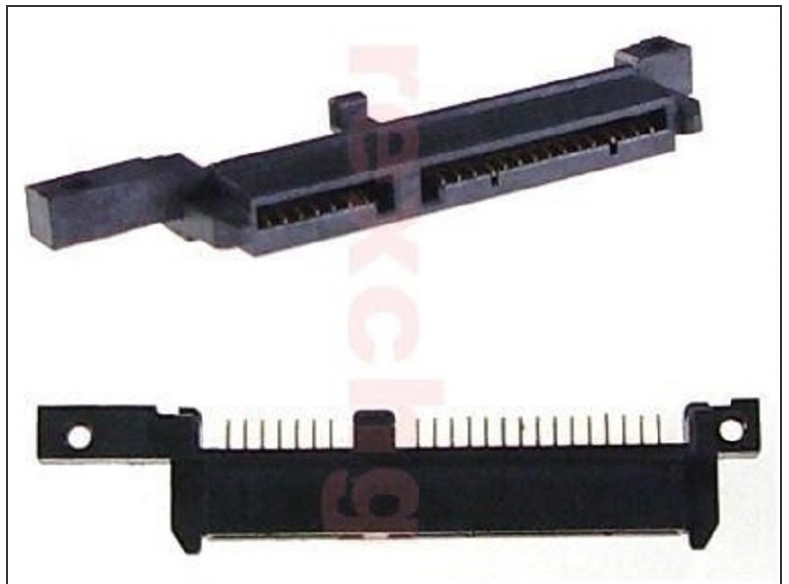
- Pull the plastic tab attached to the hard drive. The hard drive lifts right out. Pull gently so you don't damage the contacts.

Step 3



- Now you have your hard drive out!

Step 4



- Gently pull forward the HP adapter from the top of the hard drive.
- Insert the adapter onto the new SATA hard drive, to be replaced in the laptop.

To reassemble your device, follow these instructions in reverse order.