



Hamilton Beach 25460Z Handle Replacement

Use this guide to replace a damaged handle that could be preventing your Panini Press from opening properly.

Written By: Gregory Taxerman



INTRODUCTION

This is a straight-forward process that requires removal of washers and bolts.


The handle can be removed if it needs to be replaced, or to make access to the top heating element housing easier.

TOOLS:

- [4mm Allen Wrench](#) (1)
 - [Metal Spudger](#) (1)
-

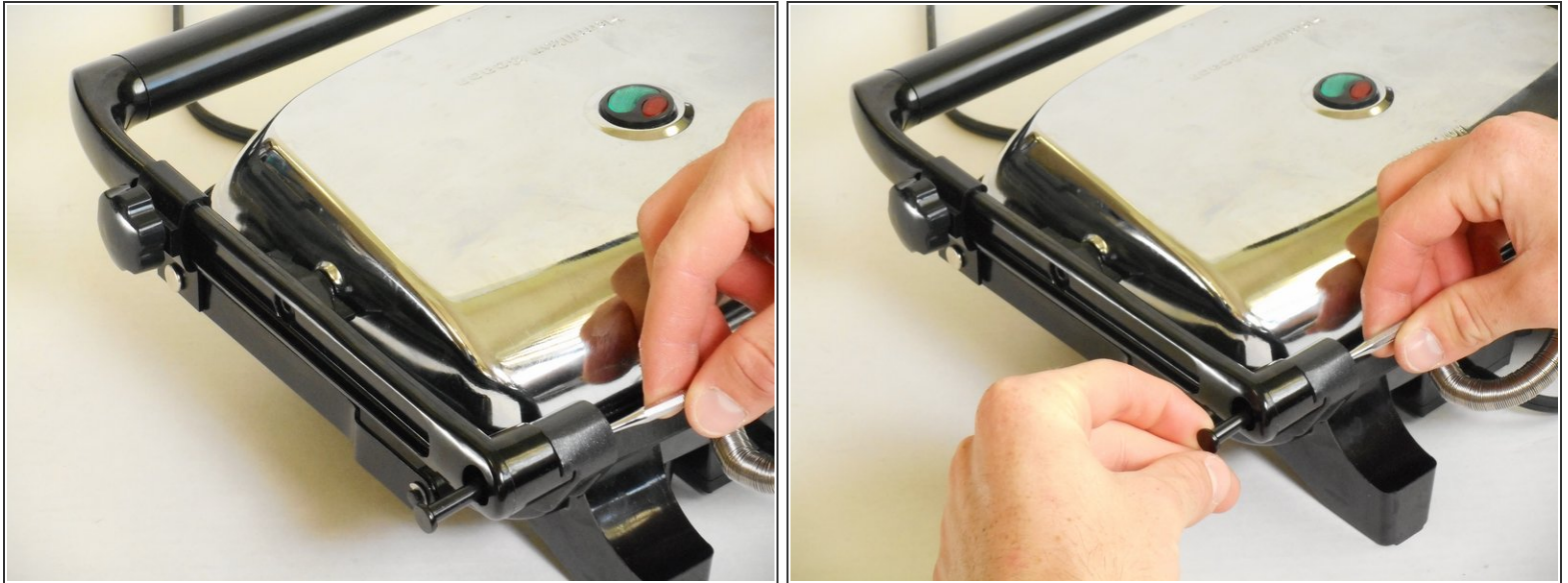
Step 1 — Handle



 Unplug your device before proceeding with disassembly.

- On the back of the press, remove the locking washer by prying upwards with the nylon or metal spudger tool.
- Repeat for the other washer across from the first one.

Step 2



- Using any long, thin object, push the 43mm bolt from the inside towards the outside to expose the end of the bolt.
- Pull the end of the bolt out to completely remove it.
- Repeat for the second bolt.

Step 3



- Using the 4.0mm Allen Wrench, unscrew the two 26mm bolts connecting the handle to the upper heating element housing on both sides.

Step 4



- Unscrew the locking knob all the way to remove it.

Step 5



- Slide the locking knob couple down to the base of the handle, then pull up on the free end of the handle. It will easily pop off.

To reassemble your device, follow these instructions in reverse order.