



Toilet Seat Replacement

Replace worn out or broken toilet seat.

Written By: Christopher Carter



INTRODUCTION

Is your toilet seat getting old or broken? Use this guide to learn how to replace your old toilet seat with a new one.

TOOLS:

- [Phillips #2 Screwdriver](#) (1)
- [Measuring Tape](#) (1)

PARTS:

- [New Toilet Seat](#) (1)
- [Screws](#) (2)
special 20mm
Provided with the toilet seat

Step 1 — Toilet Seat



- Measure the size of your toilet bowl to know what size seat to purchase.

Step 2



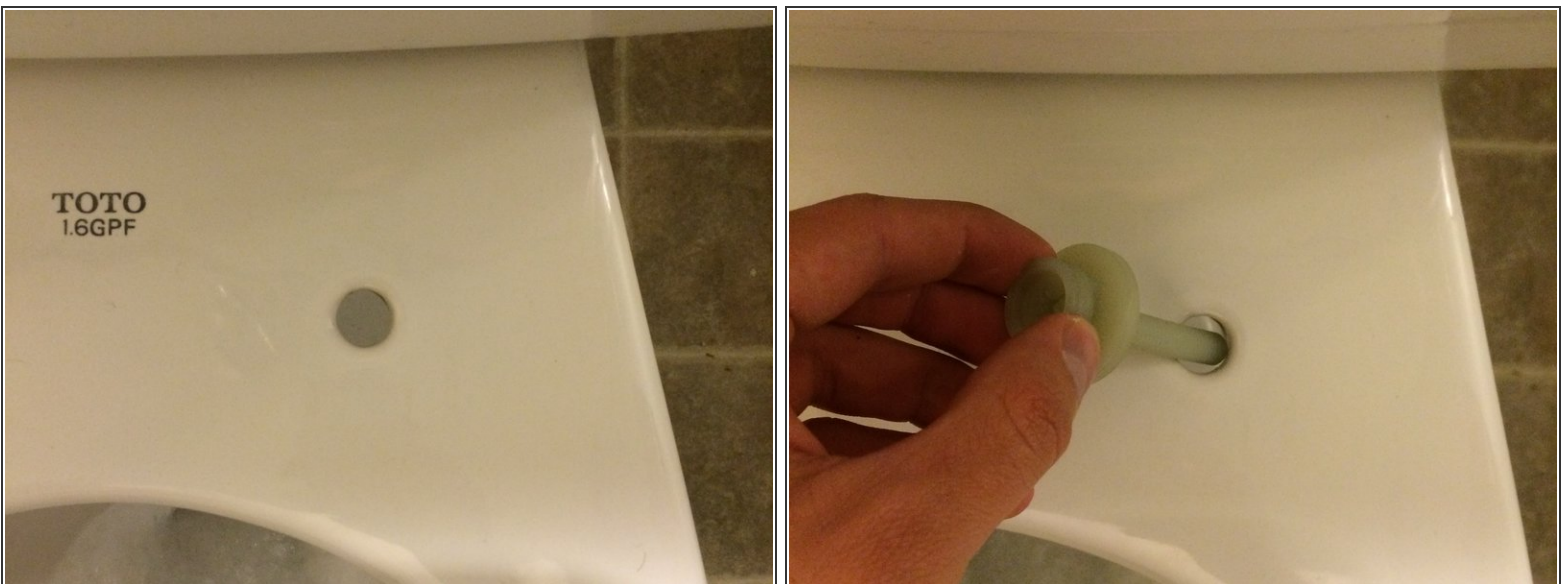
- Twist the tops of the hinges of the currently installed toilet seat and pull toilet seat off to expose the screws.

Step 3



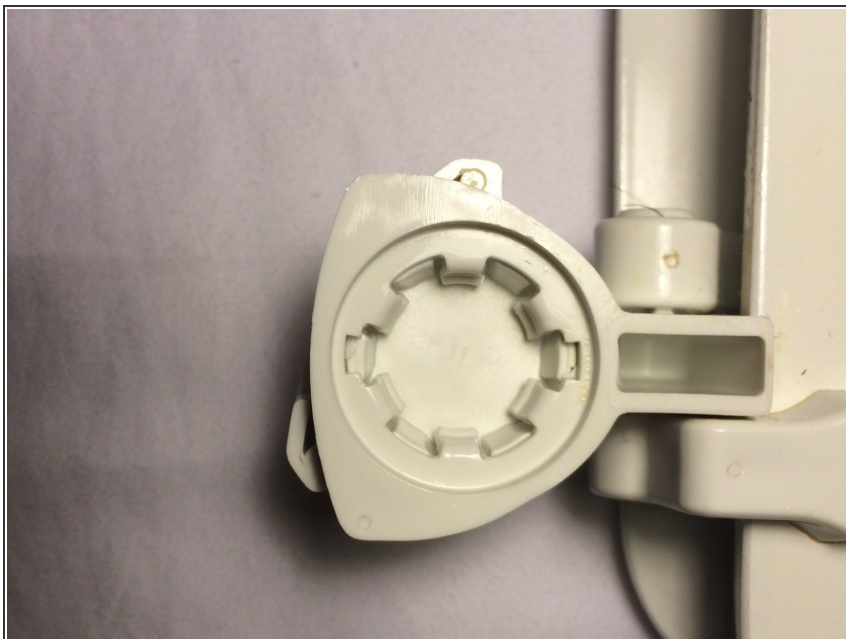
- Unscrew the screws to detach the seat.
- ⓘ If the screw is not loosening but is spinning as if it were, then hold the back plastic nut so that it can unscrew from the nut.
- ☑ Clean the newly exposed area. This opportunity will not present itself again anytime soon so take advantage of it.

Step 4



- Insert new special 20mm screws that are provided with the purchase of the toilet seat in the holes and tighten them.

Step 5



- Then re install the toilet seat by fitting the heads of the screws in the holes on the hinges of the seat.

Step 6



- Close caps by twisting them in the opposite direction that you did to take off the seat.

To re-install your previous seat, follow these instructions in reverse order.