



Fixing the Automatic Reverse Flipping of a Cassette-to-Aux Adaptor

This guide will help you remove the mechanism in a cassette-to-aux adaptor that causes older cassette players to auto-flip.

Written By: Jonathan Falco



INTRODUCTION

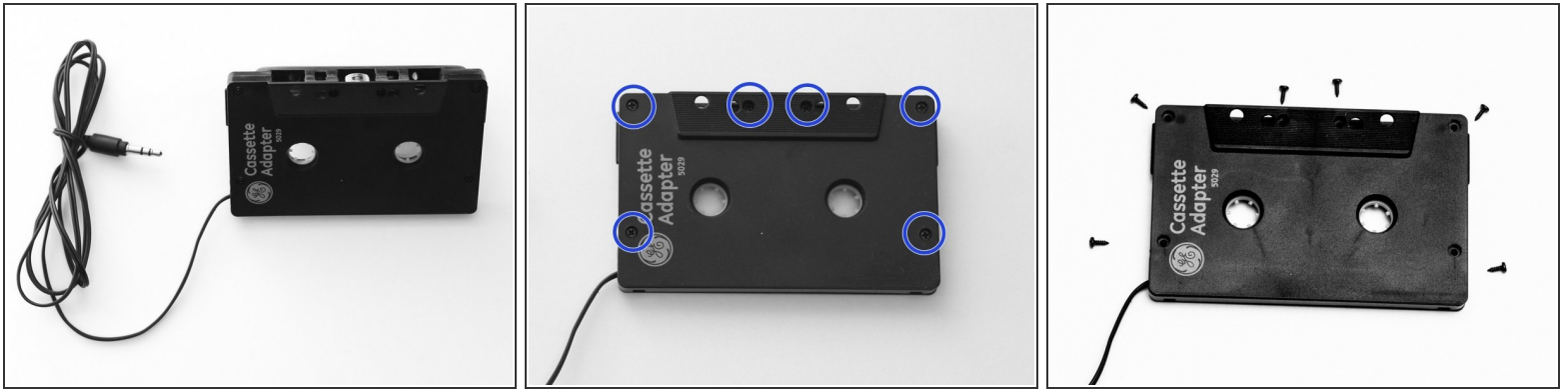
You recently bought a cassette-to-aux adaptor at a local drug store so you can play music from your MP3 player in your older car. However, when you insert the cassette into the older car's cassette player, the cassette player flips the cassette continuously. This guide will show you the steps to fixing the auto flip problem.

Photo credit: Alexander Bohlen Photography

TOOLS:

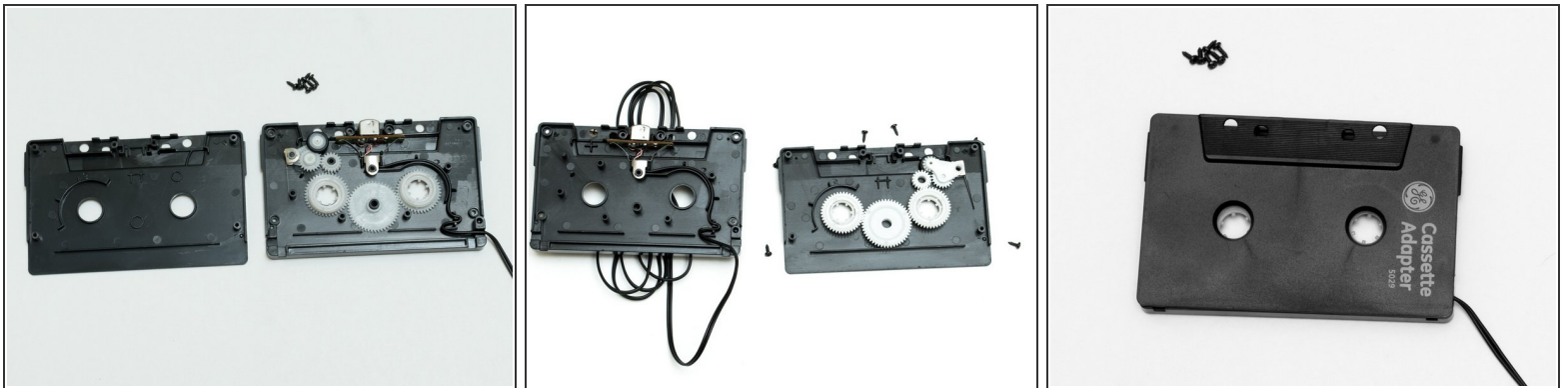
- [Phillips #00 Screwdriver](#) (1)
 - [Tweezers](#) (1)
Optional
 - [Scotch tape](#) (1)
Optional
 - [Magnetic Project Mat](#) (1)
Optional
 - [camera](#) (1)
Optional
-

Step 1 — Fixing the Automatic Reverse Flipping of a Cassette-to-Aux Adaptor



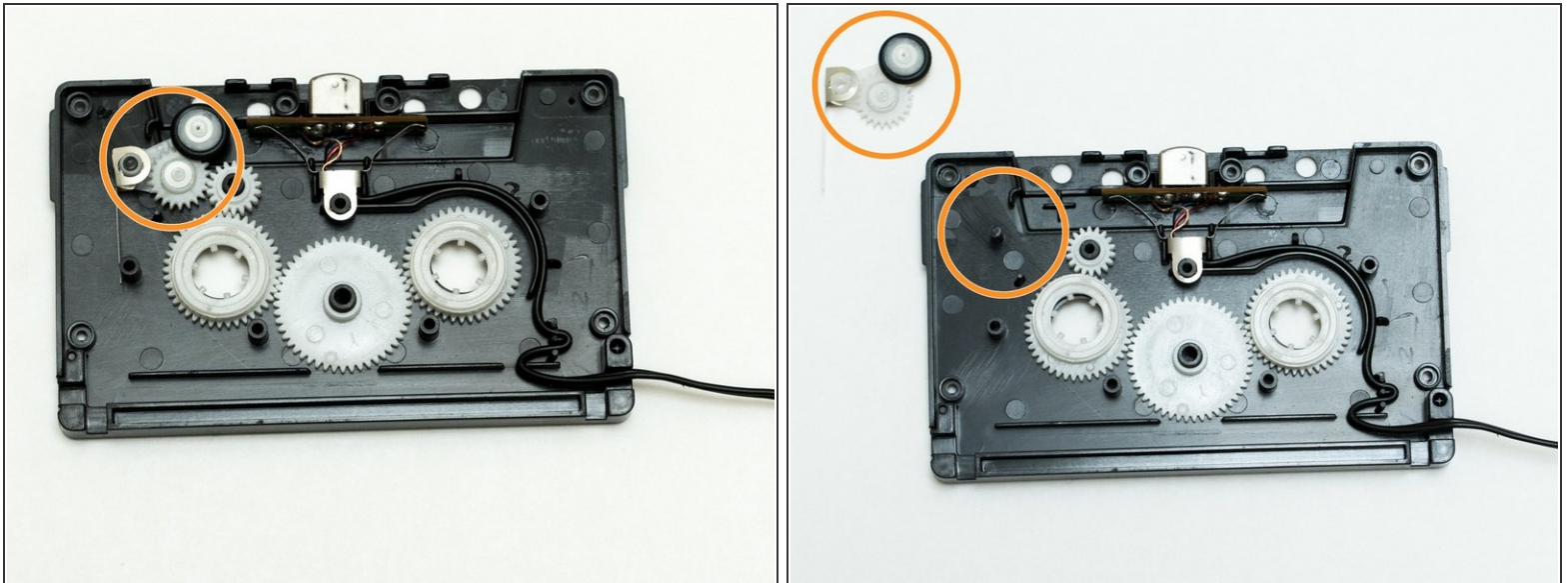
- Unscrew all the screws around the cassette tape box.
- ⚠ Place screws somewhere safe so you do not lose them.
- ⓘ Models, screw locations, and screw sizes may vary.

Step 2



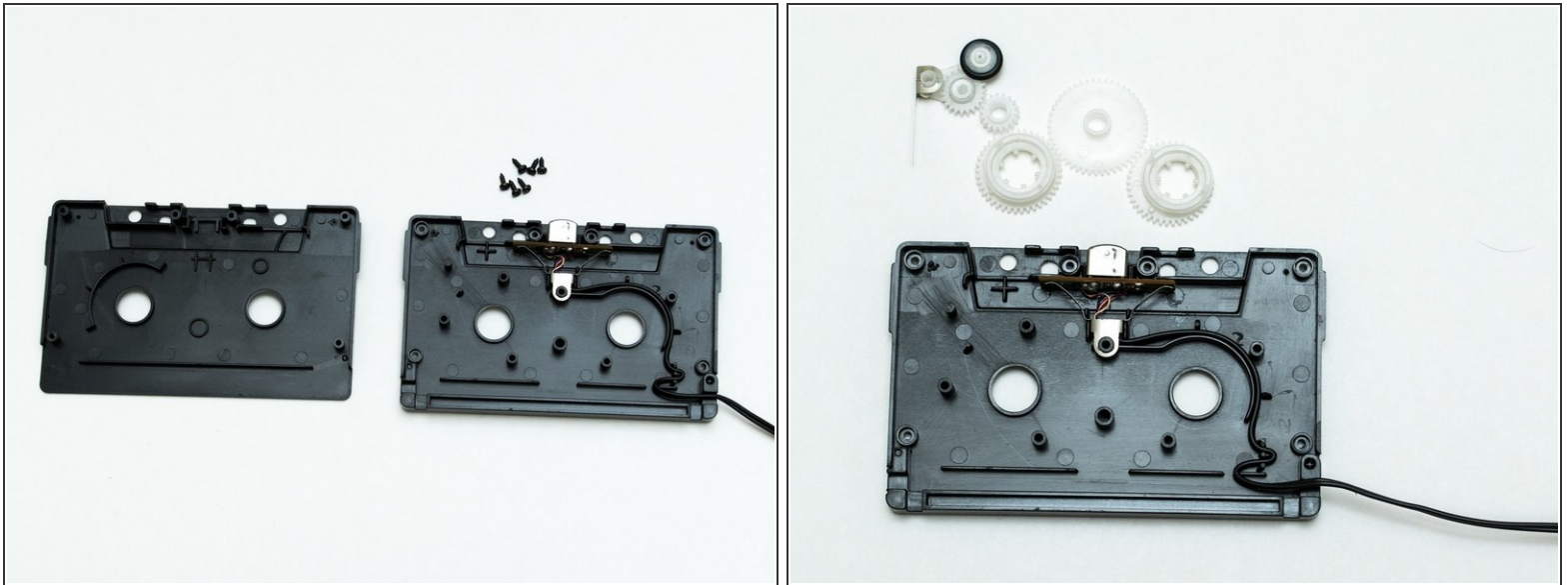
- Slowly remove the cover of the cassette box.
- ☑ Take a photo of the insides of the cassette box so it can guide when you are reassembling the cassette box.
- Do not worry if you open the cassette box upside down (shown in 2nd photo) it is easy to correct; simply put the case back on, flip it over (shown in 3rd photo) and pull the new front side off (1st photo again).

Step 3



- Remove the auto flip mechanism located on the top corner.
 - ⚠ Do not throw this away; you may have to reinstall it if you want to use a different cassette player.

Step 4



- Make sure all electrical circuitry and gears that were not removed are in their correct location.
- ⓘ Any other gears inside the cassette box, really aren't necessary. So feel free to remove them if the cassette is making too much noise (shown in 2nd photo).
- ⓘ Edit 3/14/2019: All cars are different. Many people in the comments have had luck keeping the center gears in the cassette and removing the interface gears. And also vice versa. Play around with it! If you can get it to work, awesome! If not, then try something else. Don't give up until you have your music playing in your car! Cheers!

To reassemble your device, follow these instructions in reverse order, but do not replace the gears you removed.