



iPod 3rd Generation Rear Panel Replacement

Written By: iRobot



INTRODUCTION

The shiny rear half of your iPod case.



TOOLS:

- [iFixit Opening Tools](#) (1)
- [Phillips #00 Screwdriver](#) (1)
- [Spudger](#) (1)



PARTS:

- [iPod 3G Thick Rear Panel](#) (1)
- [iPod 3G Thin Rear Panel](#) (1)

Step 1 — Case



- Before opening your iPod, ensure that the hold switch is in the locked position. The orange bar should be visible, indicating hold is active.

Step 2



- Insert an opening pick as far as possible into the seam between the plastic front and the metal rear panel, on the right edge of the iPod.
 - ⓘ You may need to rock the pick back and forth to slide it in farther.
- Use the opening pick to pry up against the plastic front panel and release five retaining tabs (seen in the third photo).
- Slide the pick along the edge of the iPod and continue prying to release the rest of the retaining tabs.
- After all five tabs along the right side are free, the case should open easily.

Step 3



- i The iPod case is now open, but don't separate the two halves just yet. There is still an orange ribbon cable connecting the headphone jack to the logic board.
- Open the case like a book with the dock connector at the top, and lay the rear panel next to the front half of the iPod.

Step 4



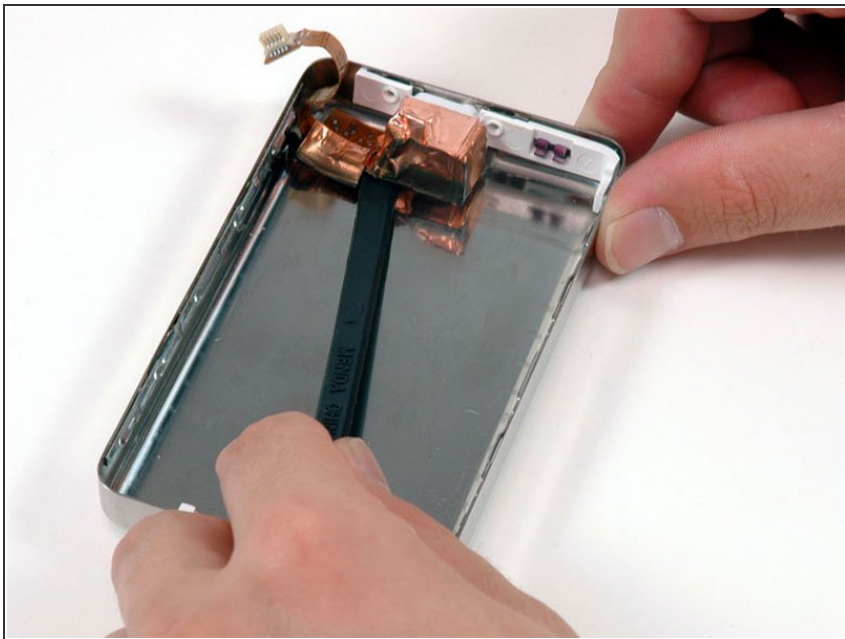
- Use a plastic tool or your fingernails to carefully disconnect the orange headphone jack cable. Be sure to pull straight up on the connector, not the cable itself.
- ⚠ The headphone jack connector is unusually tall. When prying, be careful to not separate the lower, plastic part of the connector from the ribbon cable. Pry between the connector and the socket, not between the two halves of the connector.

Step 5 — Headphone Jack



- Remove the 3 silver Philips screws securing the headphone jack to the rear panel.

Step 6



- Slide a spudger beneath the orange headphone jack cable and use it to pry the cable up from the rear panel.

Step 7



- Grasp the headphone jack board and lift it out of the iPod.
- ⓘ When reassembling your iPod, be sure that the plastic hold switch mechanism is synced with the hold switch on the logic board. The switch on the board is a small black nub that sits in the slot on the hold switch mechanism.

Step 8 — Rear Panel



- Rear panel remains.

To reassemble your device, follow these instructions in reverse order.