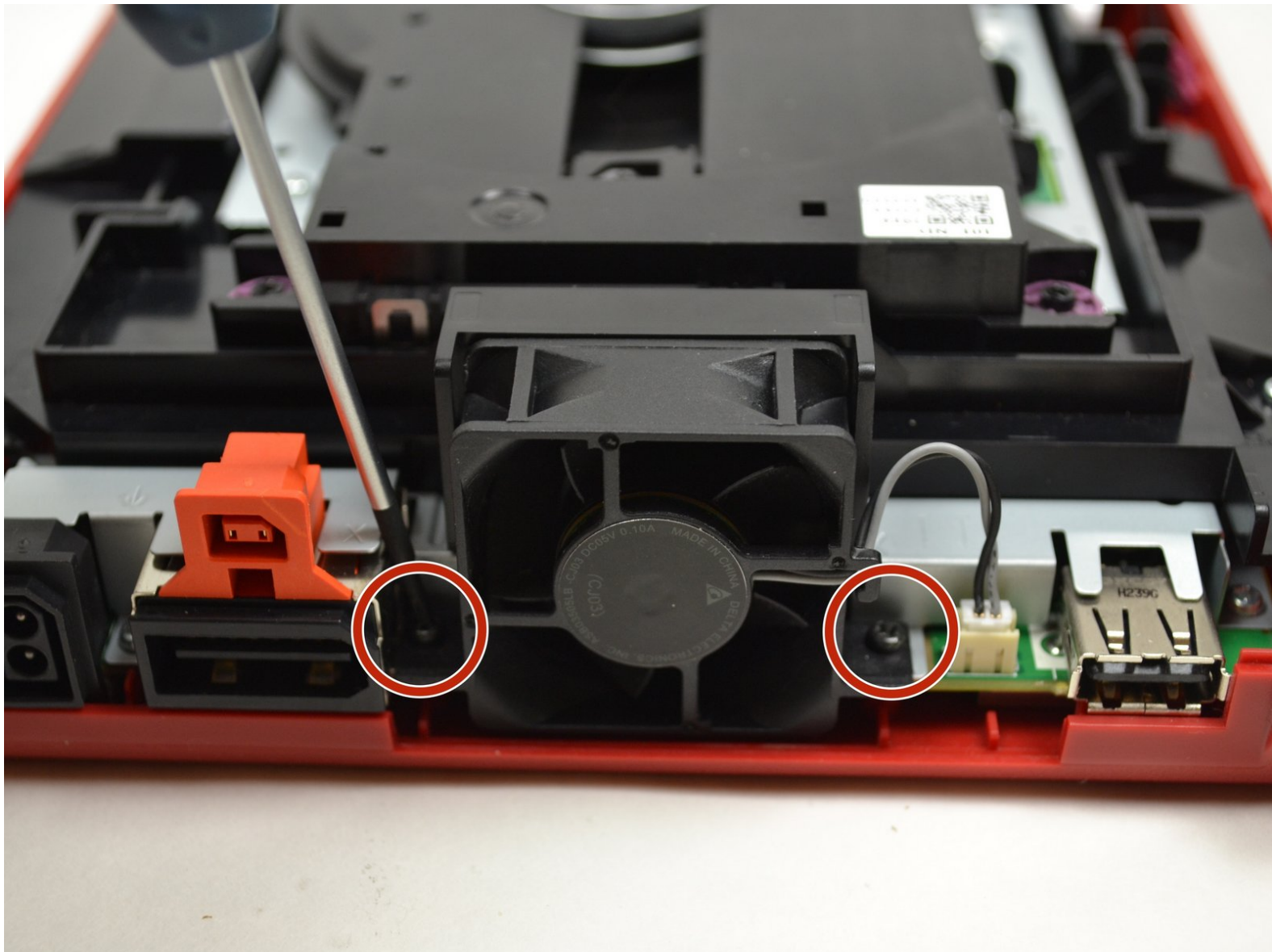




# Nintendo Wii mini Fan Replacement

Replace a broken or worn out fan on your Nintendo Wii mini.

Written By: Kristin Anderson



## INTRODUCTION

Use this guide to replace the fan on your Nintendo Wii mini.



### TOOLS:

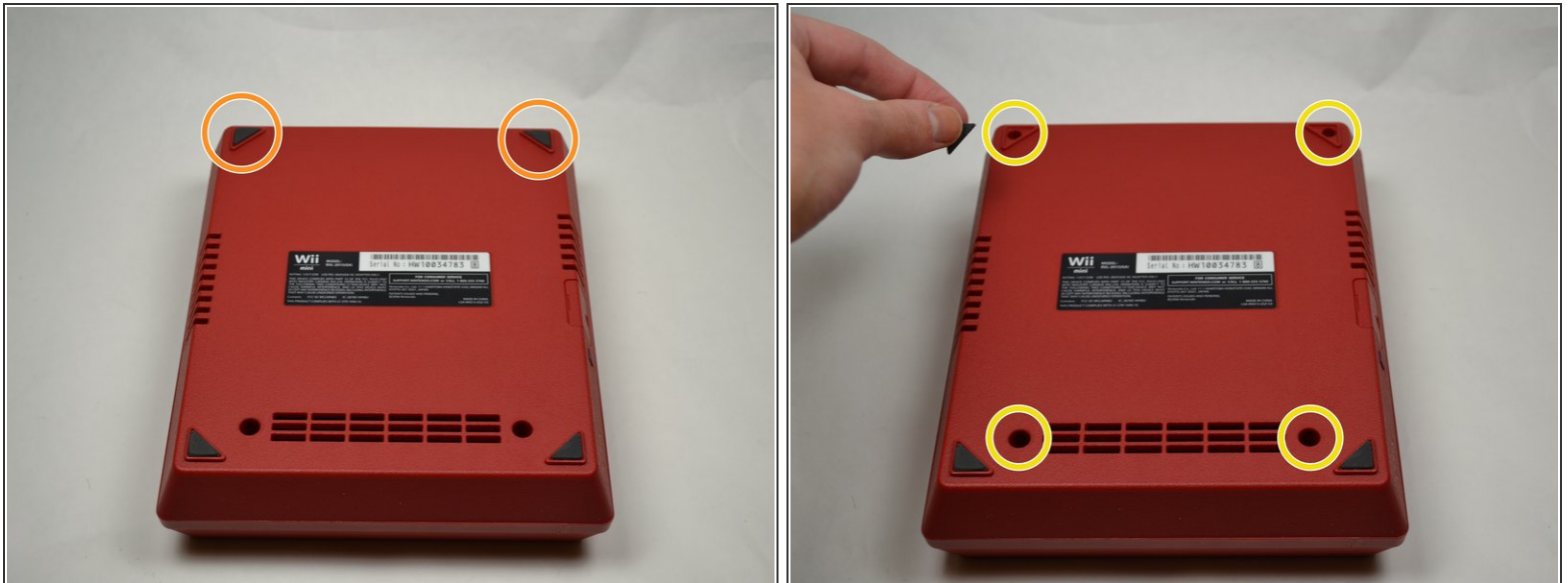
- [Phillips #0 Screwdriver](#) (1)
- [iFixit Opening Tools](#) (1)
- [Tweezers](#) (1)



### PARTS:

- [Nintendo Wii mini Fan](#) (1)

## Step 1 — Upper Case



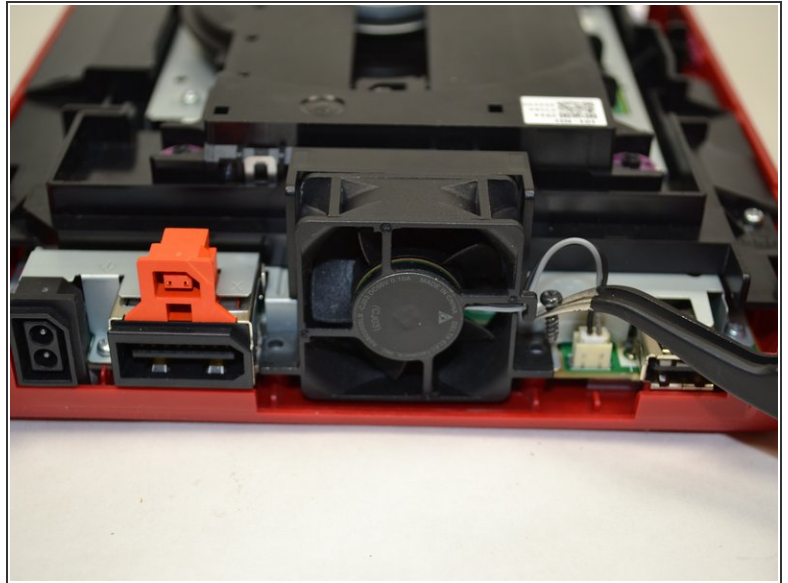
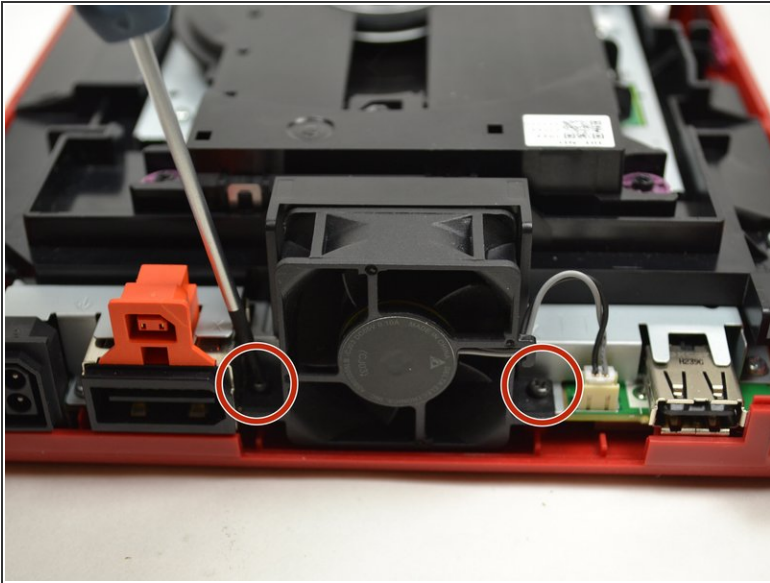
- Turn the Wii mini upside down.
- Remove the two rubber feet at the back of the console to reveal the hidden screws.
- Remove the four 6mm Phillips #0 screws.

## Step 2



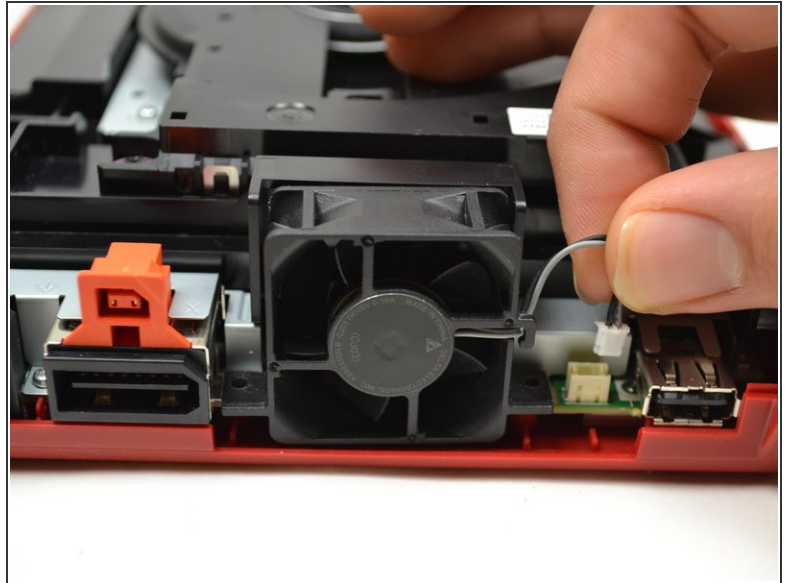
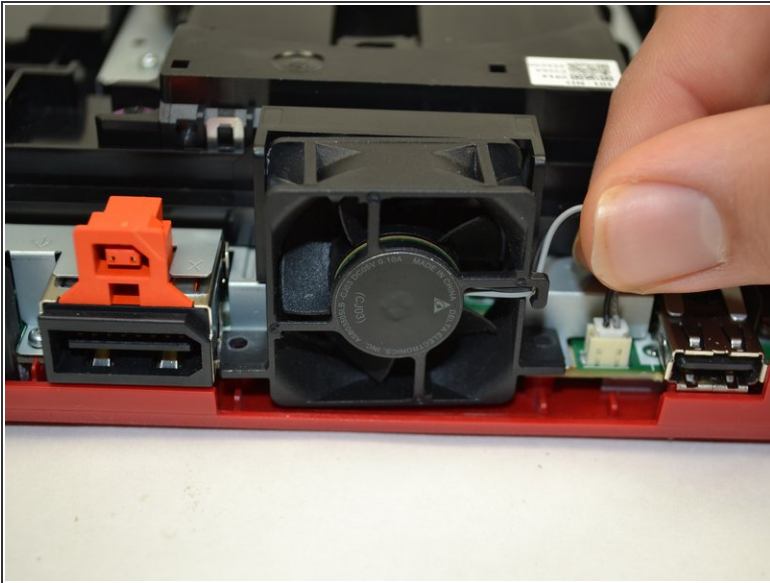
- Turn the Wii mini right-side up.
- Run a plastic opening tool around the middle edge of the console to loosen the top piece.
- Gently lift the top piece of the console and set it aside.

### Step 3 — Fan



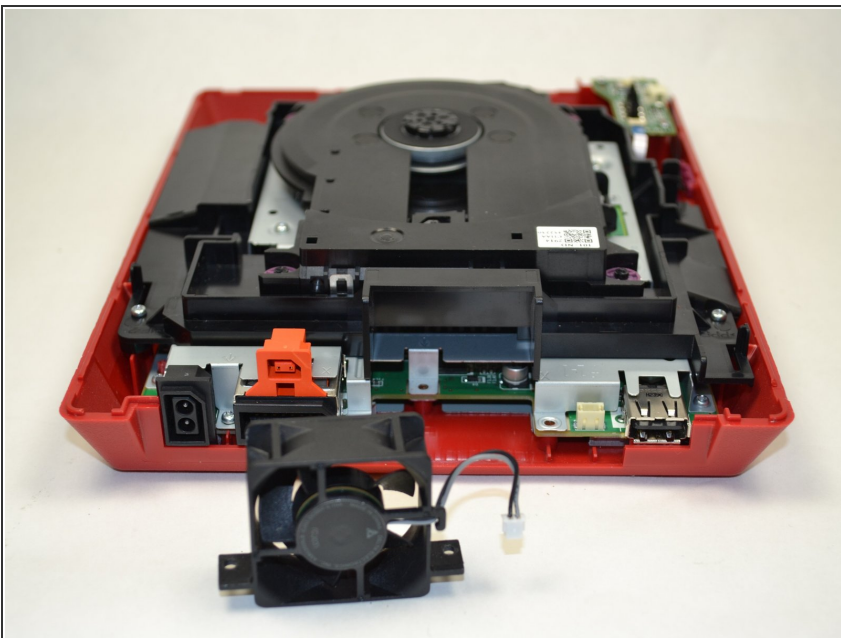
- Turn the Wii mini around so that the back of the device is facing you.
- Using a Phillips #0 Screwdriver, unscrew the two 6mm screws on either side of the fan piece.
- ⓘ You may need to use tweezers to pull out the screws once they are loosened.

## Step 4



- Using your fingers, gently pull the top of the pin connector straight up to detach the fan from the console.

## Step 5



- Remove the fan piece and set it aside.

To reassemble your device, follow these instructions in reverse order.

This document was generated on 2020-11-18 05:12:27 PM (MST).

