



# iPad Air LTE SIM Tray Replacement

Remove or replace the SIM tray (including the SIM card) on your iPad Air LTE.

Written By: Andrew Optimus Goldheart



## INTRODUCTION

Use this guide to eject the SIM tray on your iPad Air LTE, either to perform a repair or to replace the SIM card.

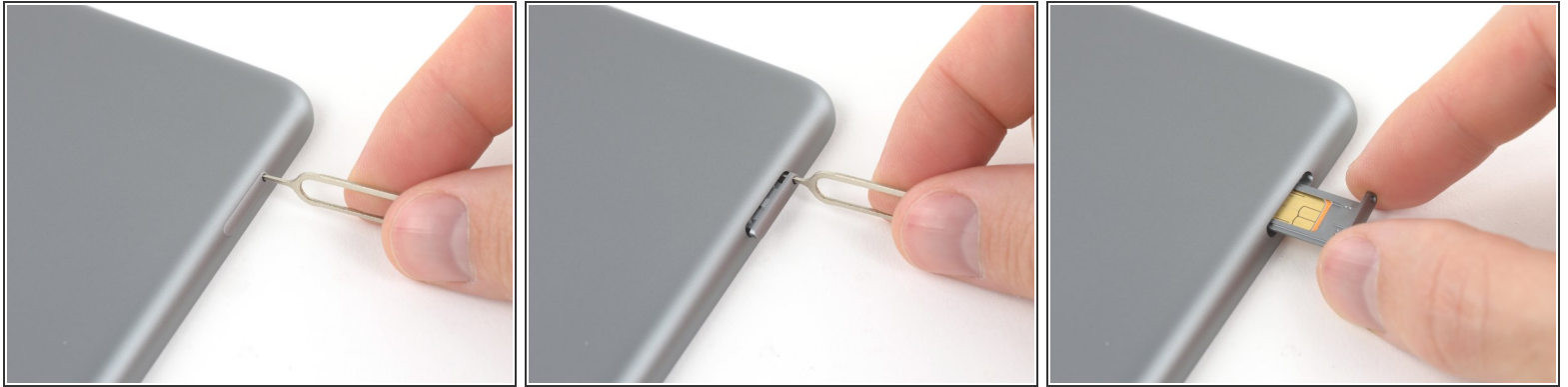
### TOOLS:

- [SIM Card Eject Tool](#) (1)

### PARTS:

- [iPad Air SIM Card Tray](#) (1)

## Step 1 — SIM Tray



- Use a SIM eject tool or an uncoiled paperclip to eject the SIM tray.
- Push the tool into the hole next to the SIM tray until it pushes the tray out enough to grab.
- Pull out and remove the tray.

To reassemble your device, follow these instructions in reverse order.