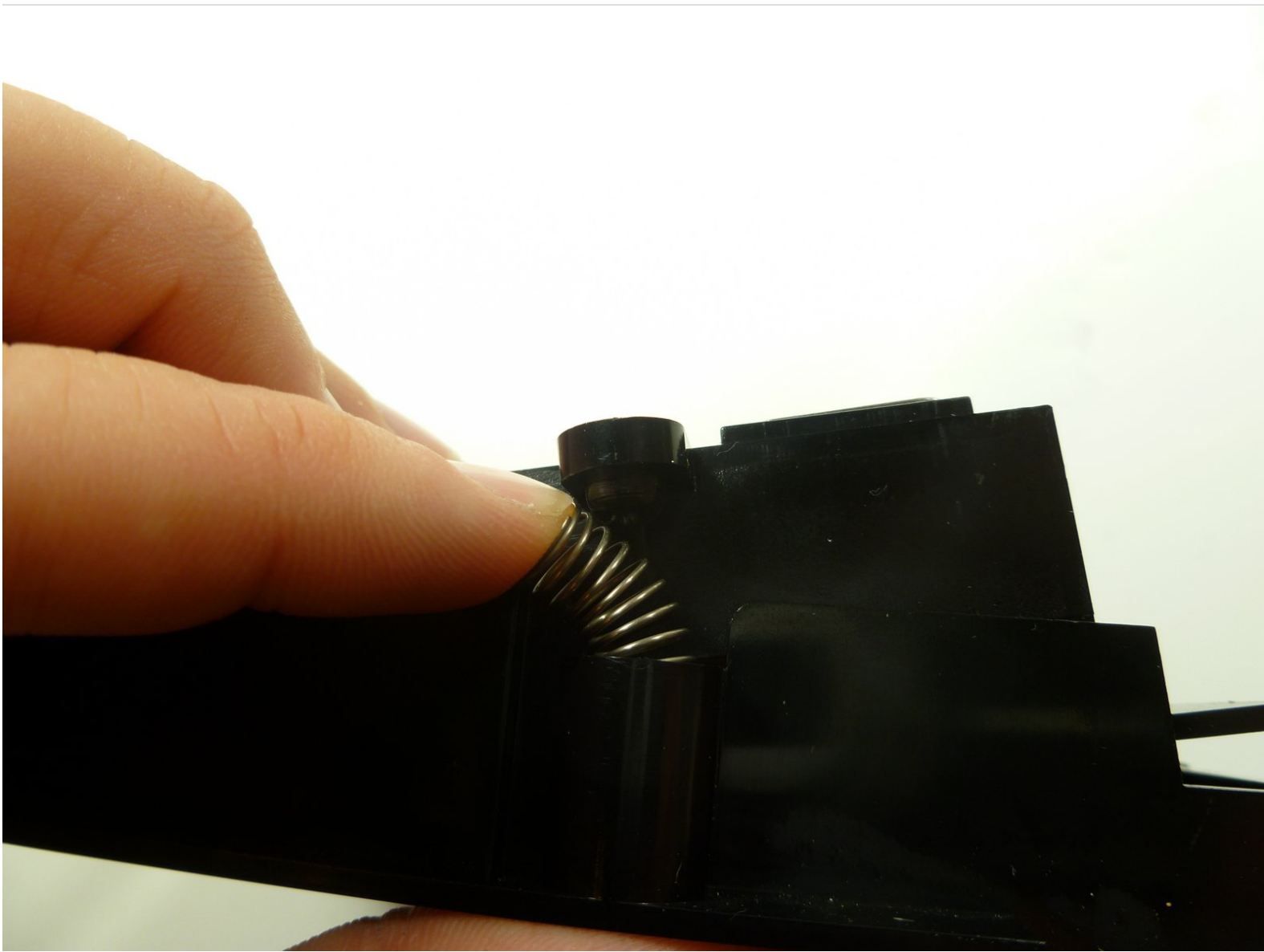




Nintendo Entertainment System Springs Not Properly Mounted on Cartridge Tray Replacement

The springs are not properly mounted to the cartridge tray so the game does not eject.

Written By: nicholasweiser



INTRODUCTION

If the springs work properly but are not properly mounted to the cartridge tray, follow these instructions.

TOOLS:

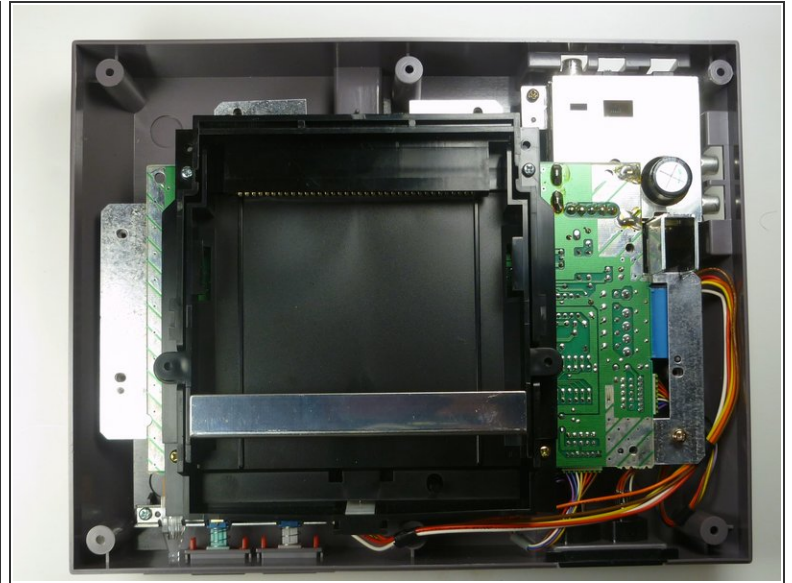
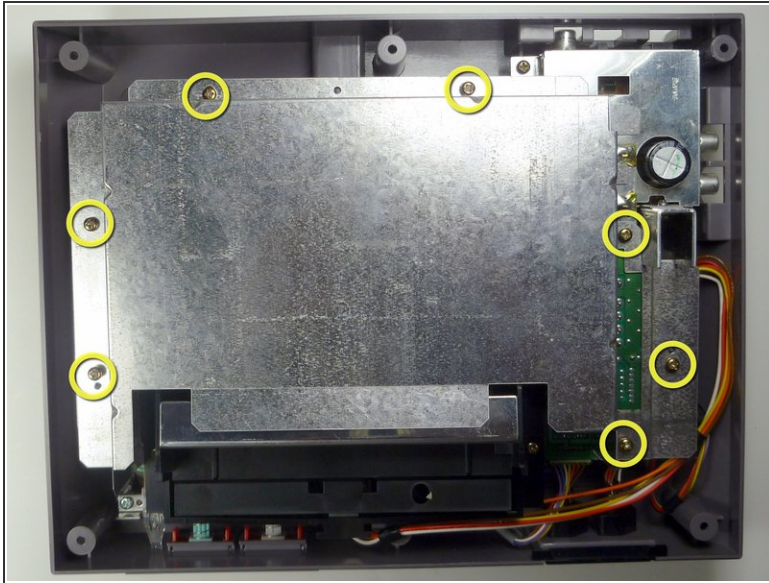
- Flathead 3/32" or 2.5 mm Screwdriver (1)
 - Phillips #2 Screwdriver (1)
-

Step 1 — Game Cartridge Tray



- Remove the six 13.25mm Phillips screws on the bottom of the game console with a #2.5 flathead screwdriver.
- ⓘ The screws are recessed about 40 mm.
- Flip the game console right side up and take off the top by pulling it up and away from the rest of the device with your hands.

Step 2



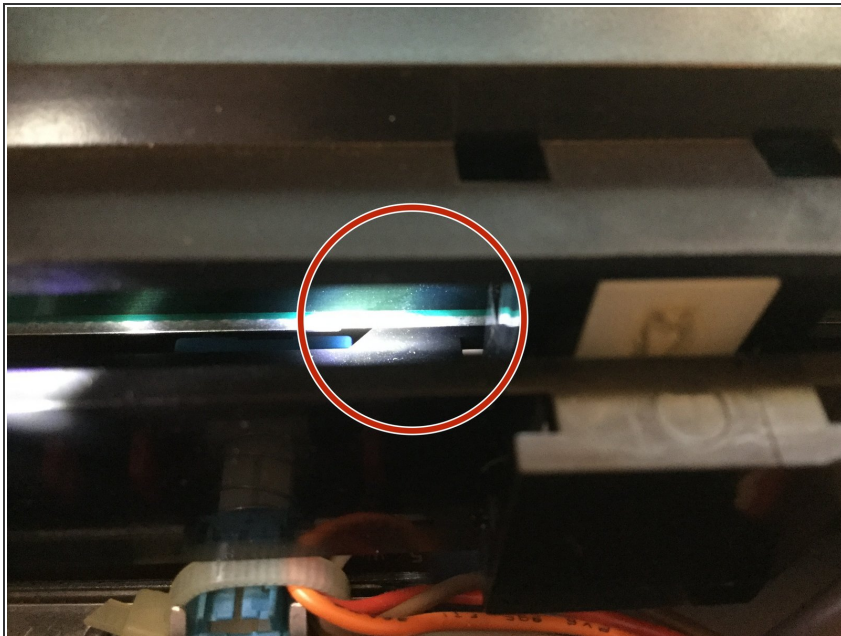
- Remove the seven 13.25mm Phillips screws from the metal cover with a Phillips head #2 screwdriver.
- Remove the metal cover by pulling it up and away from the rest of the console with your hands.

Step 3



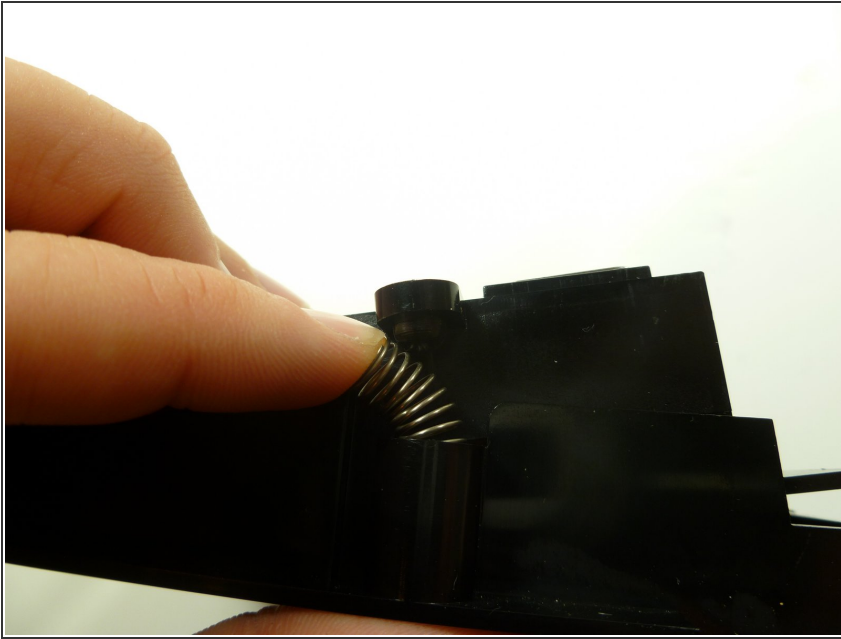
- Remove the two silver 17.45mm Phillips screws from the cartridge tray using a Phillips head #2 screwdriver.
- Remove the two bronze 13.25mm Phillips screws from the cartridge tray using a Phillips head #2 screwdriver.
- Slide the cartridge tray toward you, away from the 72-PIN connector, and off the motherboard assembly.

Step 4



- Underneath the cartridge tray is a black tab/lip (see marker).
- ⚠ Make sure you orient this tab underneath the motherboard in addition to orienting the tray on top. Failure to do so will bow the cartridge tray and place stress on the component.

Step 5 — Springs Not Properly Mounted on Cartridge Tray



- Use your fingernail to squeeze down on one side of the spring and reposition the spring back on to the plastic nipple attached to the smaller part of the game cartridge frame.

To reassemble your device, follow these instructions in reverse order.